



# Blue Line Corporation

## American Gulf Coast Regional Workshop on Critical Minerals Sustainability

January 19, 2021

# Blue Line History and Facilities

Founded in 2001  
In San Antonio, Texas  
54,000 square feet on 3.5 acres  
Corporate Office, Processing, Storage, Laboratories



# Our Facilities – Hondo



## Hondo, TX

560,000 square feet on 142 acres  
Processing, Storage

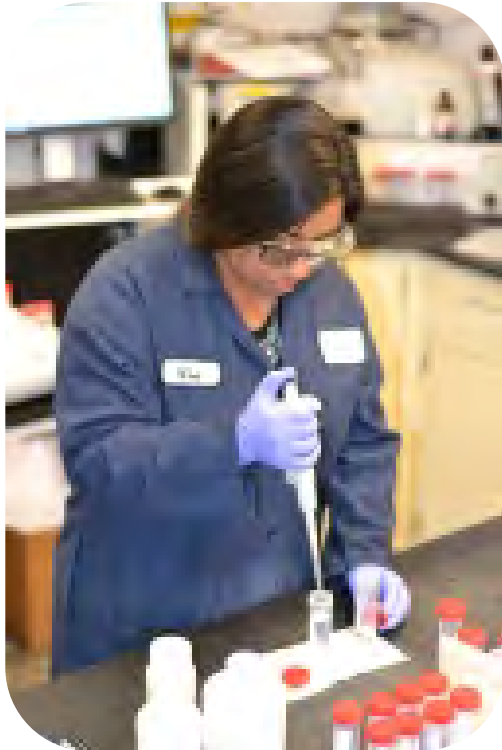




# Manufacturing Capabilities



# Analytical Laboratory

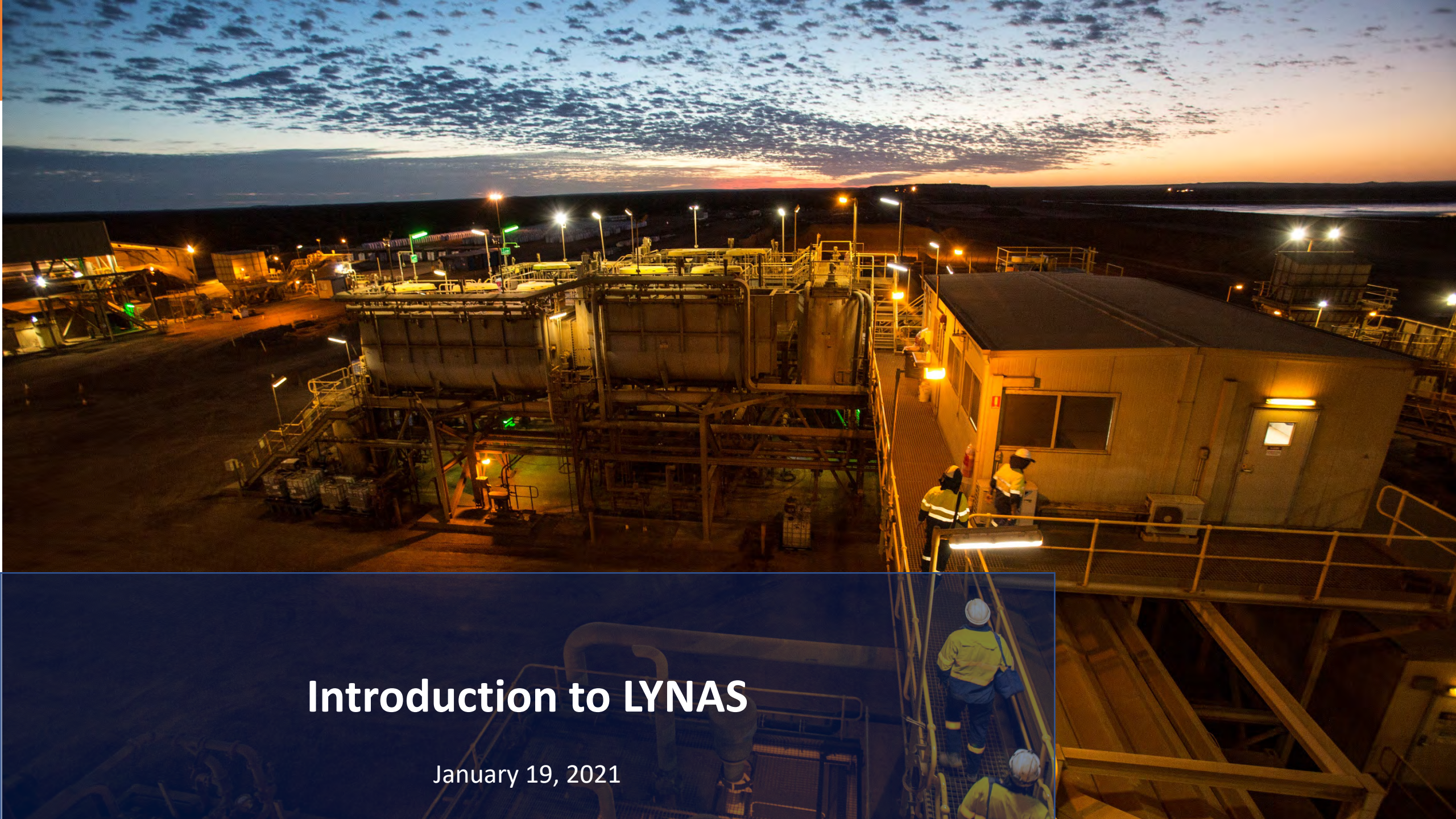


# Markets served by Blue Line

---

- Catalyst Industries
  - Petroleum
  - Polymer
  - Automotive
  - Plastic film (to promote biodegradation)
- Coatings
  - Glass
  - Thermal Spray
- Ceramics and Glass Additives
- Nuclear
- Water Treatment
  - Phosphate removal
  - Metals removal from industrial and municipal water
- Electronics
- Nano powder precursors
- Energy storage
- Cross Linking agent
  - Oil Field
  - Paper coatings





# Introduction to LYNAS

January 19, 2021



# Disclaimer

This Presentation has been prepared by Lynas Corporation Limited (ABN 27 009 066 648) (Lynas or the Company) This Presentation contains summary information about Lynas and its subsidiaries (Lynas Group) and their activities current as at the date of this Presentation. The information in this Presentation is of general background and does not purport to be complete or to comprise all the information that a shareholder or potential investor in Lynas may require in order to determine whether to deal in Lynas shares. It should be read in conjunction with Lynas Group's other periodic and continuous disclosure announcements lodged with the Australian Securities Exchange (ASX), which are available at [www.asx.com.au](http://www.asx.com.au). This document is not a prospectus or a product disclosure statement under the Corporations Act (Cth) 2001 (Corporations Act) and has not been lodged with ASIC.

## **Not investment or financial product advice**

This Presentation is for information purposes only and is not financial product or investment advice or a recommendation to acquire Lynas shares and has been prepared without taking into account the objectives, financial situation or needs of individuals. Before making an investment decision, prospective investors should consider the appropriateness of the information having regard to their own objectives, financial situation and needs and seek financial, legal and taxation advice appropriate to their jurisdiction. Lynas is not licensed to provide financial product advice in respect of Lynas shares. Cooling off rights do not apply to the acquisition of Lynas shares.

## **Financial data**

All dollar values are in Australian dollars (A\$) unless stated otherwise and financial data is presented within the financial year end of 30 June 2019 unless stated otherwise. Any pro forma historical financial information included in this Presentation does not purport to be in compliance with Article 11 of Regulation S-X of the rules and regulations of the US Securities and Exchange Commission.

## **Future performance**

Past performance information given in this Presentation is given for illustrative purposes only and should not be relied upon as (and is not) an indication of future performance. This Presentation contains certain "forward-looking statements". The words "expect", "should", "could", "may", "will", "predict", "plan", "scenario", "forecasts", "anticipates" "estimates" and other similar expressions are intended to identify

forward-looking statements. Indications of, and guidance on, future earnings and financial position and performance are also forward-looking statements. Forward-looking statements, opinions and estimates provided in this Presentation are based on assumptions and contingencies which are subject to change without notice, as are statements about market and industry trends, which are based on interpretations of current market conditions. Such forward-looking statements including projections, guidance on future earnings and estimates are provided as a general guide only and should not be relied upon as an indication or guarantee of future performance. There can be no assurance that actual outcomes will not differ materially from these forward-looking statements.

## **Investment Risk and other risks**

An investment in Lynas shares is subject to investment and other known and unknown risks, some of which are beyond the control of Lynas Group, including risk factors associated with the industry in which Lynas Group operates, such as: nature of mineral exploration and production; mineral and ore reserves; operations risks; project development risks; market price and demand risk; credit and market risks; regulatory, political and environmental risks; tax and other risks generally relating to equity investment.

## **Not an offer**

This Presentation does not constitute an offer to sell, or the solicitation of an offer to buy, any securities in the United States. Any securities described in this Presentation have not been, and will not be, registered under the U.S. Securities Act of 1933 (the "Securities Act").

## **Disclaimer**

Lynas and its affiliates, officers, employees, agents and advisers have not authorised, permitted or caused the issue, dispatch or provision of this Presentation to any third party. Lynas, its related bodies corporate and their respective affiliates, officers, employees, agents and advisers to the maximum extent permitted by law, expressly disclaim all liabilities in respect of any expenses, losses, damages or costs incurred by you as a result of the information in this Presentation being inaccurate or due to information being omitted from this Presentation, whether by way of negligence or otherwise, and make no representation or warranty, express or implied, as to the fairness, currency, accuracy, reliability or completeness of information. The information in this Presentation remains subject to change without notice.





Mt Weld is favoured by grade, NdPr content, total REO and life of mine



The world's largest, most modern RE plant designed on best practice sustainability principles





# Sustainability is an essential business primary attribute when serving Green industries (EV, Wind)

- **Lynas offers:**
  - Unique market expertise inside and outside China
  - Independence from geo-politics
  - Transparent downstream supply chain
  - Can provide metal, alloy and recycling services through trusted partners in addition to Rare Earth supply
  - Full transparency of transactions
  - Traceability from mine to magnet
- **Recognized environmental performance:**
  - NIOSH Gold award for Occupational Health and Safety
  - Gold medallist with Together For Sustainability
  - United Nation Global Compact Signatory
  - Life Cycle Assessment shared and communicated



# Progress on key Lynas 2025 projects



**Mt Weld, WA: Production ramp up to meet forecast demand growth**



**Kalgoorlie, WA: Building a new Rare Earth Processing Facility**



**Malaysia: Investing in increased downstream processing, product range, recycling**



**United States: Filling a market gap with new separation and product finishing capability**

## Recent Progress



- Increasing Dysprosium (Dy) and Terbium (Tb) content of SEG by blending Duncan ore into the feed
- Optimising circuit changes
  - Pre-leach to reduce carbonate levels in concentrate
  - Kiln drying of concentrate



- Planned Kalgoorlie Rare Earth Processing Facility awarded Major Project status by the Australian Government & Lead Agency status by the WA Government
- Set to create 500 jobs during construction and 100 new ongoing jobs
- Longest lead item (kiln) contract awarded July 2020
- Sub-lease for Kalgoorlie site signed 21 August 2020



- La and Ce quality improvements for higher value products
- Scale benefits and cost efficiencies delivered by the Lynas NEXT initiative provide production flexibility to ramp up/down in line with demand



- Phase I contract signed with U.S. Department of Defense in July 2020 for completion of a detailed market study, and planning and design work for a U.S. Heavy Rare Earths separation facility



# What is our plan in Hondo, Texas

**Blue Line Corporation is working in conjunction with Lynas to build a world class rare earth separation and processing facility in Hondo Texas, which in turn will begin to loosen China's monopoly on raw material supply and help the United States decrease its dependency on China for manufactured items**

**Our plan includes 2 major projects:**

- 1. Providing to a future US based magnet maker the ideal raw material environment required, including:**
  - a. HRE – Heavy rare earth separation (currently exclusively done in China)**
  - b. LRE – Light Rare Earth separation – currently dominated by China ~75% where Lynas processes ~20%**
  - c. Recycling of RE magnet by-product and end of life magnets, to support sustainable and competitive growth for a U.S. based magnet maker.**
- 2. Further developing an integrated Specialty products manufacturing base supporting the US electronic and catalytic U.S. downstream market**



# Thank you

If you have any questions, please contact

Jon Blumenthal

President & CEO

Email: [jon@bluelinecorp.com](mailto:jon@bluelinecorp.com)