



JULY 18, 2022

WELCOME TO ARGONNE

DR. SURESH SUNDERRAJAN
Associate Laboratory Director
Advanced Energy Technologies
Argonne National Laboratory



Argonne National Laboratory is a
U.S. Department of Energy laboratory
managed by UChicago Argonne, LLC.



A PROUD HISTORY

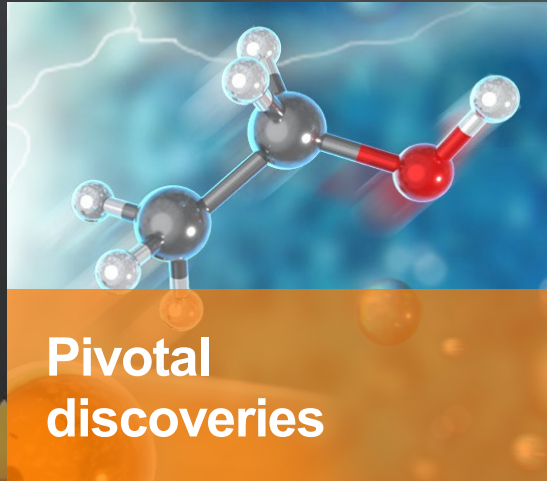
MAN ACHIEVED HERE
THE FIRST SELF-SUSTAINING CHAIN REACTION
AND THEREBY INITIATED THE
CONTROLLED RELEASE OF NUCLEAR ENERGY



Argonne was established in 1946 as a science and technology laboratory to develop peaceful uses for a revolutionary new source of energy: **nuclear power.**

Argonne accelerates science and technology for U.S. prosperity and security

Diversified research portfolio - ~\$1.1 Billion in FY2021



ARGONNE'S RESEARCHERS AND DISCOVERIES ARE WIDELY RECOGNIZED

~130

R&D 100
Awards

700+

National and
international awards
and honors

1,000s

Inventions recorded
and
patents issued

6
In 2020

Numerous DOE
commendations,
including Secretary's
Awards

Nobel
Laureates



1938
Enrico
Fermi



1963
Maria
Goeppert Mayer



2003
Alexei
Abrikosov



U.S. DEPARTMENT OF
ENERGY

Argonne National Laboratory is a
U.S. Department of Energy laboratory
managed by UChicago Argonne, LLC.

Argonne
NATIONAL LABORATORY

ONE-OF-A-KIND SCIENTIFIC FACILITIES

Enabling science from nanoscale to exascale

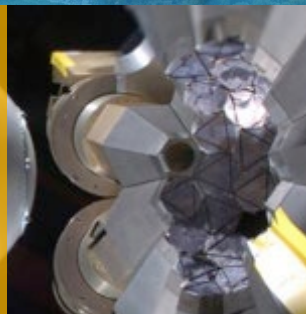
Advanced
Photon
Source

APS



Argonne
Tandem
Linear
Accelerator
System

ATLAS



Argonne
Leadership
Computing
Facility

ALCF



Center for
Nanoscale
Materials

CNM



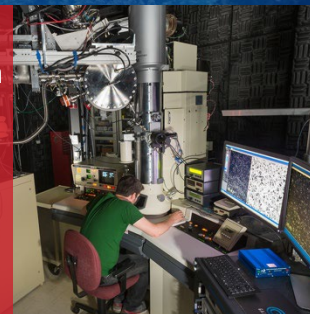
Atmospheric
Radiation
Measurement –
The Southern
Great Plains

ARM



Intermediate
Voltage Electron
Microscopy-
Tandem
Facility

IVEM



U.S. DEPARTMENT OF
ENERGY

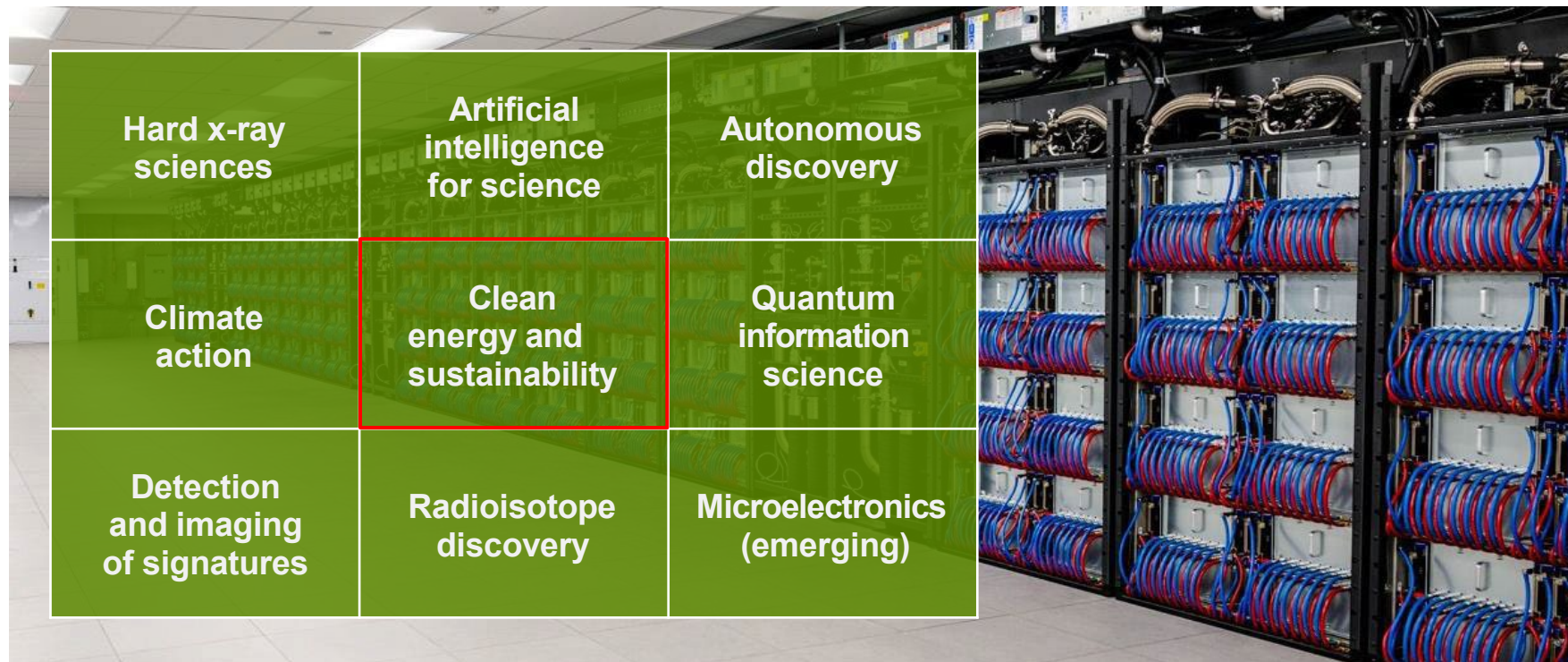
Argonne National Laboratory is a
U.S. Department of Energy laboratory
managed by UChicago Argonne, LLC

Argonne
NATIONAL LABORATORY

75
1946-2021

STRATEGIC INITIATIVES

FY2022 Annual Laboratory Plan



SUPPLY CHAIN S&T

- Seeking replacements for scarce, expensive elements
- Developing materials for a circular economy
- Strengthening domestic supply chain
- Commercializing new materials and processes

Modeling and Analysis Tools

- Lifecycle and technoeconomic analysis
- Supply chain dynamics: consequence and risk management from mining to recycling
- Supply chain design and optimization

Facilities

- ReCell Center
- Materials Engineering Research Facility



ARGONNE'S WORK PROMOTES U.S. PROSPERITY AND SECURITY