

Satellite Observations of Air Pollutant Emissions in the US

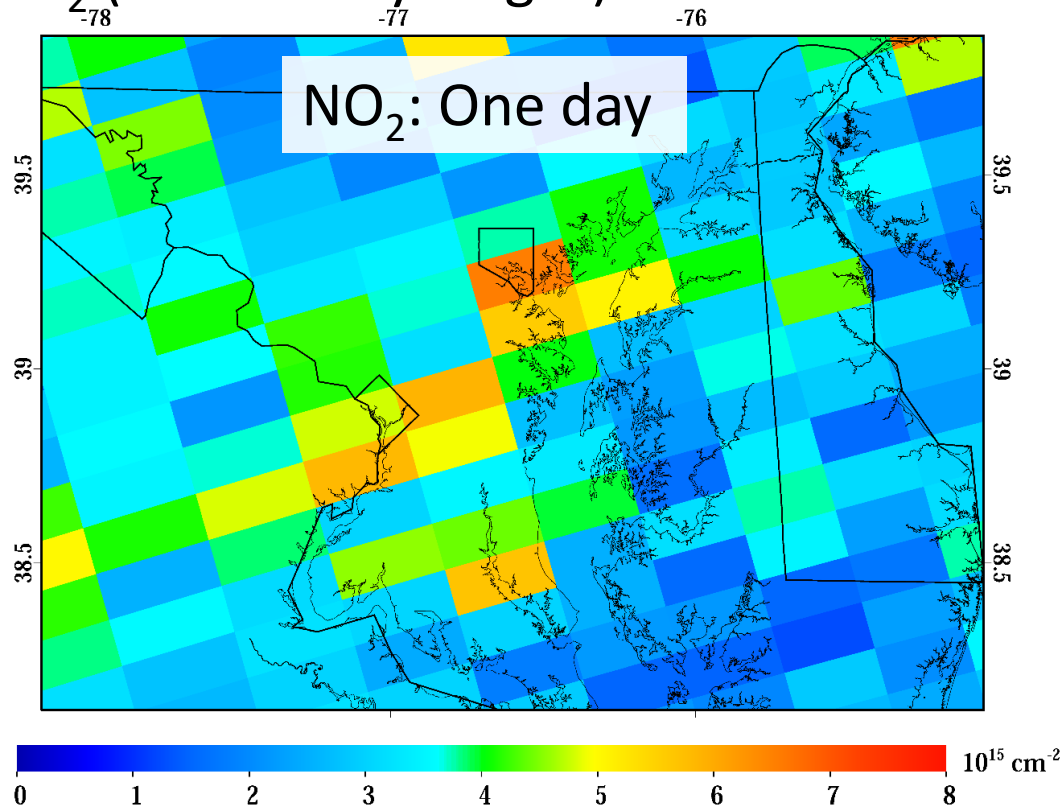
Dr. Daniel Goldberg, Dr. Zifeng Lu,
and Dr. David Streets

Energy Systems Division
Argonne National Laboratory
July 12th, 2018

*Prepared for the Workshop on Big Data and Machine Learning for
the Office of Clean Coal and Carbon Management*

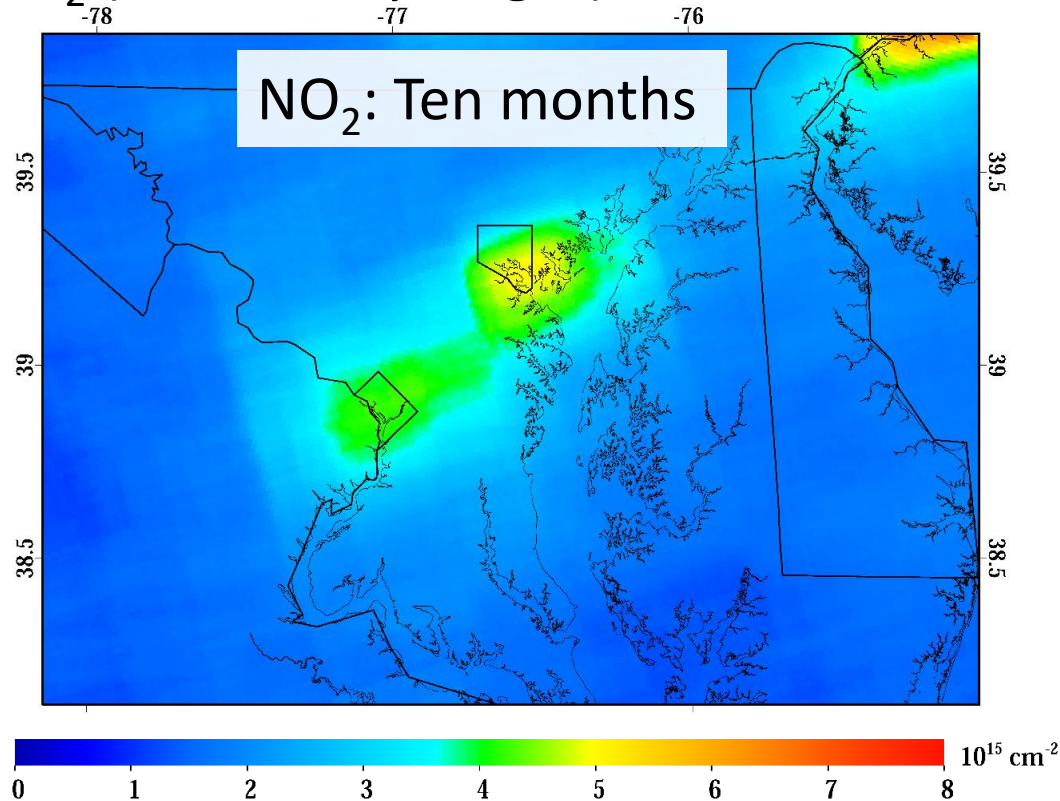
Which pollutants be seen from satellite and what does it look like?

- Air pollutants that can be seen from satellite include:
NO_x (as NO₂), SO₂, O₃, CO, Formaldehyde, Particulates
- Greenhouse gases that can be seen from satellite include:
CH₄ and CO₂ (in the early stages)



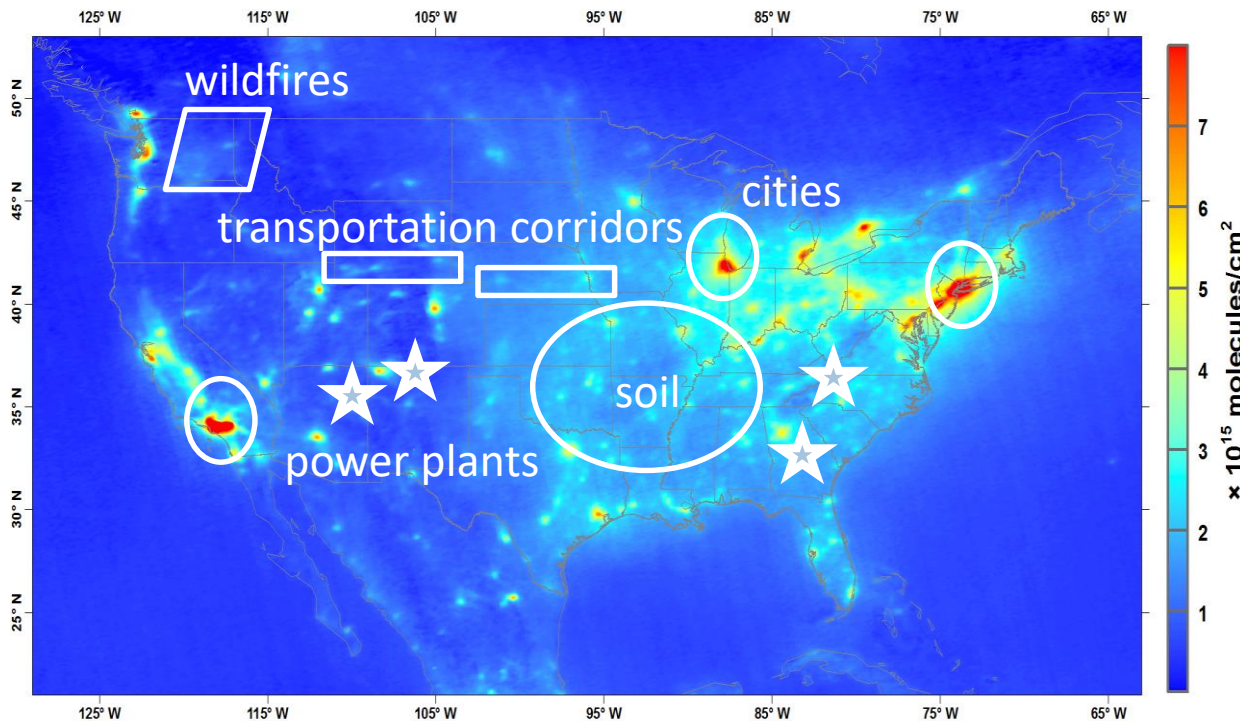
Which pollutants be seen from satellite and what does it look like?

- Air pollutants that can be seen from satellite include:
NO_x (as NO₂), SO₂, O₃, CO, Formaldehyde, Aerosols
- Greenhouse gases that can be seen from satellite include:
CH₄ and CO₂ (in the early stages)



Which pollutants be seen from satellite and what does it look like?

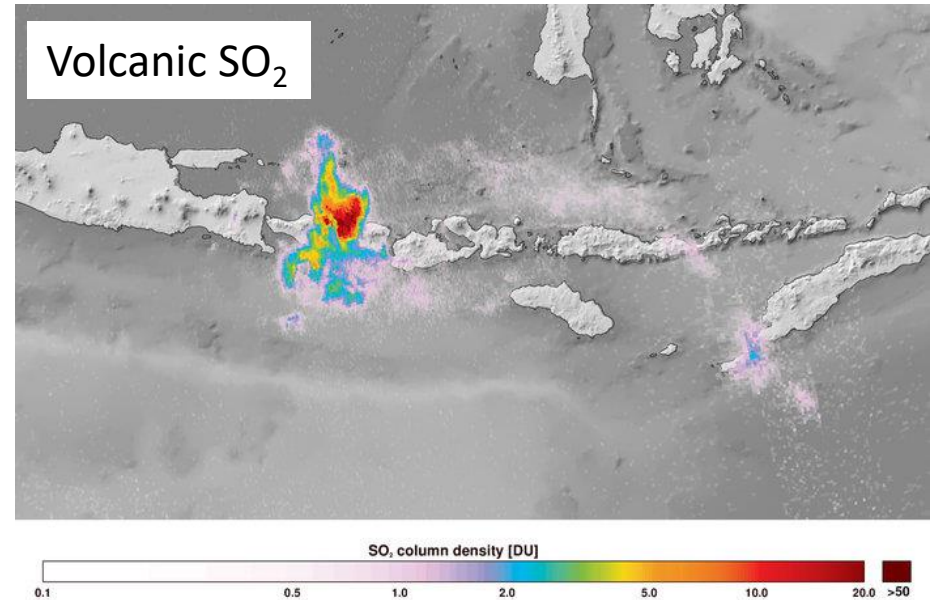
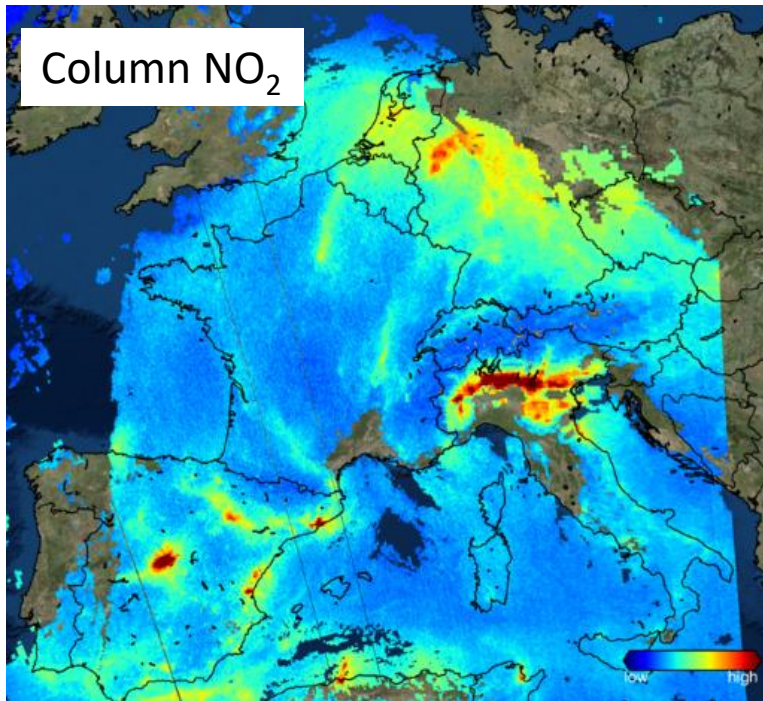
- Using satellite data acquired over several years, we can develop robust emission estimates from major cities and large point sources, such as coal power plants.



Urban areas	NEI emissions	
	2005–2014 (Mg h ⁻¹)	OMI-derived emissions (Mg h ⁻¹)
Atlanta, GA	12.7	6.7 ± 2.8
Boston, MA	10.3	10.9 ± 4.5
Charlotte, NC	3.3	2.7 ± 1.1
Chicago, IL	30.7	23.3 ± 9.7
Cincinnati, OH	7.9	4.9 ± 2.0
Dallas, TX	14.8	8.1 ± 3.4
Denver, CO	10.0	12.1 ± 5.0
Detroit, MI	26.1	18.7 ± 7.8
El Paso, TX	2.2	3.2 ± 1.3
Houston, TX	13.5	11.3 ± 4.7
Indianapolis, IN	4.3	3.1 ± 1.3
Jacksonville, FL	5.2	4.7 ± 2.0
Kansas City, MO	10.2	5.1 ± 2.1
Las Vegas, NV	6.1	6.7 ± 2.8
Los Angeles, CA	40.1	40.0 ± 16.6
Louisville, KY	6.3	2.5 ± 1.0
Memphis, TN	4.4	1.5 ± 0.6
Miami, FL	13.4	5.6 ± 2.3
Minneapolis, MN	12.8	9.3 ± 3.9
Nashville, TN	2.9	2.0 ± 0.8
New Orleans, LA	7.2	3.6 ± 1.5
New York, NY	43.2	50.7 ± 21.1
Philadelphia, PA	17.8	23.3 ± 9.8
Phoenix, AZ	10.8	12.2 ± 5.1
Portland, OR	6.9	9.9 ± 4.1
Richmond, VA	3.6	1.8 ± 0.7
Salt Lake City, UT	3.6	8.2 ± 3.5
San Antonio, TX	5.4	3.2 ± 1.4
San Diego, CA	6.0	8.8 ± 3.7
Seattle, WA	13.0	13.3 ± 5.7
St. Louis, MO	11.0	4.9 ± 2.0
Tampa, FL	8.5	6.9 ± 2.9
Tucson, AZ	3.1	1.5 ± 0.6
Virginia Beach, VA	6.1	4.6 ± 1.9
Washington, DC	18.5	13.0 ± 5.5



Just launched! TROPOMI (TROPOspheric Monitoring Instrument)



Images acquired from: http://www.esa.int/Our_Activities/Observing_the_Earth/Copernicus/Sentinel-5P/Sentinel-5P_brings_air_pollution_into_focus

Emission estimates can be developed on much shorter timescales!
Monthly, if not weekly!

Thank you! Please feel free to contact us by email:

Dan Goldberg dgoldberg@anl.gov

Zifeng Lu zlu@anl.gov

David Streets dstreets@anl.gov