



LOW CARBON

V E N T U R E S



Agenda

- **Oxy Low Carbon Ventures**
- **Elements to Scale Sequestration**
- **Sequestration Hub Concept**
- **Sequestration Business Model + Market**
- **Example Timeline**

ELEMENTS REQUIRED TO SCALE SEQUESTRATION

CAPTURE

- Source size
- Ability to capture
- Economics — incentives, penalties
- Timeline

TRANSPORT

- Available infrastructure/ability to build
- Available capacity
- Cost to transport vs. amalgamation of storage

LAND

- Economics — market rate
- Legal framework for access and liability
- Public acceptance

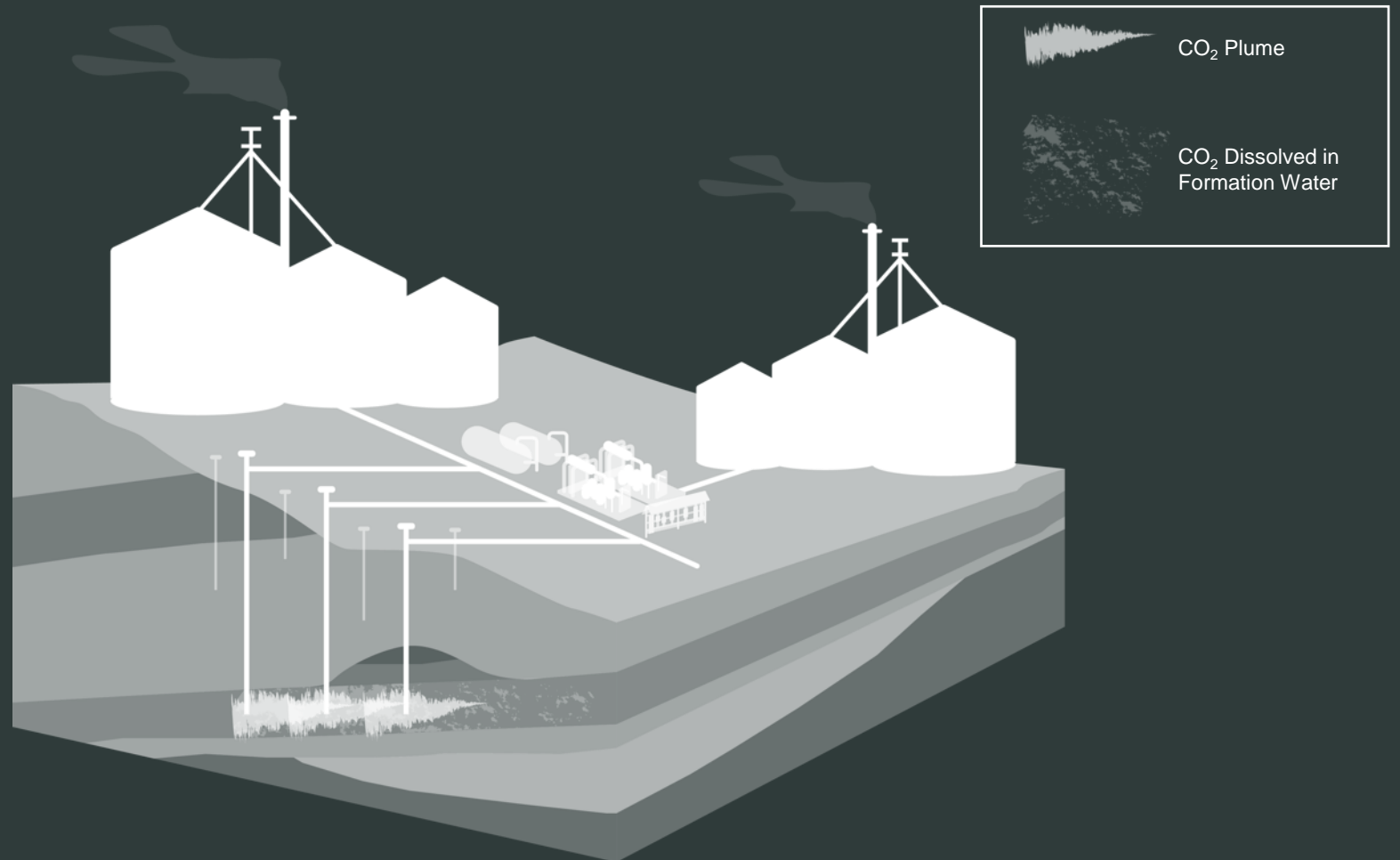
CHAIN (INTERACTION) RISK

DEDICATED SEQUESTRATION HUBS

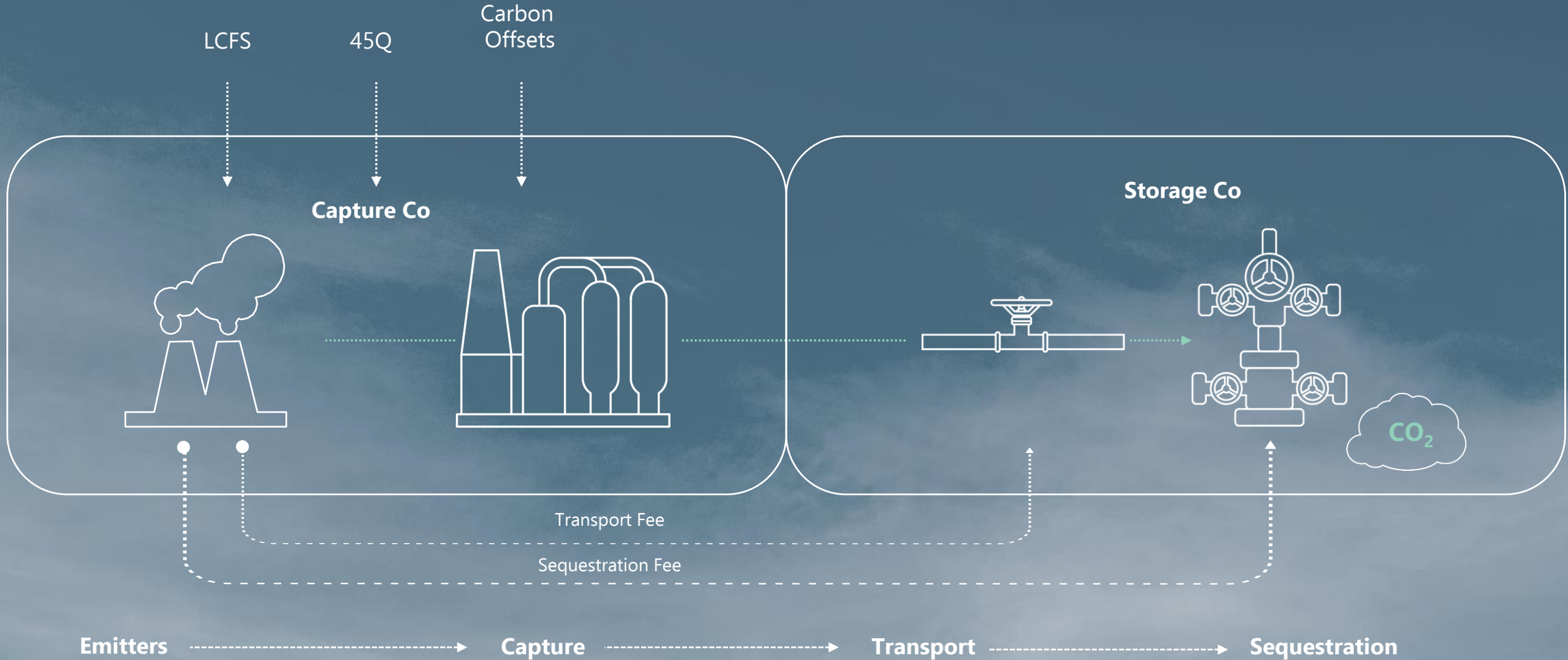
Our hub-based model is a scalable solution that allows access to a shared carbon infrastructure, bringing options to emitters looking to explore more viable carbon management strategies.

A TYPICAL SEQUESTRATION HUB INCLUDES:

- + Multiple CO₂ emission sources, ~3m+ MTPA
- + CO₂ pipelines and spur lines to transport CO₂
- + 3+ injection wells
- + 5+ monitoring wells
- + A separation and CO₂ compression and monitoring facility
- + ~30 surface acres

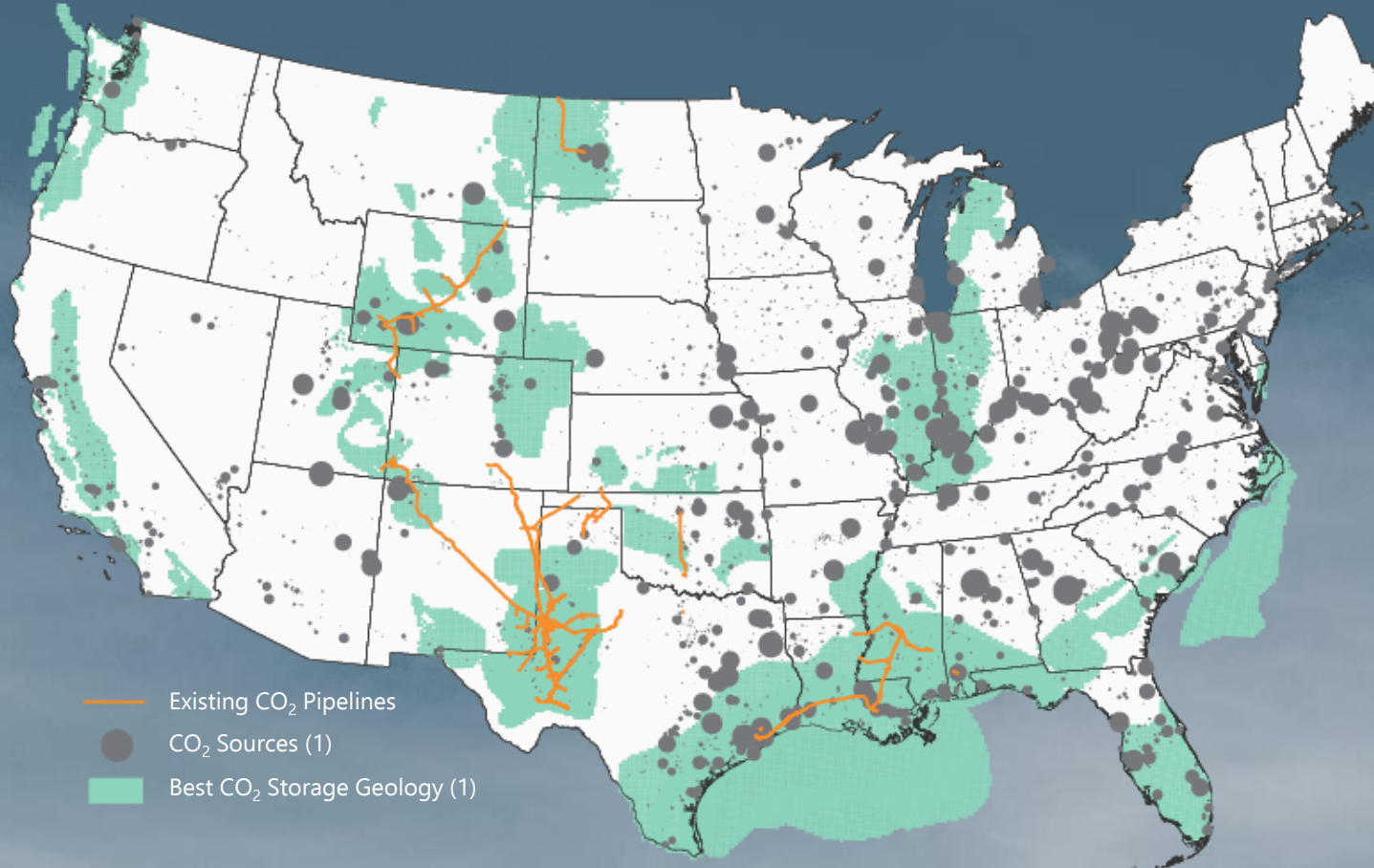


Carbon Capture and Storage Value Chain



USA Market Size

2,700 MM MTPA of CO₂ from industrial sources emitted in US in 2018 with less than 15 MM MTPA captured and sequestered (2)



- Existing CO₂ Pipelines
- CO₂ Sources (1)
- Best CO₂ Storage Geology (1)

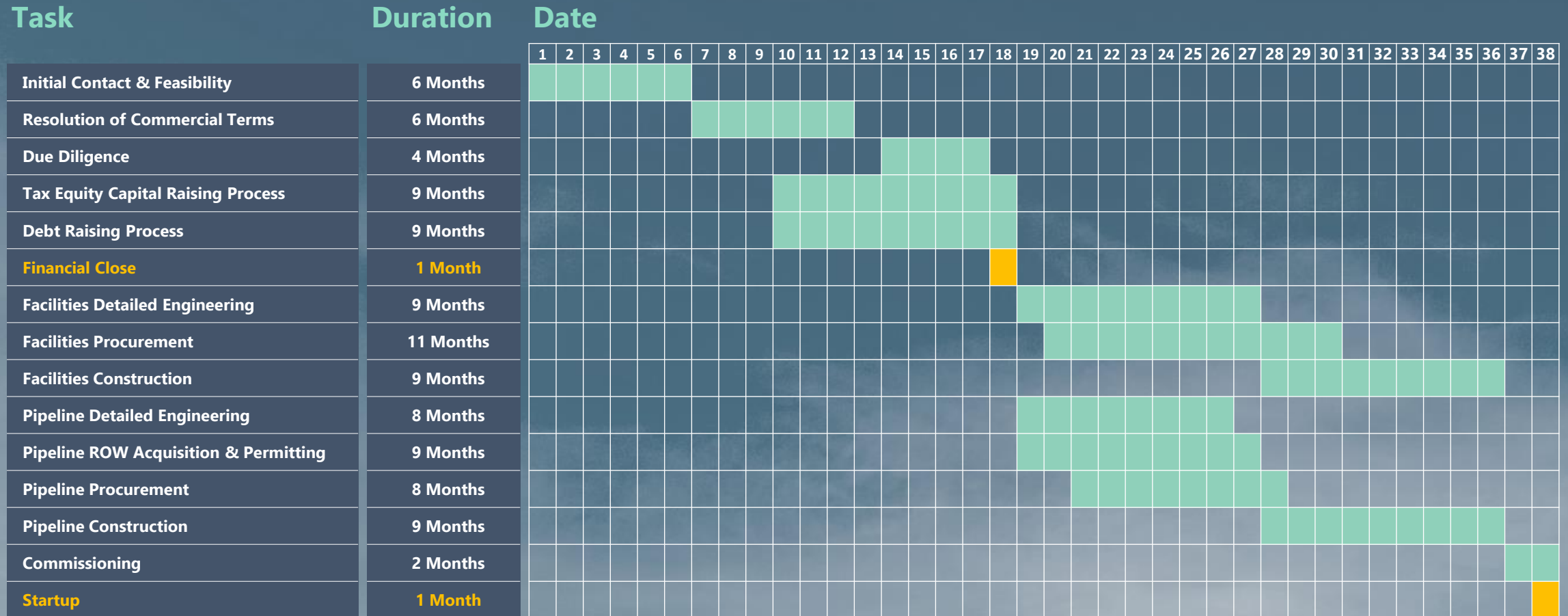
Location Priority Criteria

- ✓ Emissions Sources
- ✓ Suitable Geology
- ✓ Land Acquisition
- ✓ Data Availability
- ✓ Existing Infrastructure
- ✓ Regulatory Environment

¹ Source: DOE Carbon Storage Atlas

² Source: EPA Greenhouse Gas Reporting Protocol (GHGRP)

Sample Capture Project Timeline To COD



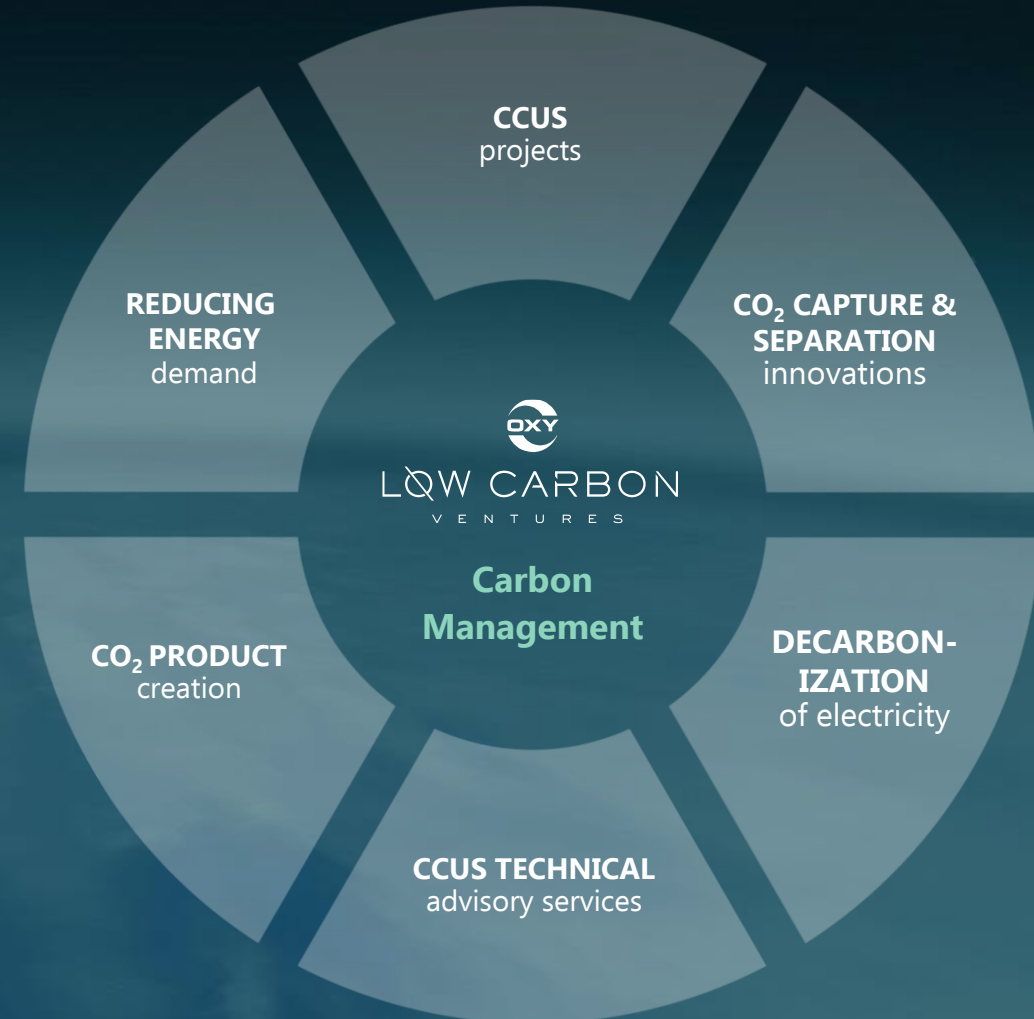
Backups

Oxy Low Carbon Ventures

Oxy Low Carbon Ventures was formed to sustainably enhance Occidental's business, while providing impactful global emissions reduction solutions.

This group is dedicated to:

- Global Leadership in providing low-carbon solutions and advisory services to support a sustainable energy and development future
- Leveraging our 40 years of expertise in carbon management and large-scale carbon dioxide separation, transportation, use and storage to develop CCUS projects
- Directly reducing Occidental's Scope 1-3 emissions
- Increasing energy efficiency



THE CHALLENGE TO SCALING SEQUESTRATION

