



# Pamela Tomski, Analytics Adviser

*Department of Energy, National Science Foundation,  
Environmental Protection Agency*

SAS Government LLC

E. Pamela.Tomski@sas.com

M. (202) 390-8896

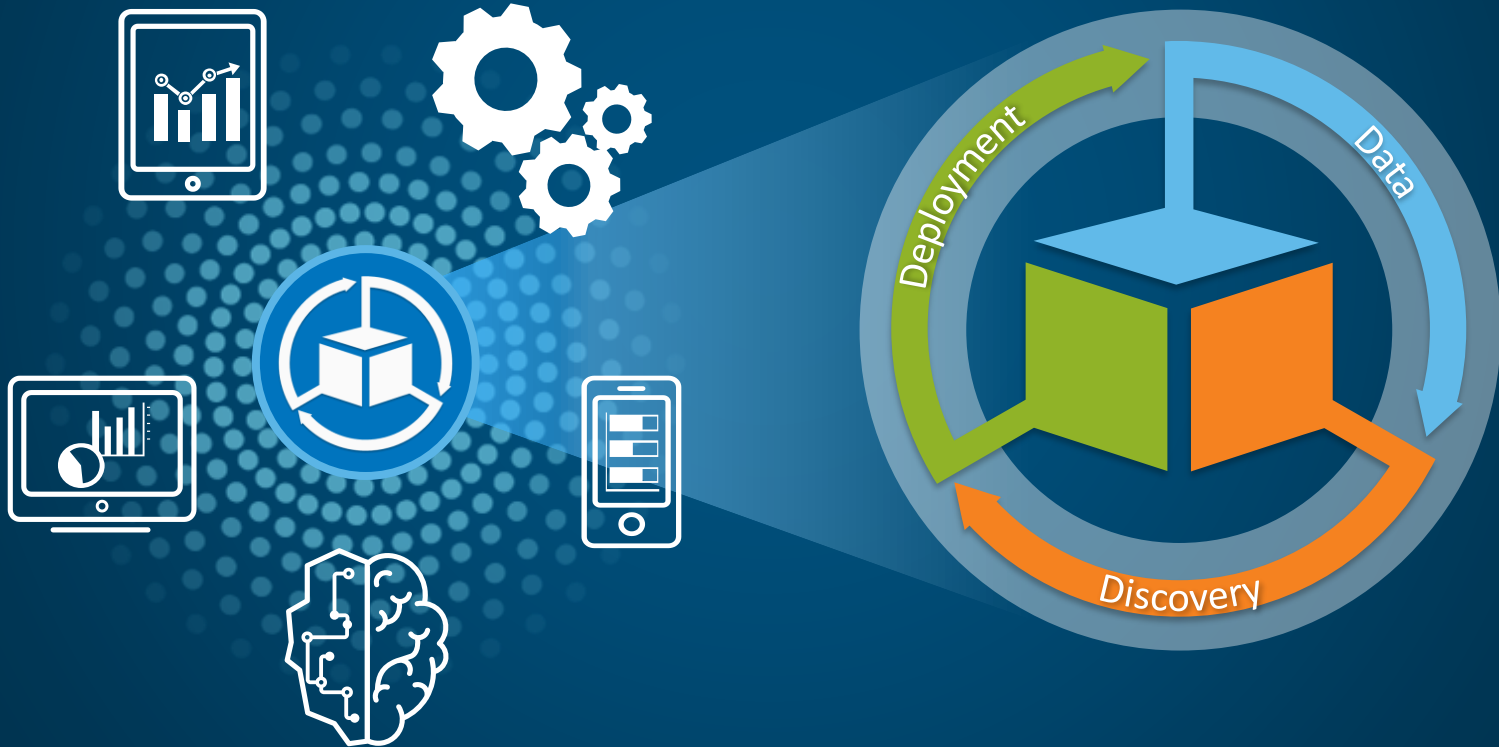


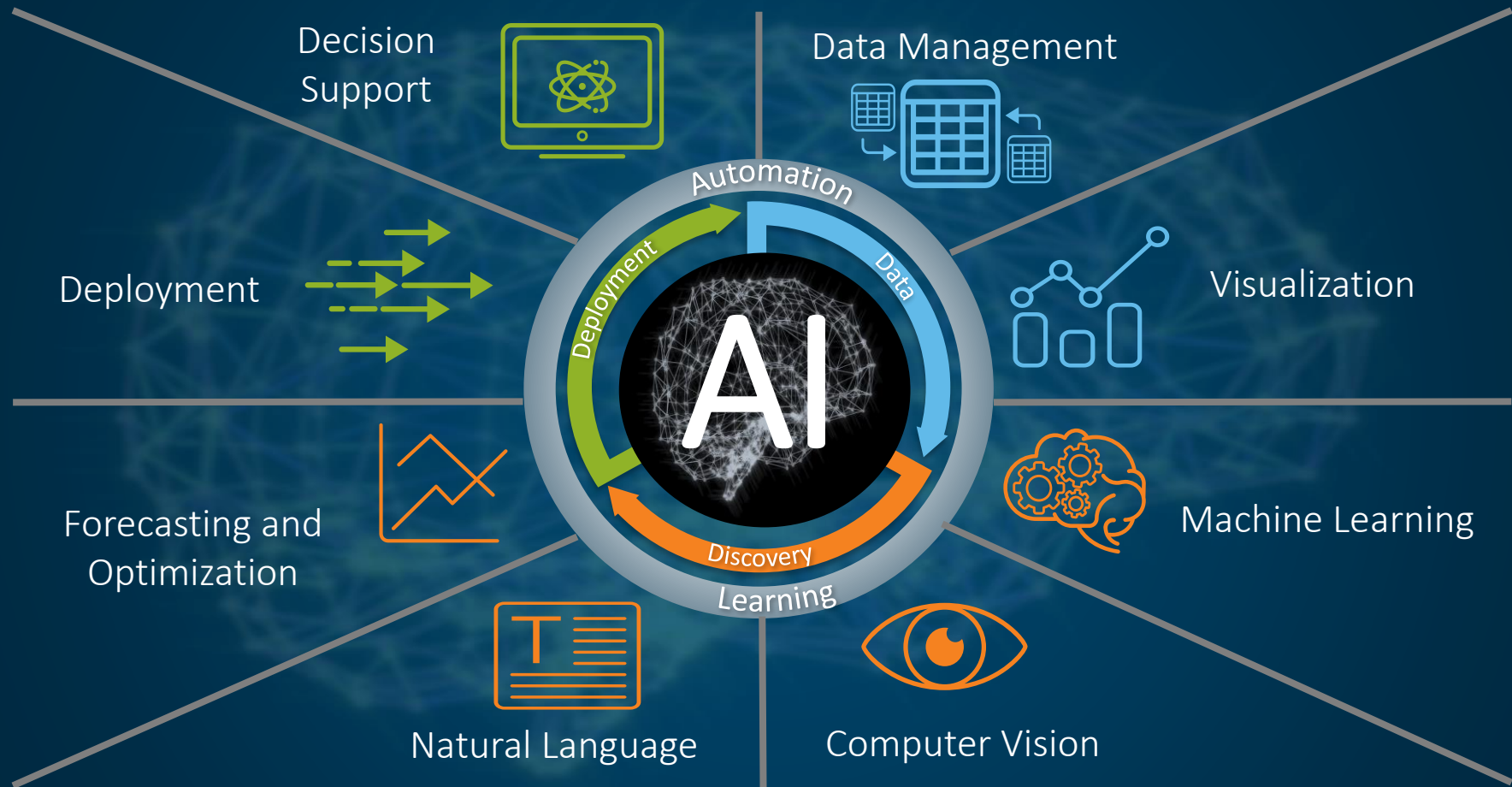
# Everyone wants to be a data scientist



# The SAS Platform

... is a software foundation that's engineered specifically to generate insights from data, in any computing environment.





# SAS Platform at INL

## NST's Nuclear Data Management and Analysis System (NDMAS)

- Motivated by DOE's Public Access Plan (2014)
- Web-based collaboration for the ART research community
- Provides qualification traceability to level required to support design decisions and licensing
- Extensive statistical analysis capabilities
- Enables access-controlled web delivery of data, graphs, and analysis results to researchers

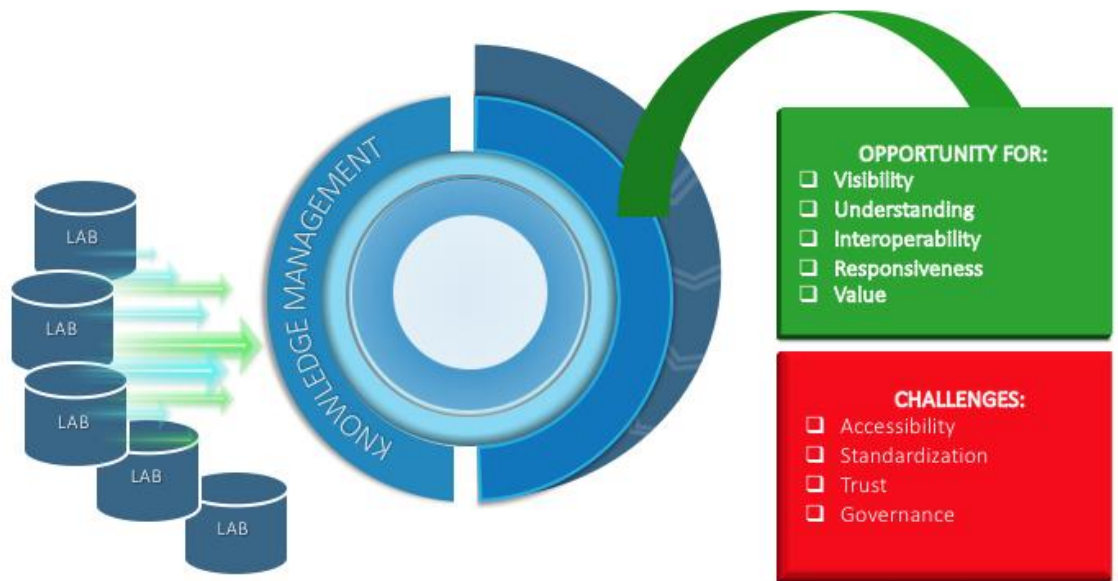


The screenshot displays the NDMAS web application. The top navigation bar includes 'Home', 'About', and 'Help'. The main content area features a sidebar on the left with categories like 'Fuel Development and Qualification', 'Reactor Physics', and 'HTM Data'. The central content area is titled 'High Temperature Reactor Program' and contains a detailed article about HTGRs, including a 3D diagram of a reactor system. Below the article, there are sections for 'ART Program point-of-contact' and 'NDMAS point-of-contact', each with a portrait photo of a representative.

*Data management system that stores, qualifies, and manages data collected across the Advanced Reactor Technologies (ART) Program*

# Knowledge Management Platform

## SAS Platform for Laboratory Research Data



- Goal is to improve the management of research data across the lab
- Understand what research is being conducted and who is conducting it
- Determine opportunities to leverage research investments
- Provide public facing landing pages for curated research data

*Establish an enterprise data management platform for lab wide research data and computer simulations*

# Project Data Sphere

## SAS Platform for Research



### Project Data Sphere

Project Data Sphere integrates and analyzes historical, patient-level data from phase three cancer clinical trials to spark innovation by opening up new research possibilities - like knowing sooner if a treatment is working. The organization uses SAS to host the research platform and provides free access to analytics technology and experts.

"There's a ton of information that's just left on the table, and it's routine stuff that nobody pays attention to. Data sharing can draw attention to connections between different commonly measured things that you would just never see otherwise. It can change your whole thinking about where to focus."

**Dr. Howard Scher**, Research Lead at Project Data Sphere



- Goal is to spark innovation by opening up new research possibilities
- Designed to share, integrate and analyze historical, patient-level data from phase-three cancer clinical trials
- Brings together data that are analyzed for undiscovered potential
- SAS analytics are available on demand to researchers
- Possible application to key DOE research challenges

*SAS hosted research platform where researchers share data and access analytics on demand*