



---

# **Joint Development Area (JDA) Successful Corporation Model**

---

**15 November 2017  
Zhiyong Zhao  
Vice President, Asia**

# About Hess Corporation



## ONSHORE

A leading shale oil and gas producer

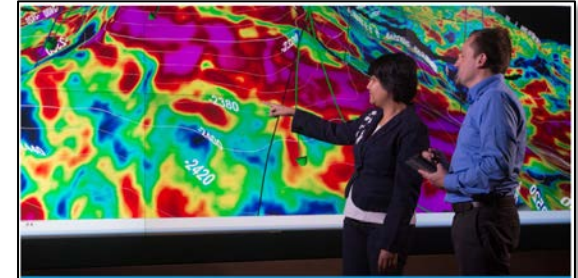
- Leading acreage position in core of North Dakota Bakken shale play and one of the largest midstream operators in the Bakken
- Premier acreage position in wet gas window of Utica shale play in Ohio (U.S.)
- Proven track record applying lean manufacturing techniques to drive down costs and increase well productivity and efficiency



## OFFSHORE

A deepwater production and development pioneer

- Top quartile performance in offshore drilling and project delivery
- One of the largest producers in the Deepwater Gulf of Mexico
- Selected as operator by Malaysian national oil company and Gulf of Mexico partners
- Key developments offshore Asia (North Malay Basin & JDA) and Gulf of Mexico (Stampede)

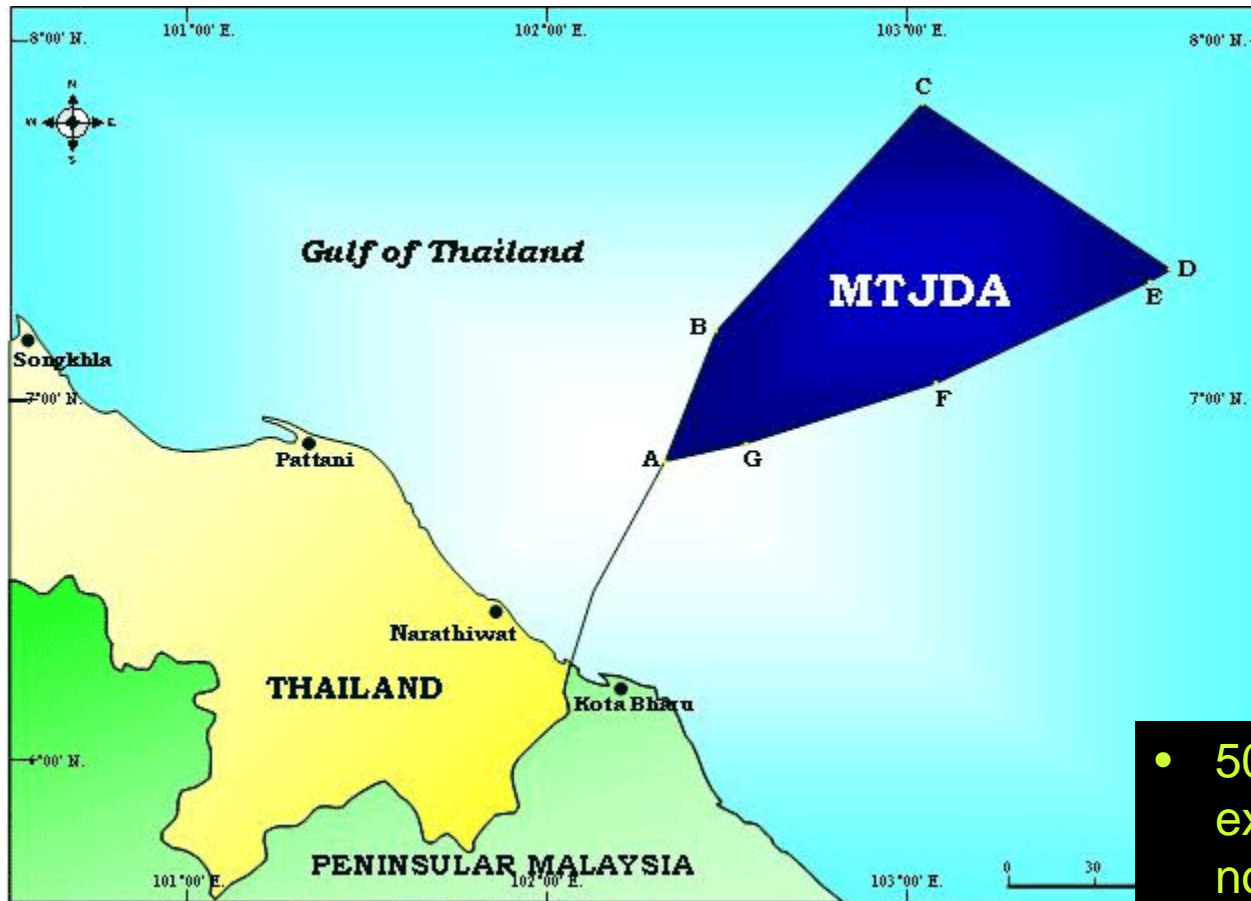


## EXPLORATION

A strategically focused, high-impact explorer

- Growing inventory of material oil discoveries on Stabroek Block, offshore Guyana, a prolific world-class oil play
- Gross discovered recoverable resource for the Stabroek Block estimated between 2.25 billion and 2.75 billion barrels of oil equivalent
- Fifth Guyana discovery (Turbot) to be appraised in 2018

# Malaysia-Thai Joint Development Area



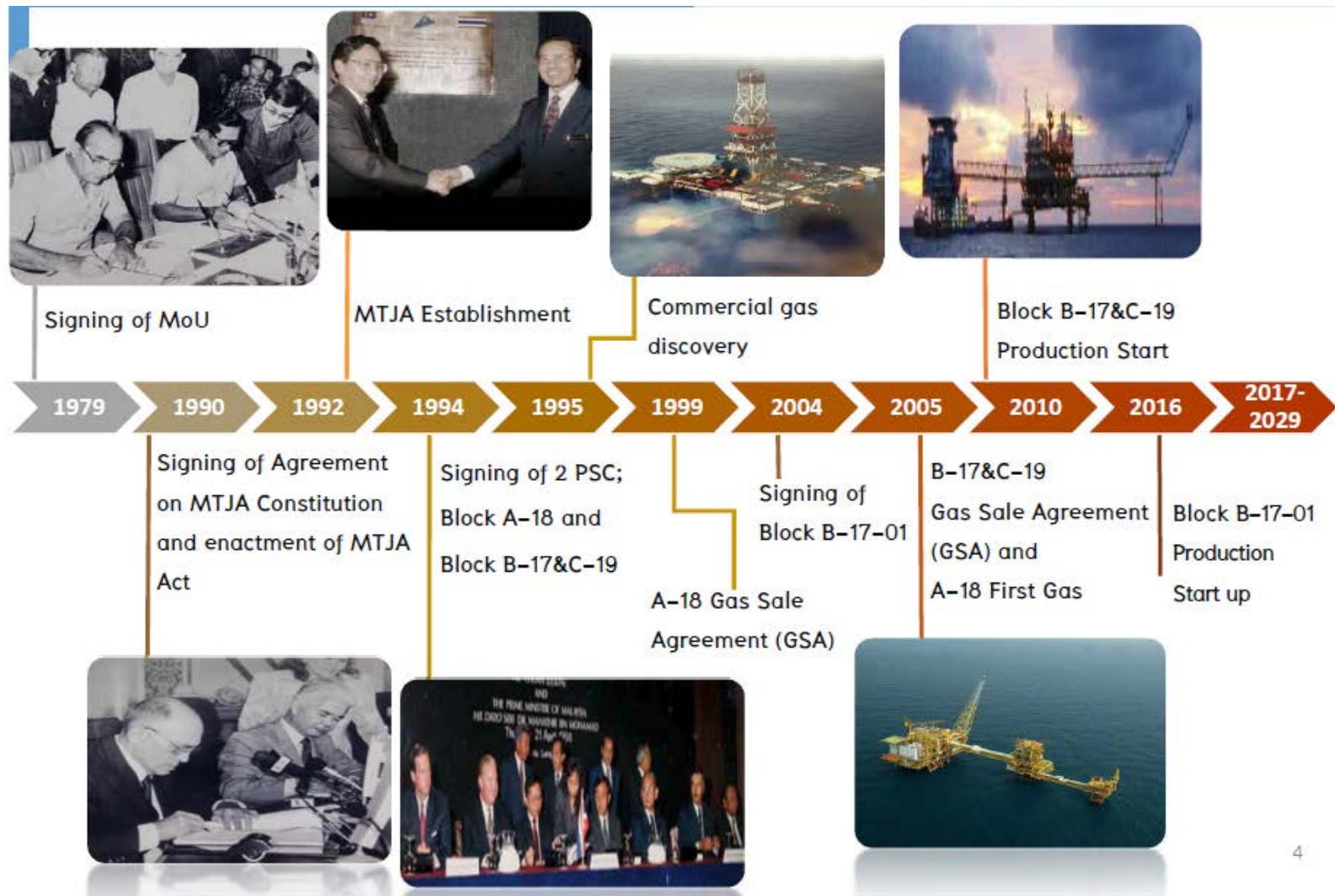
- Memorandum of Understanding signed between Thailand and Malaysia, 1979
- MTJDA Agreement between Thailand and Malaysia 1990
- MTJA Acts 1990 passed in Thailand and Malaysia



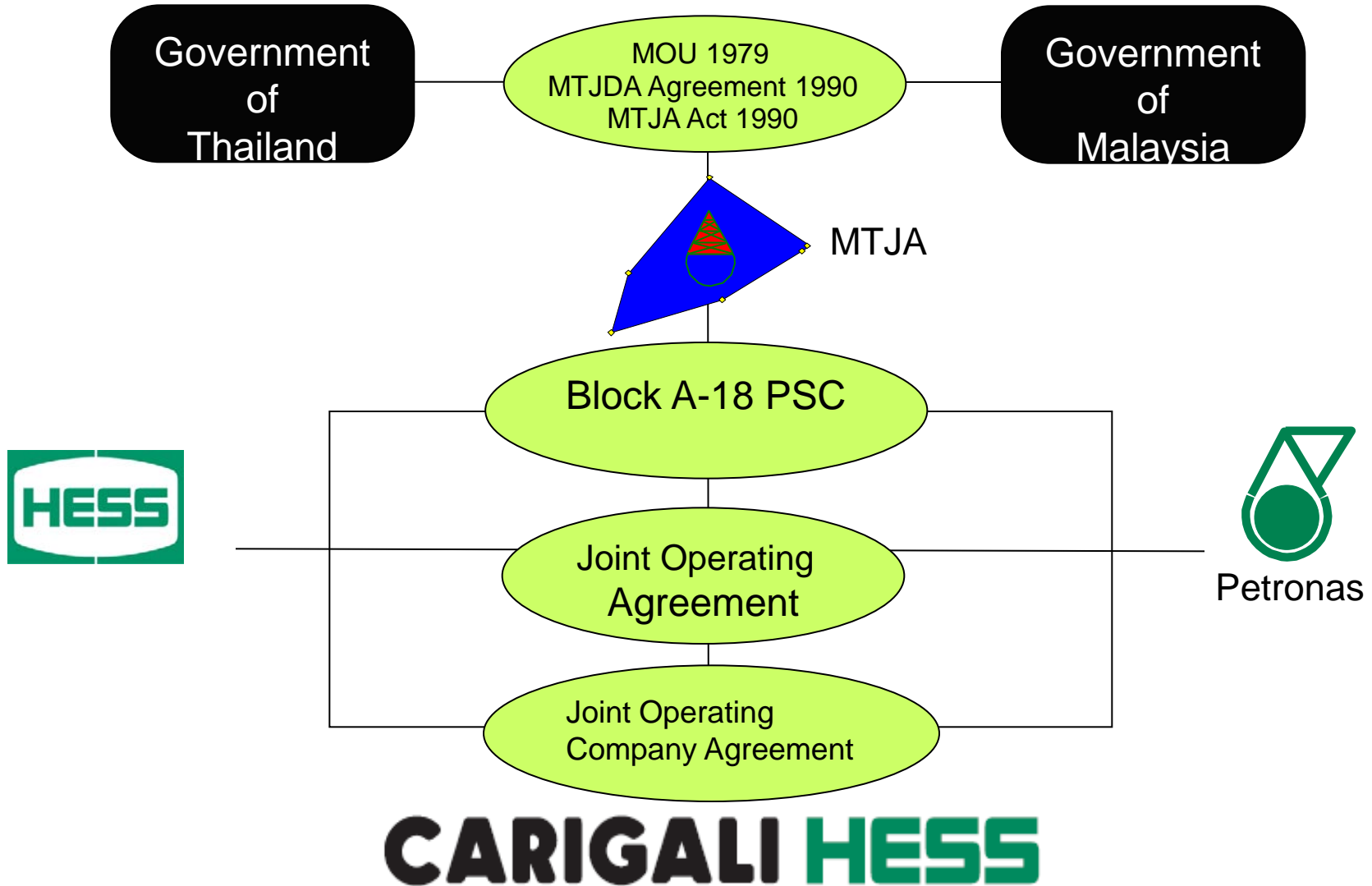
- 50 year allowance of exploration & exploitation of non living natural resources from 1979 to 2029
- Further allowance for extension beyond 2029 in 2017

MTJDA is the overlapping continental shelf claimed by both Malaysia and Thailand, approximately 7,250sq km

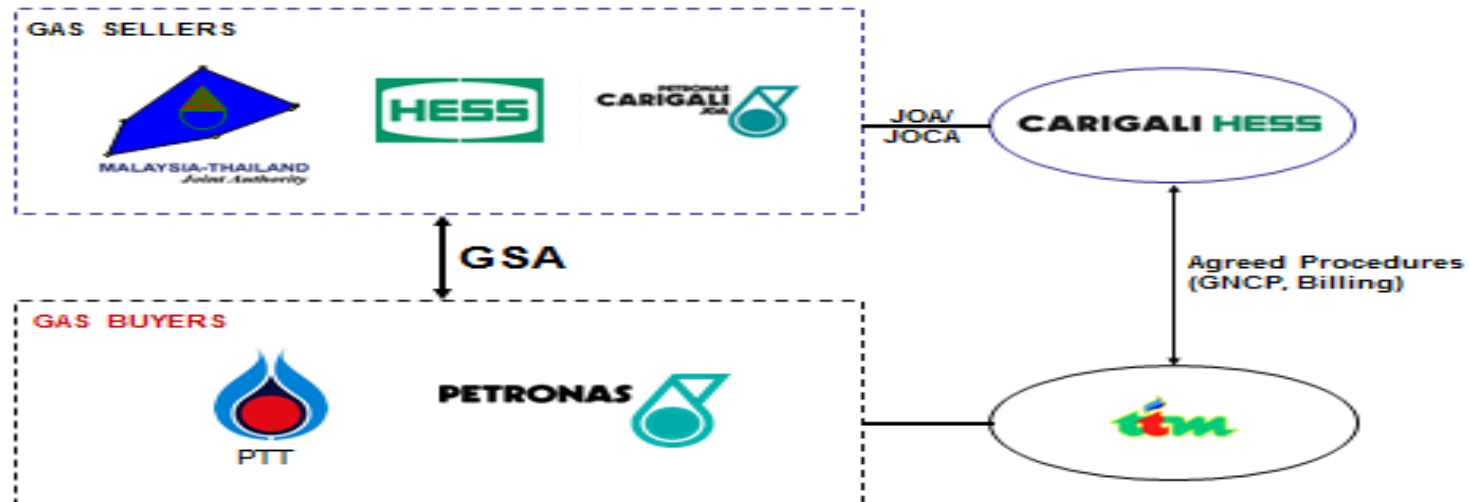
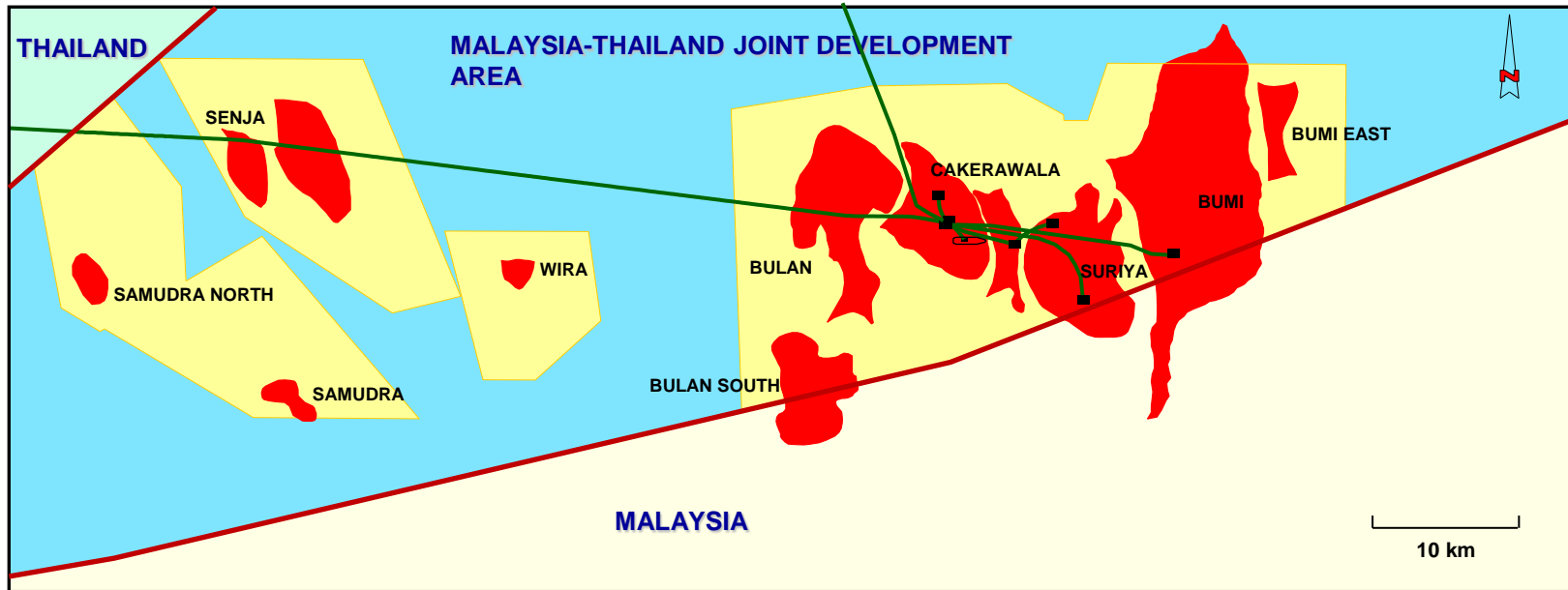
# MTJDA Chronology



# JDA Block-A18 PSC: Authority & Contractor Relationship



# JDA Block-A18





# JDA Block-A18 Cakarewala Complex



- 50% JDA gas is supplied to Chana power plants and NGV in southern Thailand and the balance is to Rayong.
- 50% JDA and NMB gas supply more than 25% of Peninsular Malaysia gas demand
- Cumulative 3 TCF Gas and 30 MMBBLS Condensate Sales 2005 - 2017
- 1 Bcfd gas produce capacity
- 20+ years remaining field life

