

Southern Company

Building the Future for Clean Coal



Clean Coal Industry Forum

Billings, MT
August 25, 2015

**SOUTHERN
COMPANY**

**SOUTHERN
COMPANY**

**SOUTHERN
COMPANY**

**SOUTHERN
COMPANY**

**SOUTHERN
COMPANY**

**SOUTHERN
COMPANY**

**SOUTHERN
COMPANY**

**SOUTHERN
COMPANY**

**SOUTHERN
COMPANY**

Southern Company at a glance

Vertically integrated, regulated utilities are the core of our business

Regulated Utilities

- Alabama Power
- Georgia Power
- Gulf Power
- Mississippi Power

Wholesale Power

- Southern Power

Other

- Southern LINC Wireless
- Southern Telecom

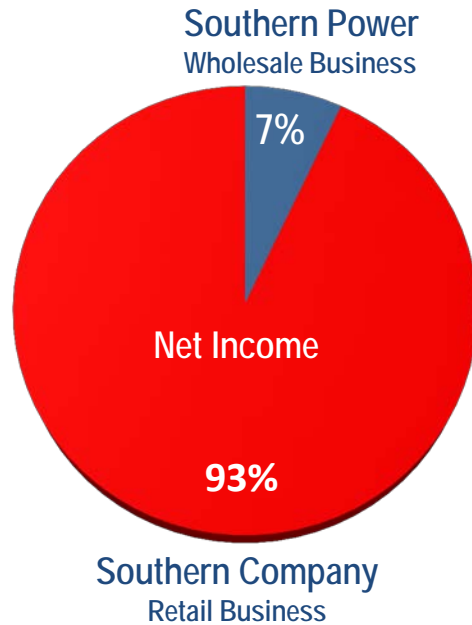
2014 energy generation

- 4% renewables
- 16% nuclear
- 40% coal
- 40% gas



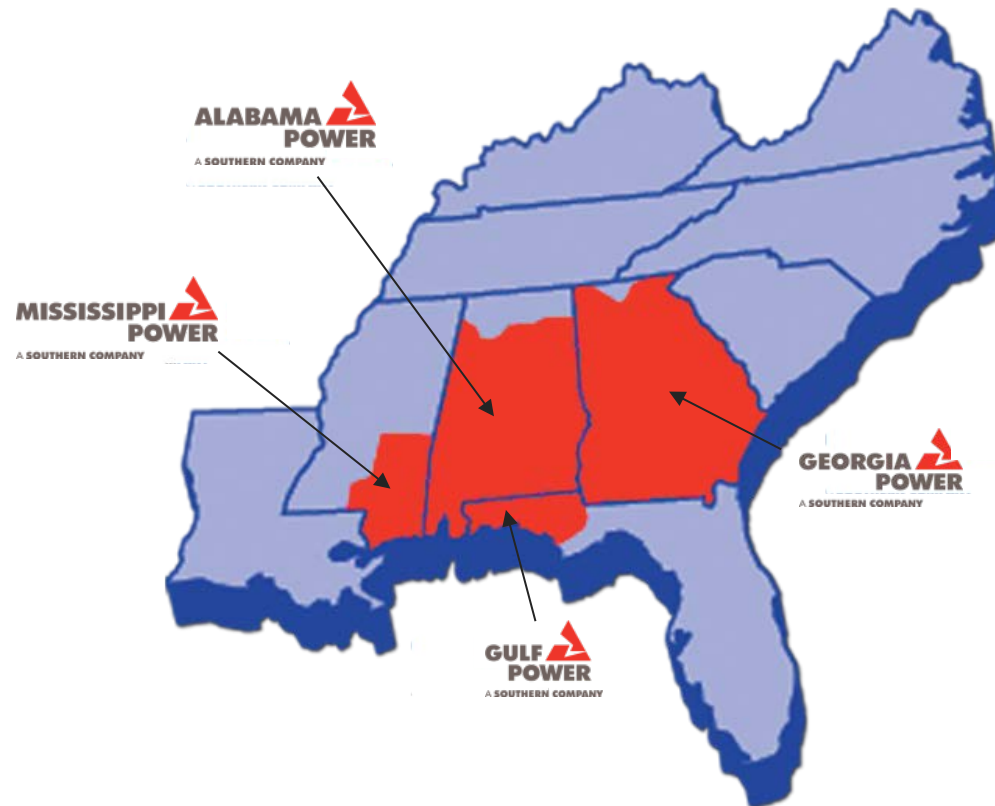
Southern Company at a glance

Vertically integrated, regulated utilities are the core of our business

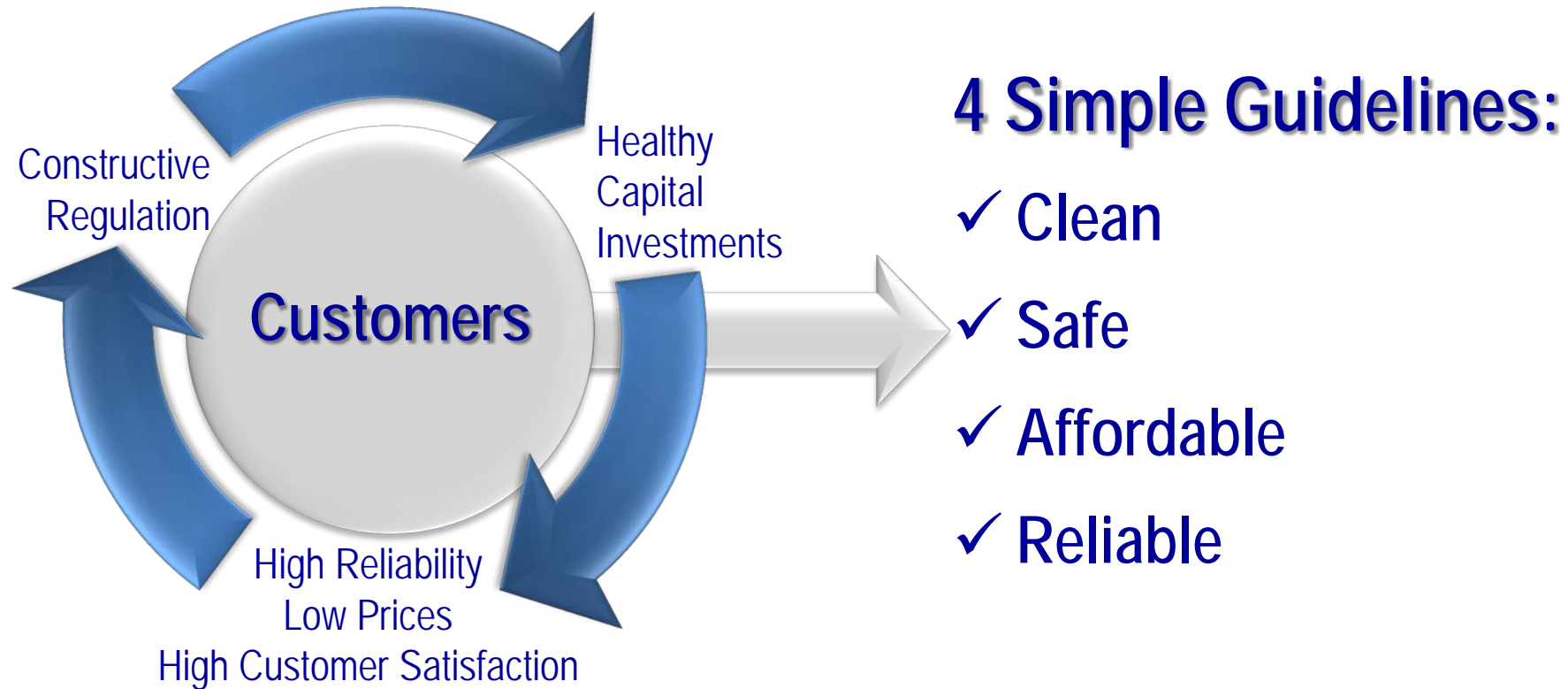


2014 energy generation

- 4% renewables
- 16% nuclear
- 40% coal
- 40% gas



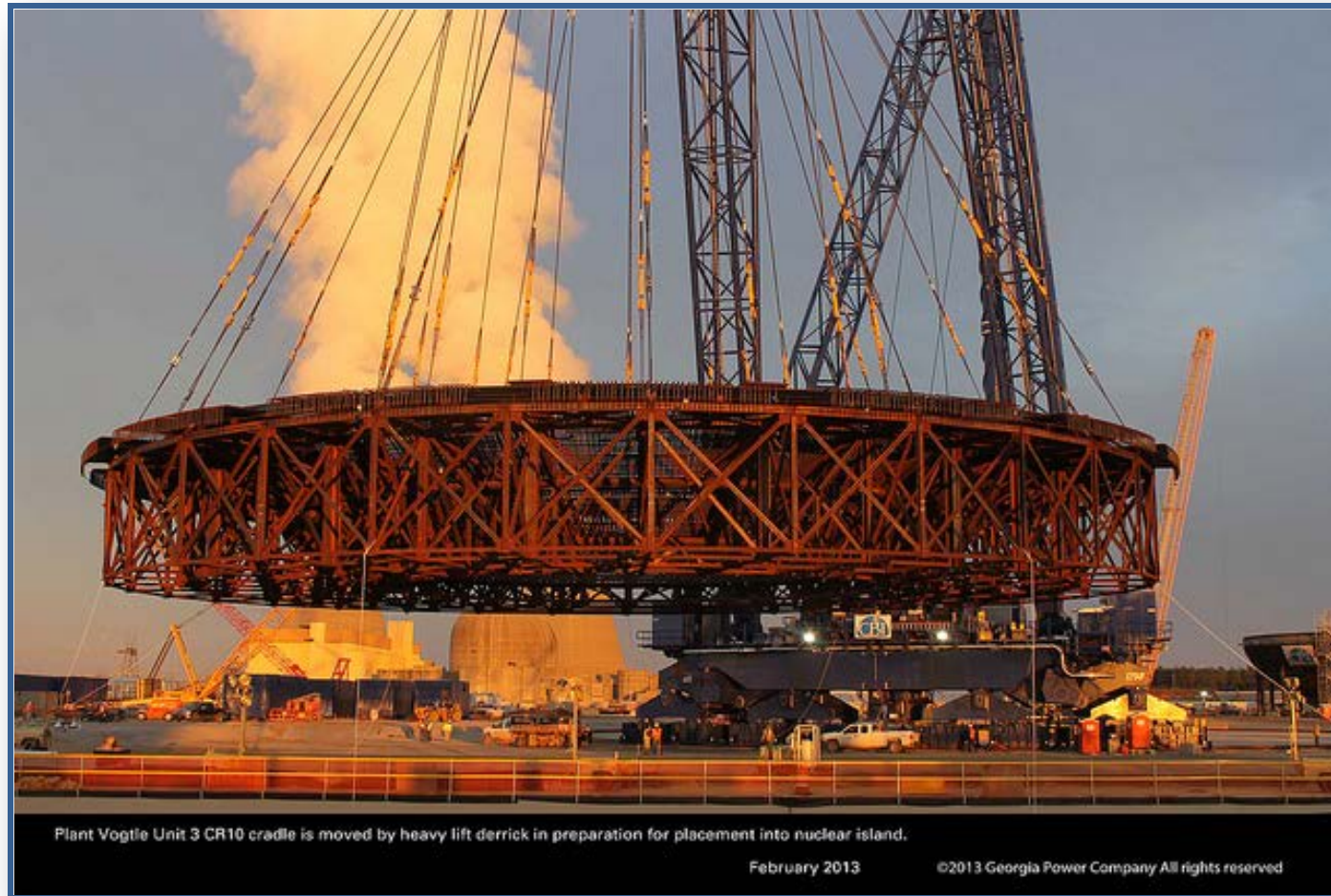
Customer-Focused Business Model



The fundamentals for our business

“Full Portfolio” Energy Strategy

America's First New Nuclear Plant at Georgia Power Plant Vogtle



"Full Portfolio" Energy Strategy

Over 10,000 MW of Natural Gas Combined Cycle in last decade



2,500 MW at Plant McDonough, Atlanta, Georgia

"Full Portfolio" Energy Strategy

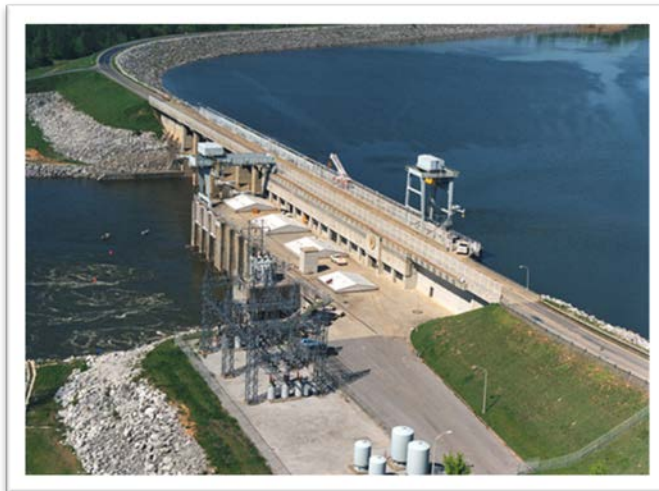
Owner and Operator of over 4,000 MW of Renewable Generation



Adobe Solar Facility, Kern County, CA



***Kay Wind Facility
Kay County, OK***



***Henry Dam
Ohatchee, AL***



***Nacogdoches Generating Plant
Cushing, TX***

"Full Portfolio" Energy Strategy

Assisting Retail electricity consumers to apply energy efficient technologies.



Promoting efficient end-use technology



Residential energy audits



U.S. Steel's energy efficient plant, Birmingham, Alabama



*Energy efficient commercial buildings,
Atlanta, Georgia*

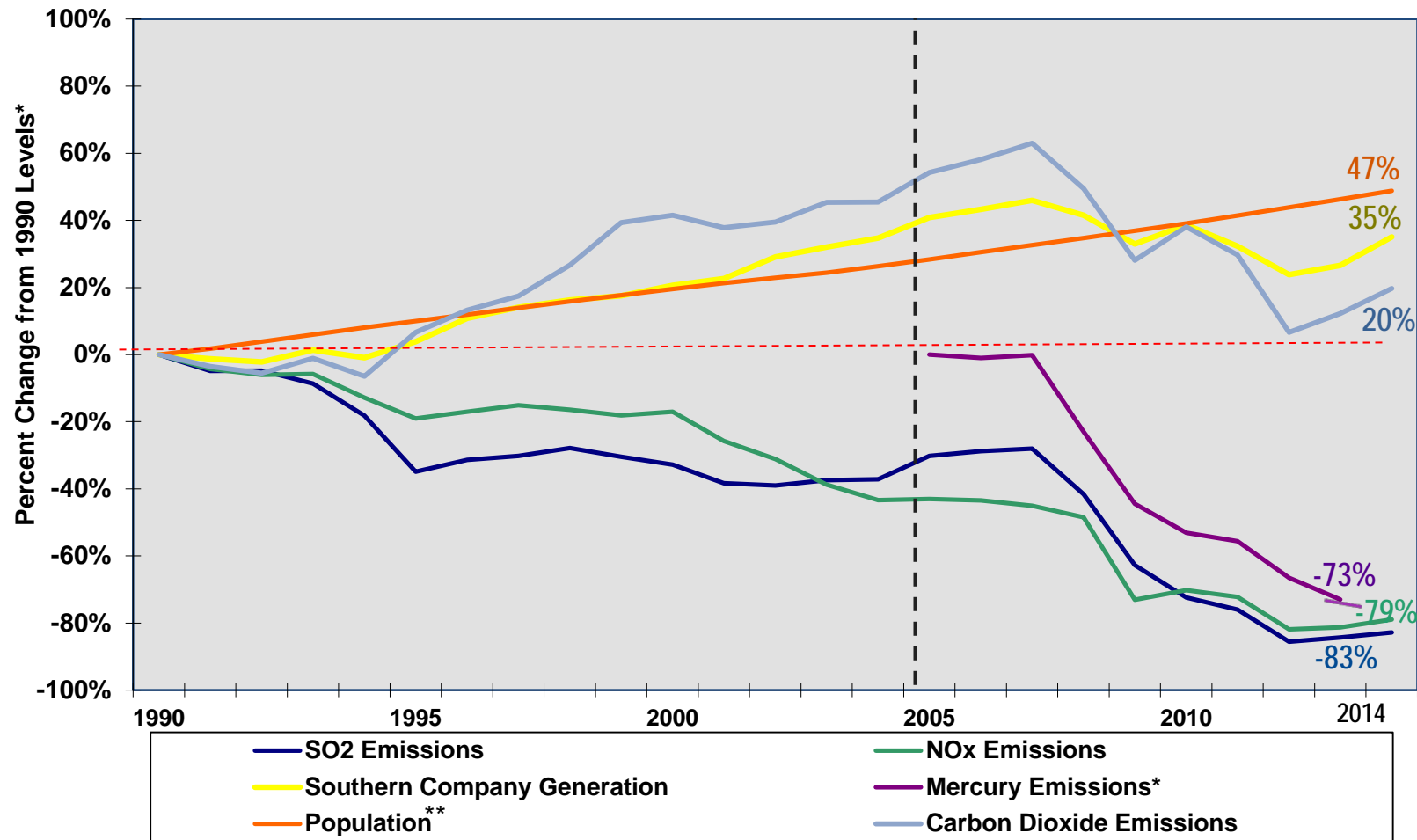
“Full Portfolio” Energy Strategy

Southern a long history of advanced thermal power station operation.



Plant Bowen Electric Generating Station, Cartersville, Georgia

Southern has reduced emissions from thermal power plants, while demand is up.



* For mercury, percent change from 2005, data through 2014.

** Based on chambers of commerce and census data and statistics for Southern Company service territories.

“Full Portfolio” Energy Strategy

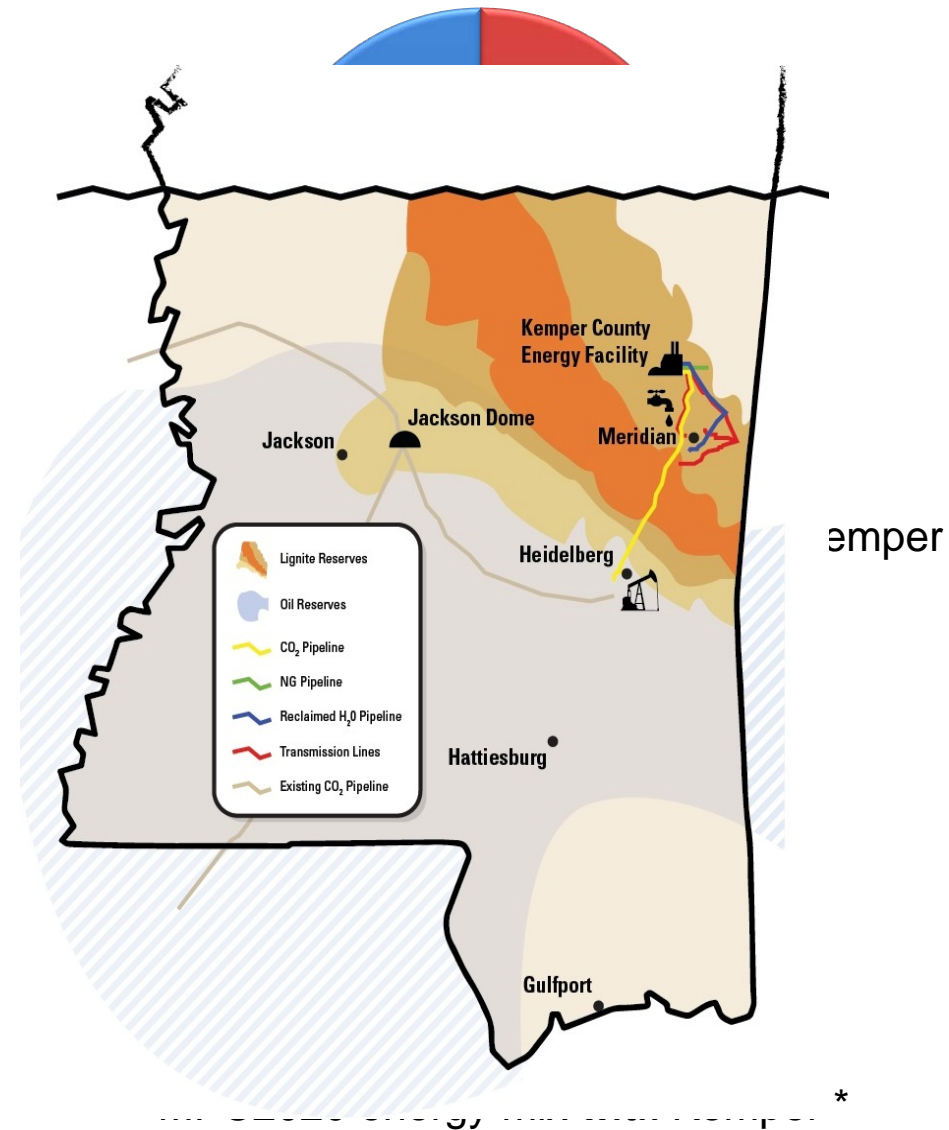
Southern is building 21st Century coal: IGCC with CO₂ capture at largest scale in the U.S.



Kemper County Energy Facility, Kemper County, Mississippi

Why Build Kemper?

- Fuel diversity
- Fuel price stability
- Inland location
- 21st century technology
- Environmental profile



* Includes unit retirement and fuel switch announcements (Aug. 4, 2014)

Kemper is commercializing Clean Coal

- Air emissions of a NG-fired plant
- Saleable Co-products
 - 65% Carbon Capture ~ 3,450,000 tonnes/yr
 - Sulfuric Acid ~ 136,000 tonnes/yr
 - Anhydrous Ammonia ~17,000 tonnes/yr

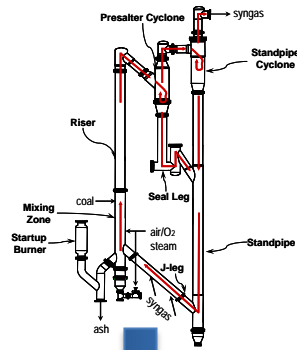


- Water emissions
 - City of Meridian Treated Effluent
 - Zero Liquid Discharge Facility

CO₂ capture at this scale is challenging

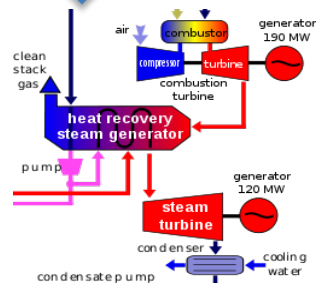


Kemper produces multiple products



Gasifier

Syngas Clean-up



Combined Cycle

CO₂



Sulfuric acid (H₂SO₄)



20/day

Ammonia (NH₃)

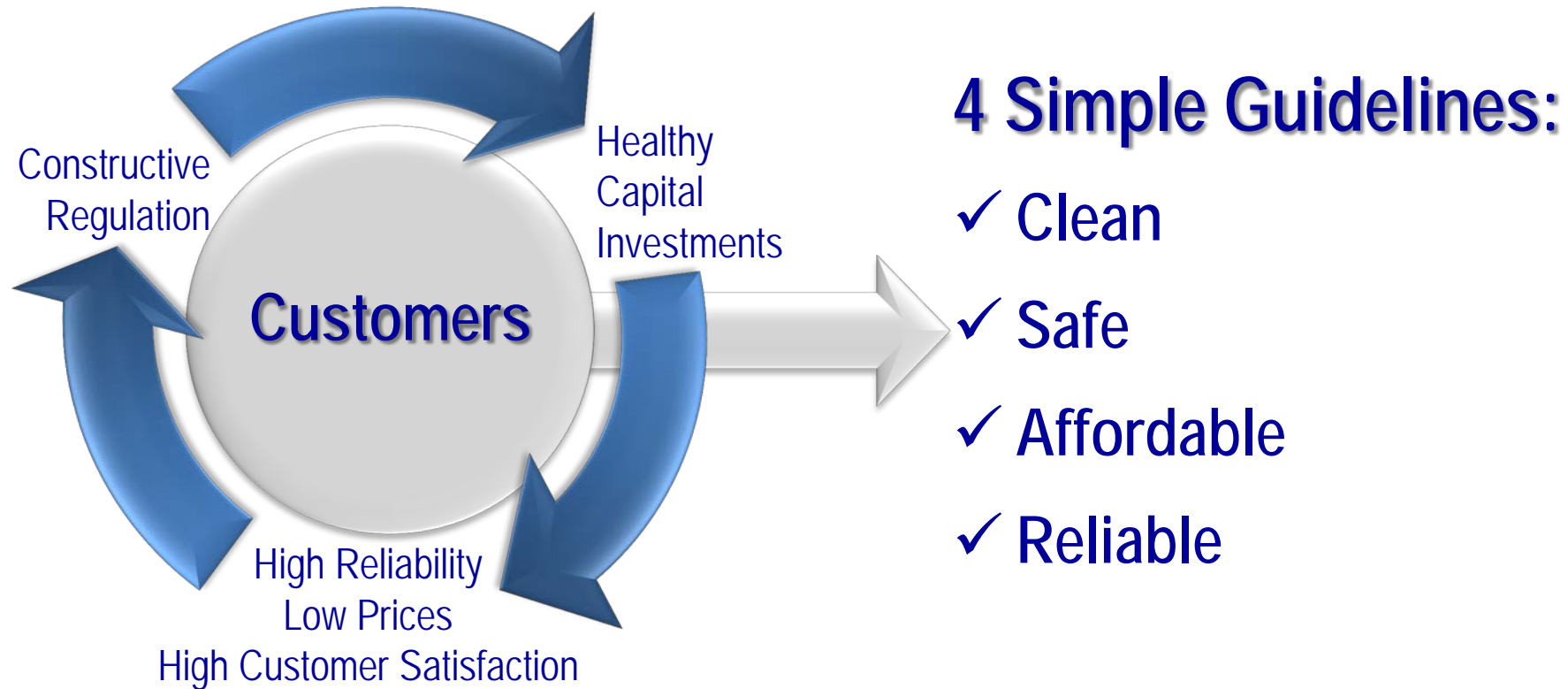


4/day

Electricity, 583 MW net



Customer-Focused Business Model



The fundamentals for our business

Southern Company

Building the Future for Clean Coal

Thank You!

Clean Coal Industry Forum

Billings, MT
August 25, 2015

