

Project Management: A Core Competency

Solutions for Today | Options for Tomorrow



José D. Figueroa
Carbon Capture Team
Supervisor, TDC

Presentation to Regional Carbon
Management Applicant
Education Workshops

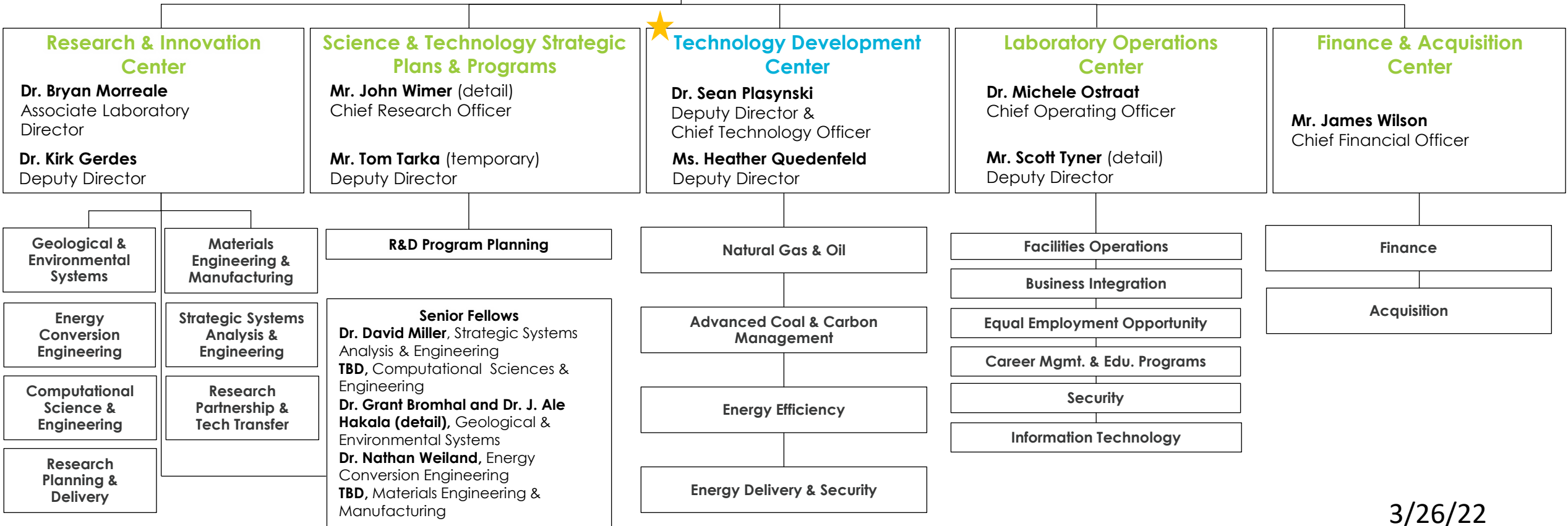
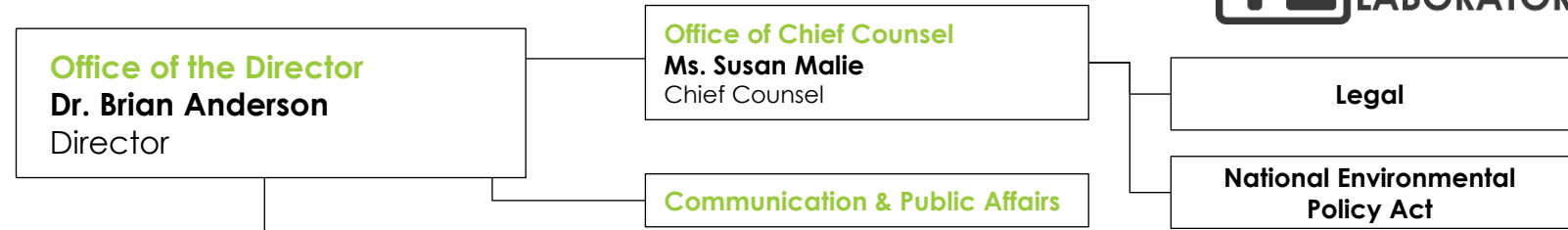
April 26, 2022



National Energy Technology Laboratory



Organizational Structure

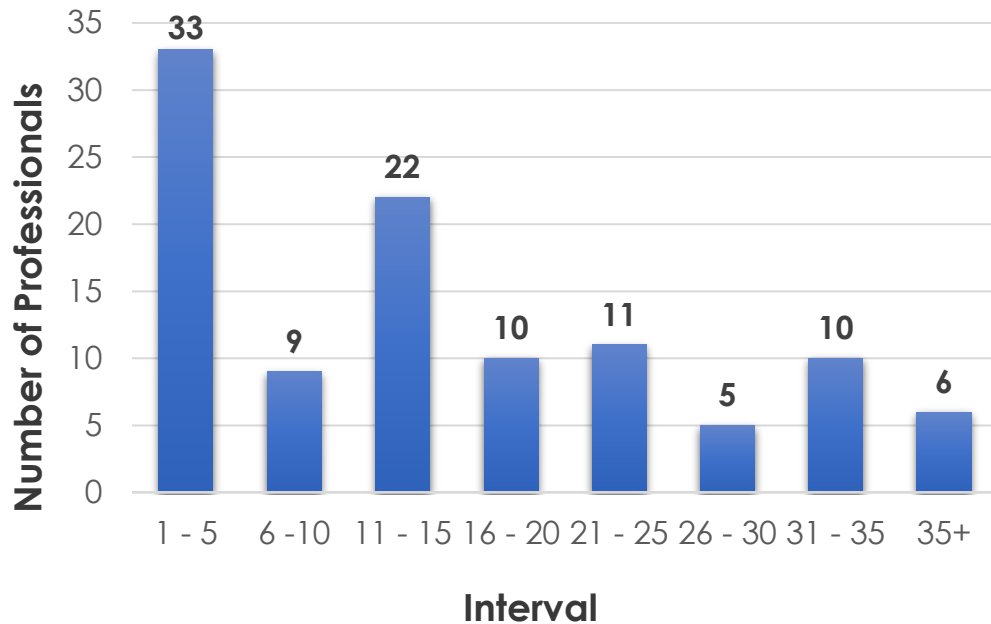


3/26/22

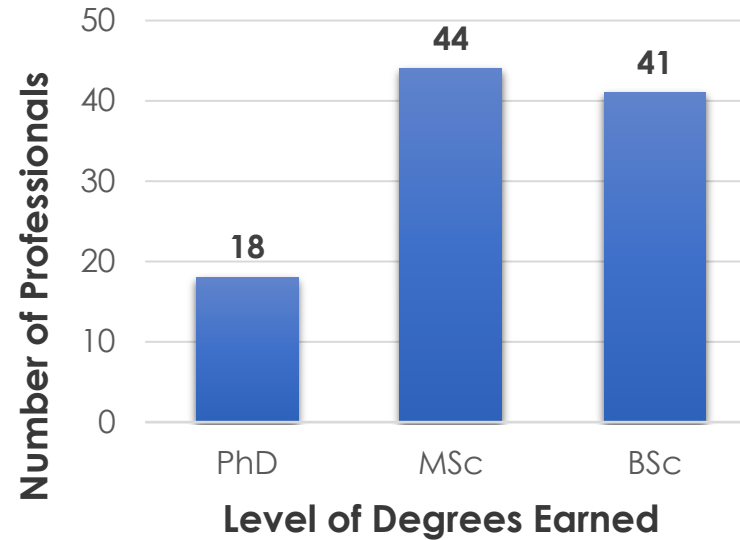
Experienced and Educated Staff

Years of Federal Service, Degrees Earned, and Disciplines

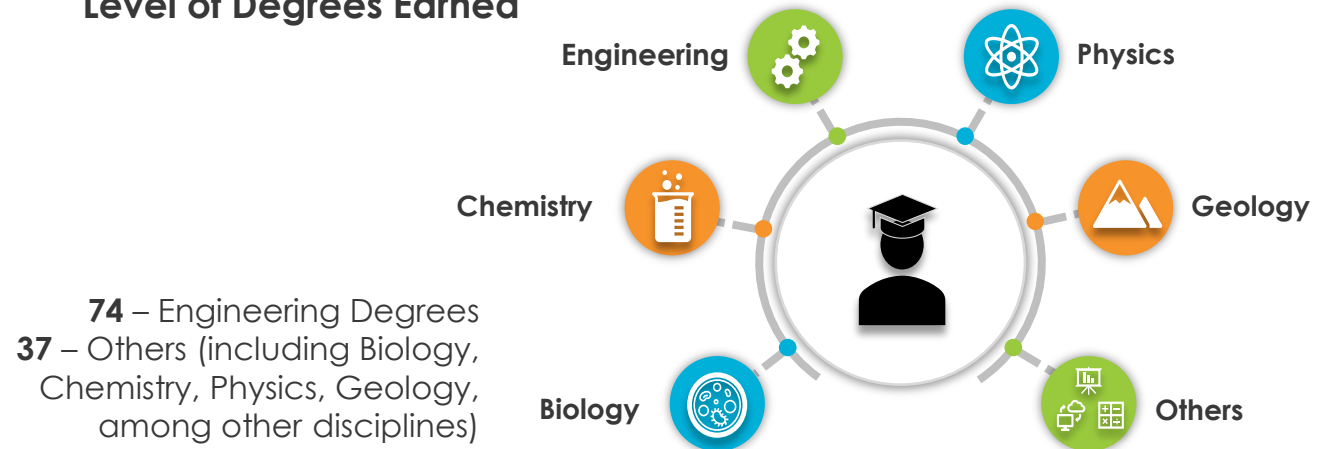
Years of Federal Service



Degrees Earned



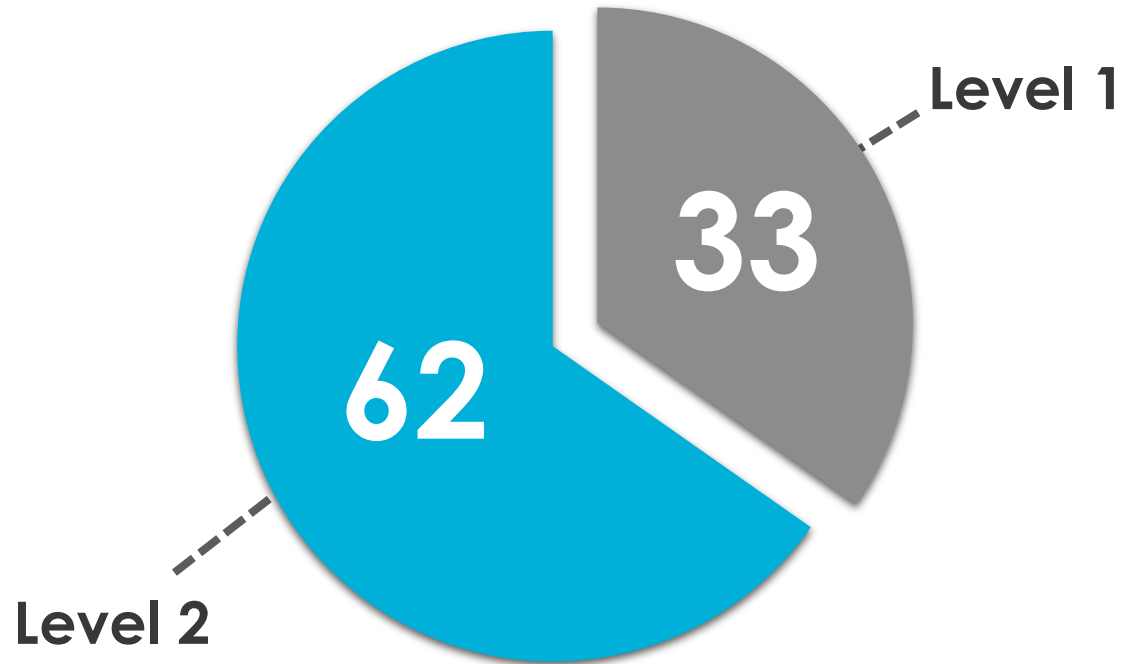
Disciplines



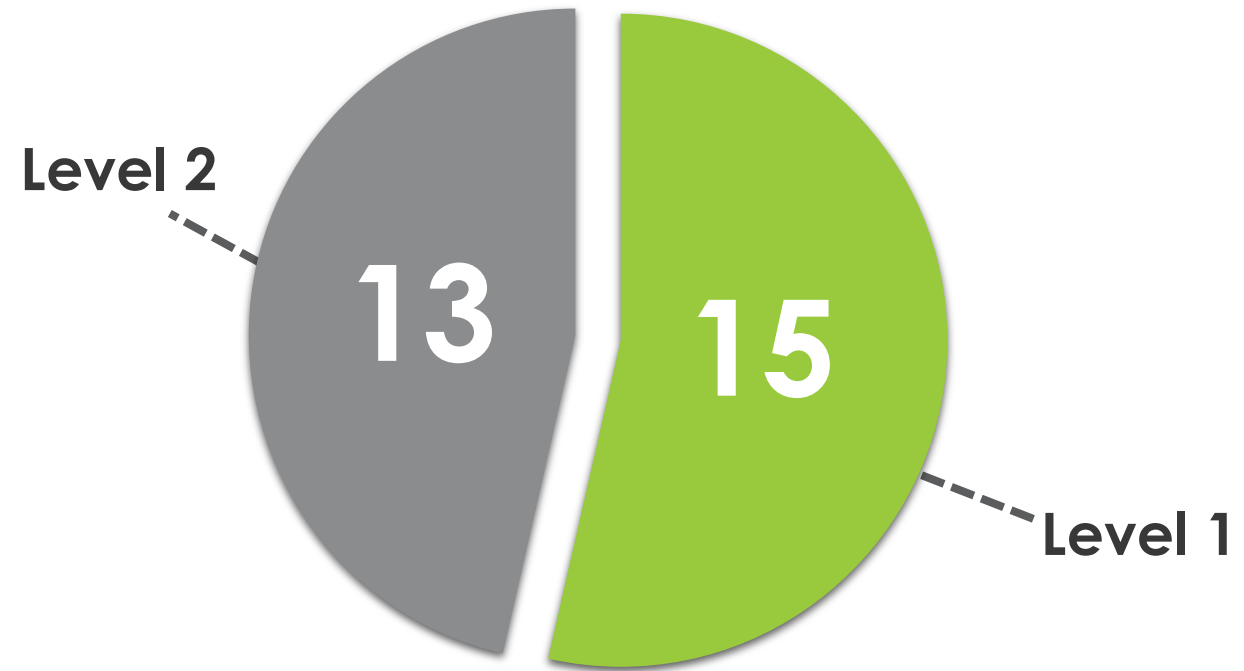
Project Management-centric KSA's

“Honing the Edge”

Technical Project Officer Certification



Contracting Officer Representative Certification



Diverse Engagement (Funding) Mechanisms

Award Type Tailored to RDD&D Goals

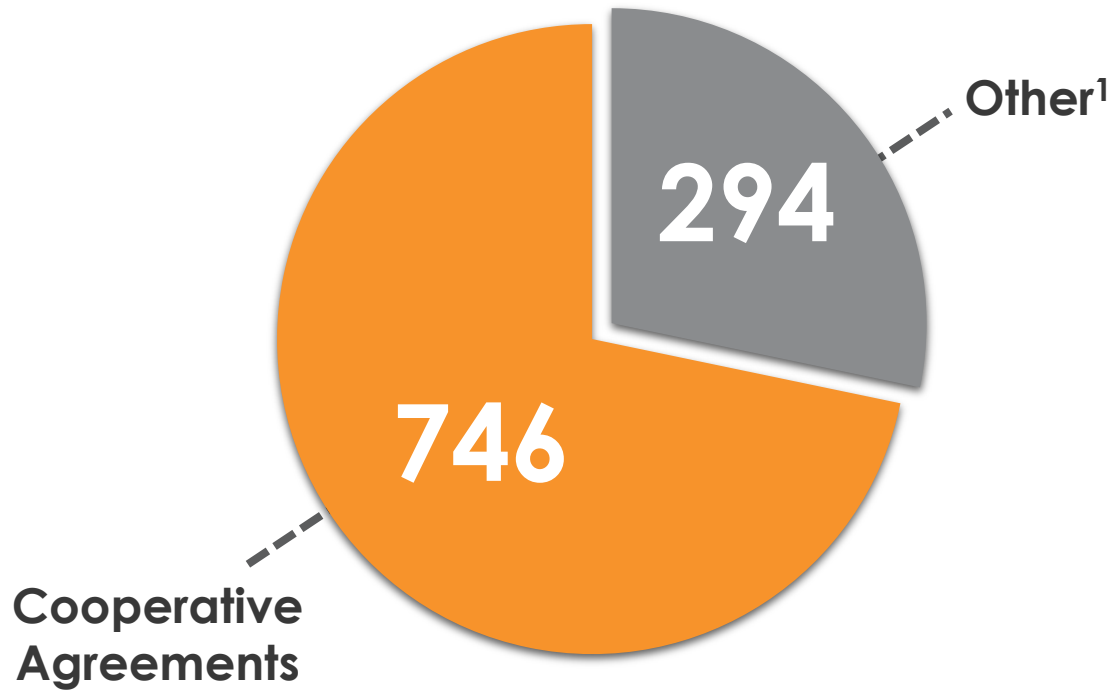
- **Financial Assistance**
 - Cooperative Agreements
 - Grants
 - *SBIR/STTR*
- **Field Work Proposals (FWP)**
- **Interagency Agreements (IA)**
- **Contracts**



Active Awards and Associated Funding

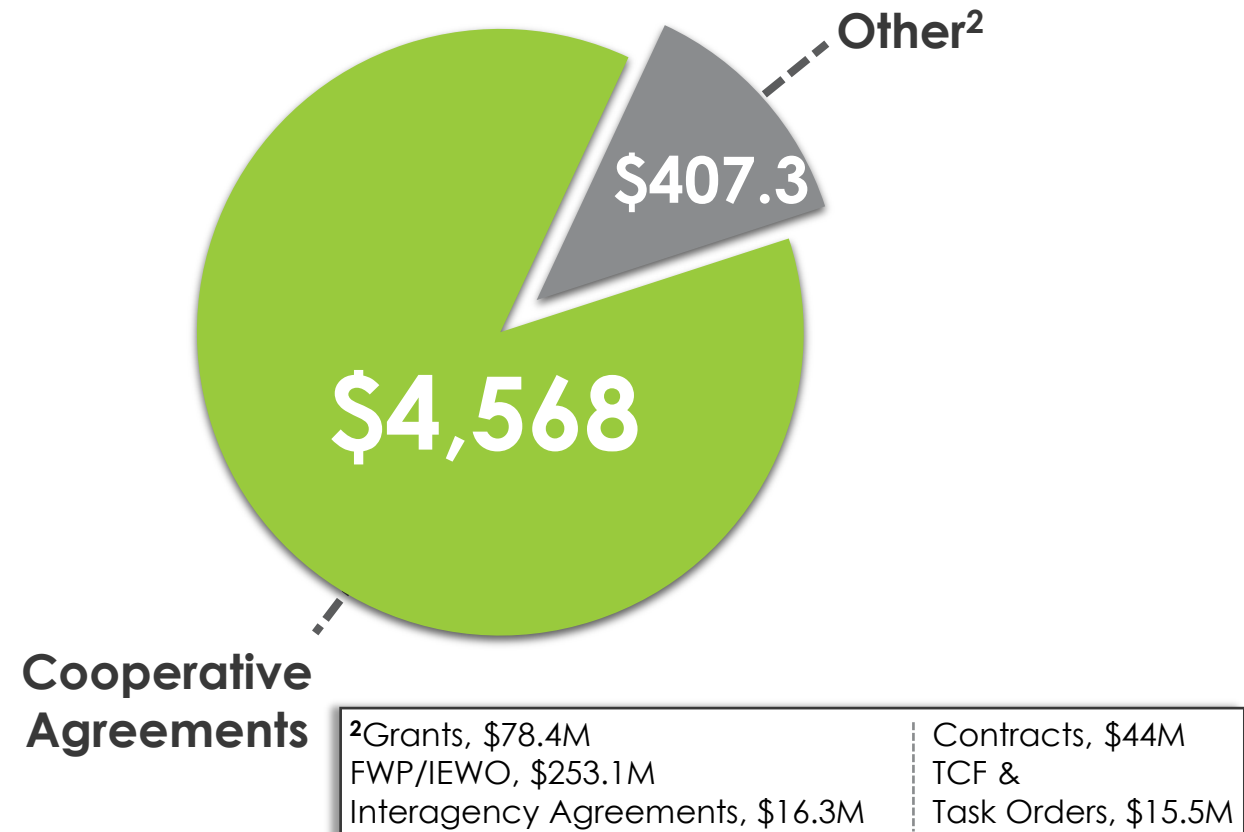
Significant Portfolio under Active Management As of [March 2022]

Number of Awards



¹ Grants, 101	Contracts, 4
FWP/IEWO, 147	TCF, 13
Interagency Agreements, 13	Task Orders, 16

Funding (\$ millions)



² Grants, \$78.4M	Contracts, \$44M
FWP/IEWO, \$253.1M	TCF &
Interagency Agreements, \$16.3M	Task Orders, \$15.5M

Pre-award PM Responsibilities

Early and Continuous Participation

Planning
(FOA Planning Document)
Goals, Objectives, Scope

Announcement(s)

**Engagement of
Selection Official**

**Communication of
Selections**



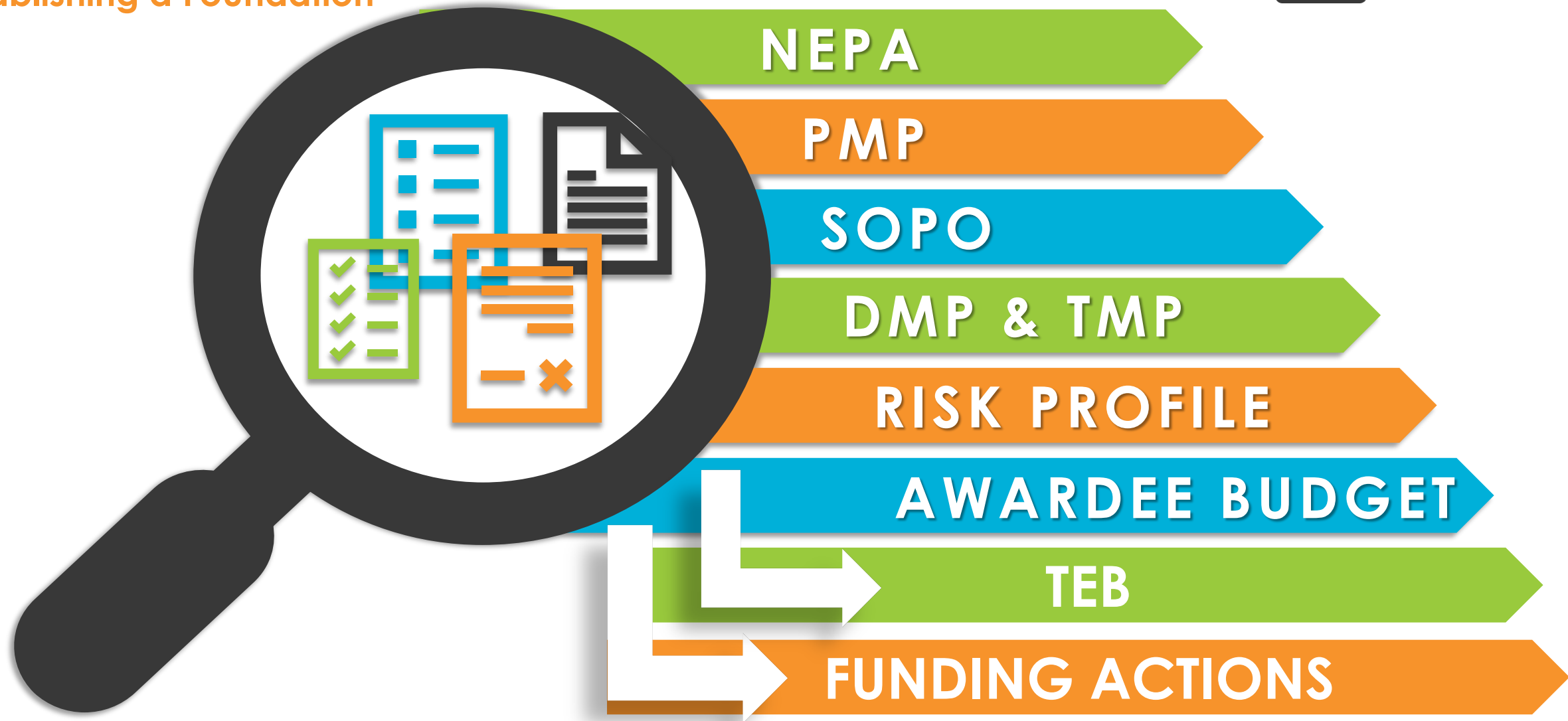
**Evaluation & Selection
Plan**

**Application Review,
Scoring & MRP
Consensus**

Selection Statement

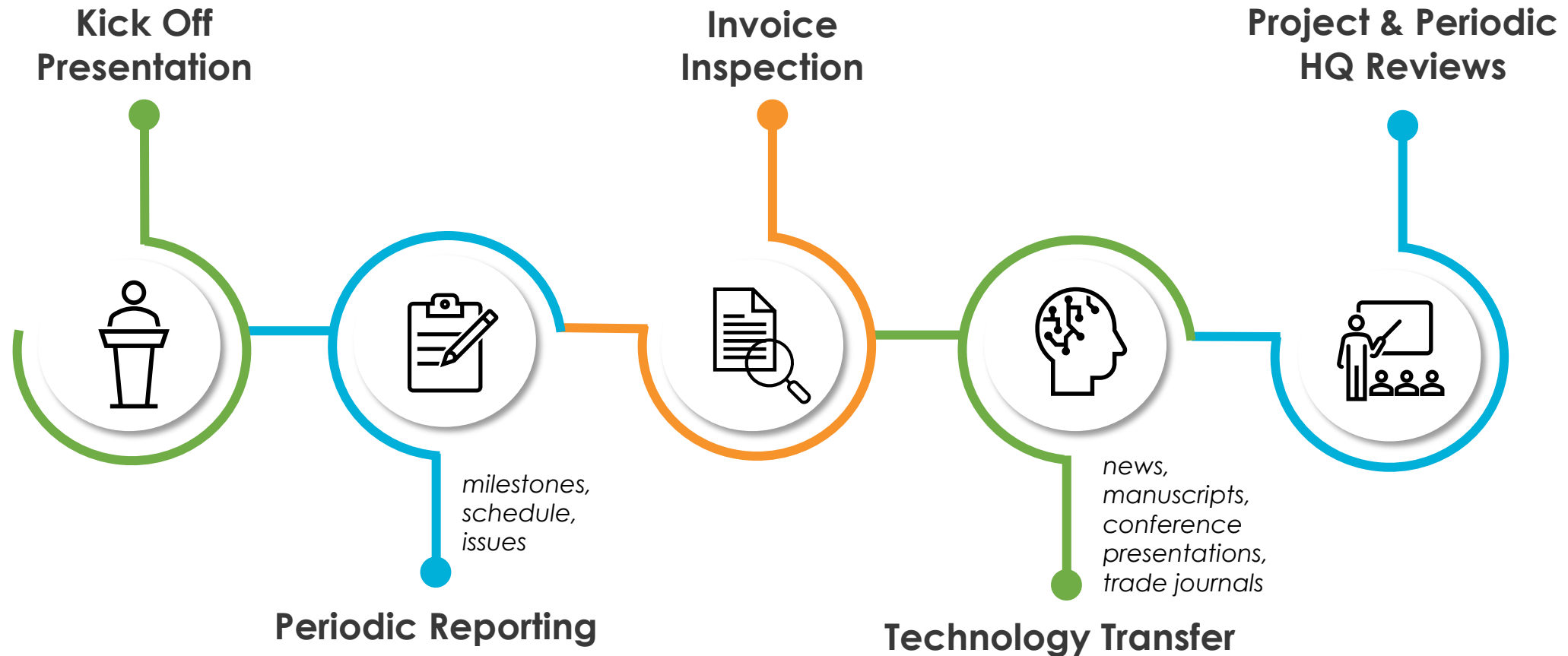
Award Initiation Documentation

Establishing a Foundation



Continuous and Robust Engagement

Communication with PI (Team) is Paramount



In Summation

The Technology Development Center @ NETL...

will deliver competent & comprehensive project management to help ensure RD&D objectives are achieved.



NETL's Bipartisan Infrastructure Law (BIL) Hub



NETL BIL Hub

- For additional information and resources regarding the BIL, visit [NETL's BIL Hub](#).

The screenshot displays the NETL BIL Hub website interface. At the top left is the NETL logo and navigation menu (About, Research and Programs, Business, Education, Library, News and Events). A search bar and social media icons are on the top right. A red dashed box highlights the 'BIL HUB' link in the navigation bar. The main content area features a large image of power lines and a section titled 'DRIVING INNOVATION AND D...'. Below this are two images: a 'SEAS Newsletter' and a clock with lightbulbs. The 'BIPARTISAN INFRASTRUCTURE LAW HUB' section contains introductory text and a list of resources: 'A Guidebook to the Bipartisan Infrastructure Law', 'Clean Energy Corps', 'DOE Applicant Portal', and 'BIL Grid Resilience Program'. A 'Solicitations & Funding Opportunities' section includes links to 'View all Bipartisan Infrastructure Law Solicitations & Funding Opportunities', 'View Fossil Energy and Carbon Management (FECM)', and 'View Energy Efficiency and Renewable Energy (EERE)'.

Project Management-centric KSA's

“Honing the Edge” – Continued



Continuous Learning Opportunities...

- **Technical Knowledge Series**
- **Annual PM Offerings**
- **FPMC Training Courses:**
 - Creating Effective Statement of Project Objectives and Project Management
 - Evaluating Project Budgets for Financial Assistance
 - Introduction to Earned Value Management
 - Financial Assistance Laws and Regulations
 - Fundamentals of NETL Project Management for Financial Assistance
 - NETL Risk Assessment and Management Process
 - Award Implementation for Financial Assistance Projects

PM Actions & Responsibilities at Award Initiation

Establishing a Foundation

