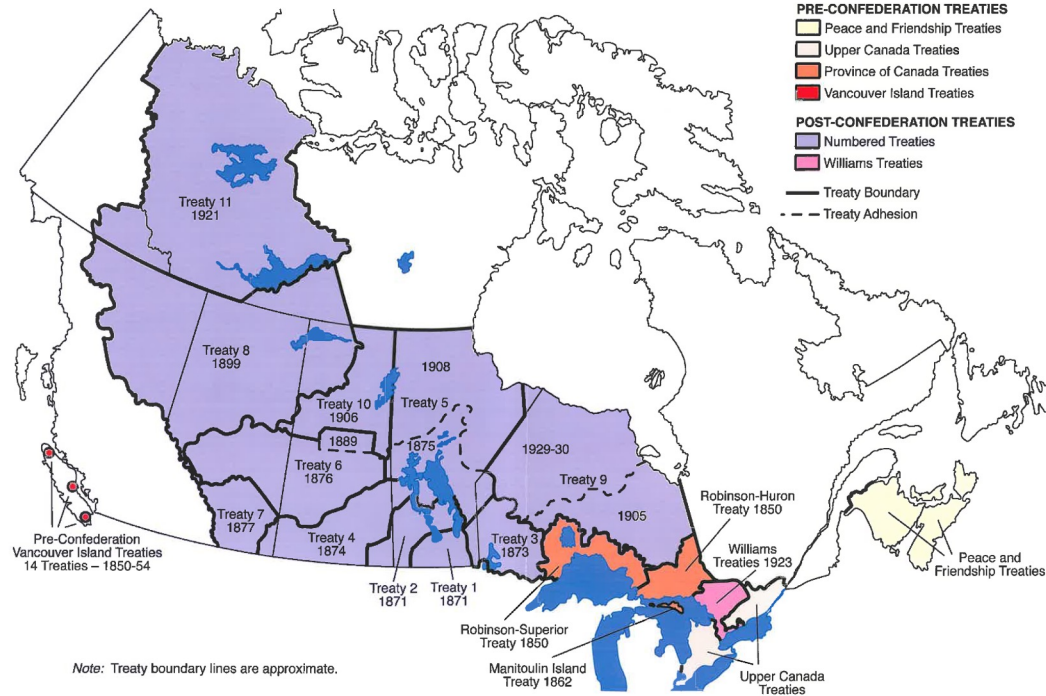


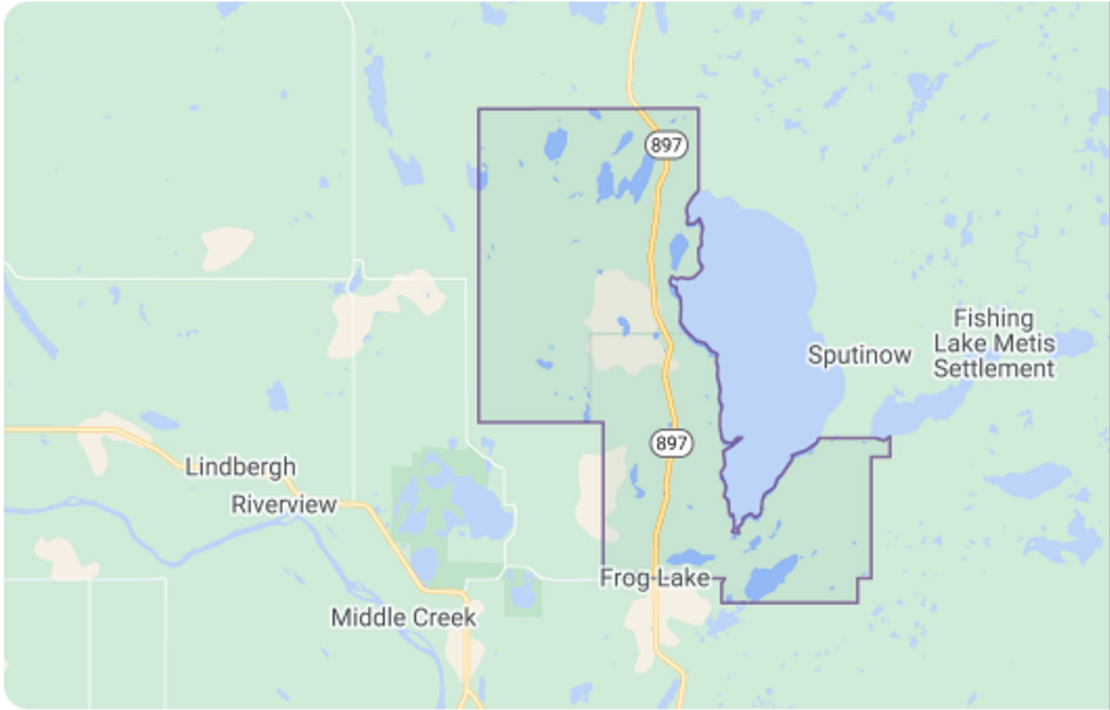
**Frog Lake First Nations
Alberta, Canada**

Treaty Lands

Location of Historical Treaty Boundaries in Canada



FROG LAKE FIRST NATION LOCATION



FROG LAKE FIRST NATION



Frog Lake First Nation
Alberta





**FROG LAKE
LEGACY ENERGY
&
ALTERNATIVE POWER
LTD.
MASTER PLAN**

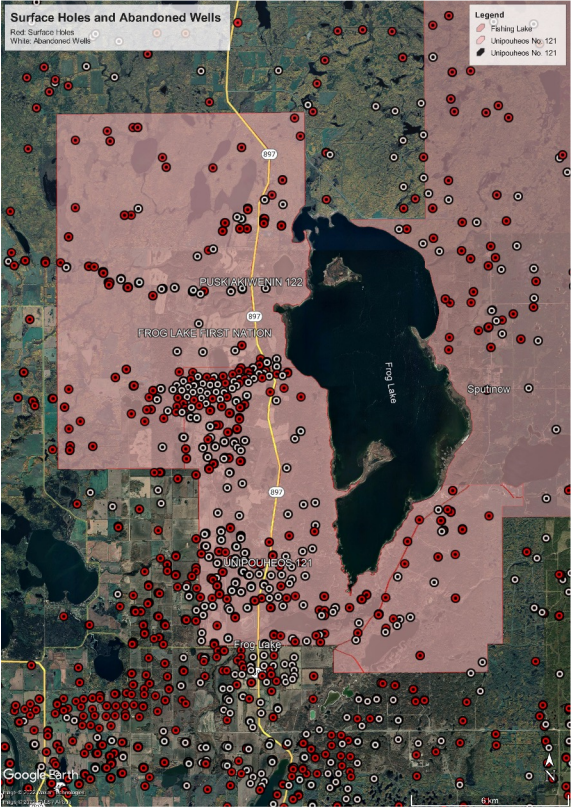
A WHOLISTIC SOVERGN INTERGENERATIONAL STRATEGIC PLAN



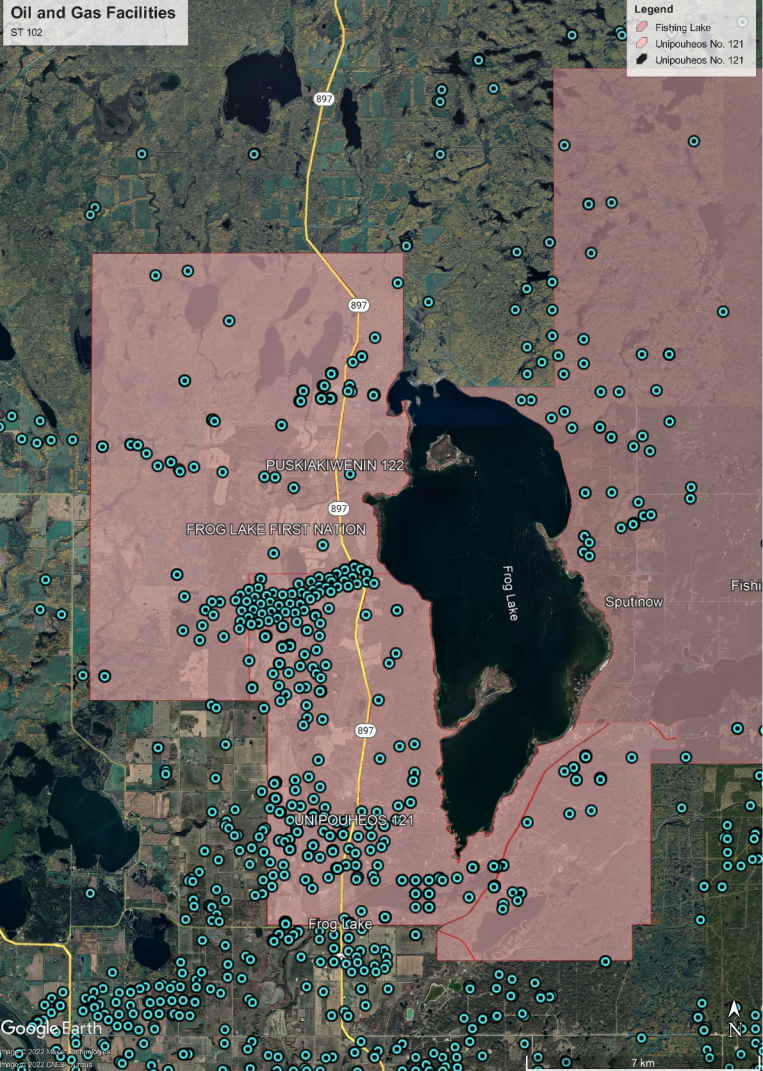
Frog Lake's Vibrant Culture



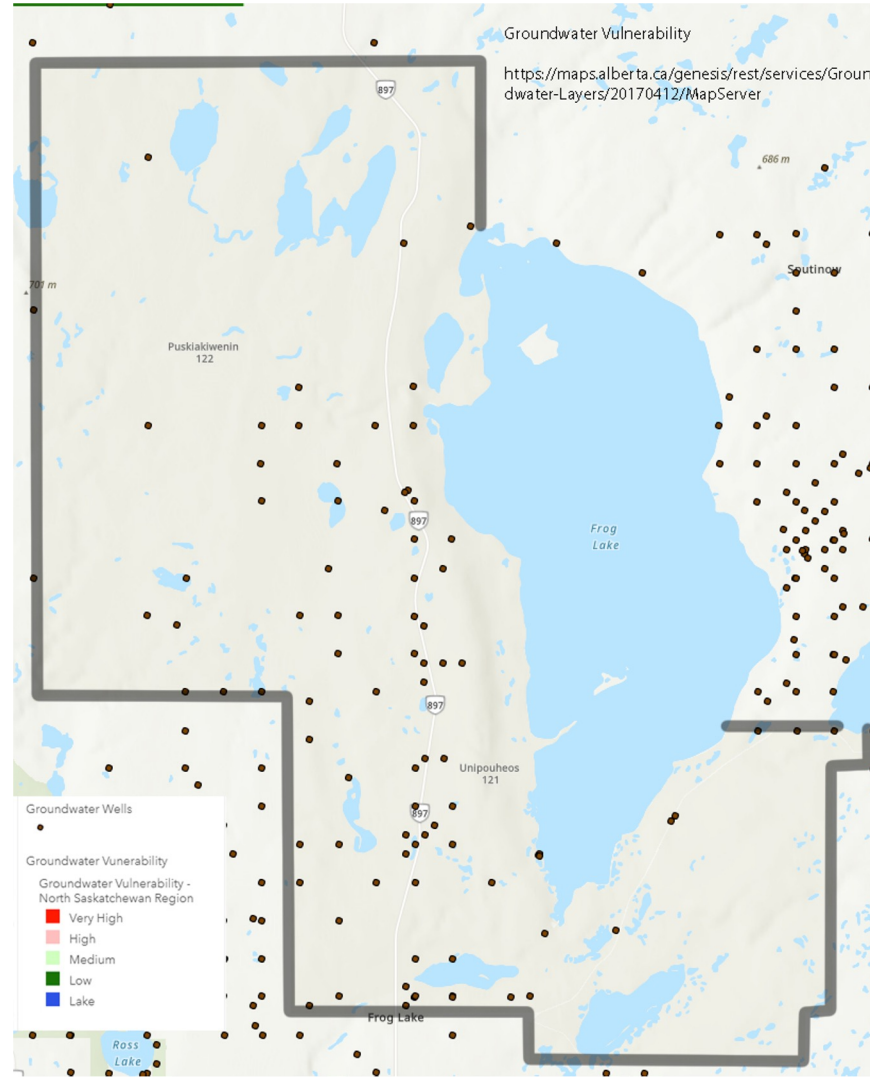
Existing Oil and Gas Facilities



Abandoned Wells



Groundwater wells & groundwater vulnerability



Frog Lake: Strategic Pillars

The following key pillars were identified as key important areas for the Nation. The strategic priorities and efficiency opportunities identified have been referenced back to these pillars to demonstrate alignment with the vision.

Our Culture, Spirituality and Identity

Embracing our identity to foster a path forward that protects Frog Lake culture, spirituality and identity. Our goal is to ensure these core elements are continued, preserved and practiced for years to come.

Governance and Administration

An effective and efficient governance will allow for responsible decision making. Our focus on effective administration is imperative to ensure success of our programs running efficiently.



Our People

Our people are our foundation. Our goal is to continue to support human development and health and wellness within our Nation.

Financial Sustainability

Diversifying current resources and extending out to new resources to build a practice of responsible spending and growing incomes from all sources.



February 2022 Master Plan Workshop

with FLFN and Partners



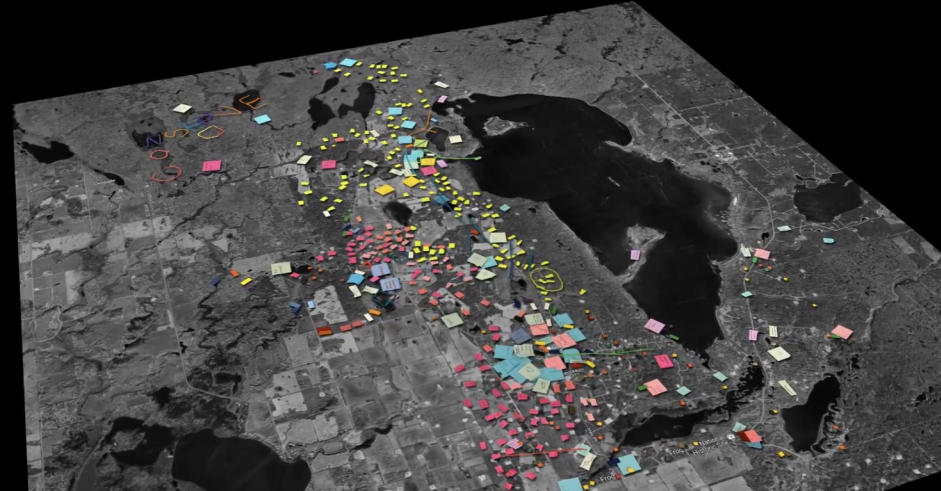
Digital Mapping

Sticky Notes

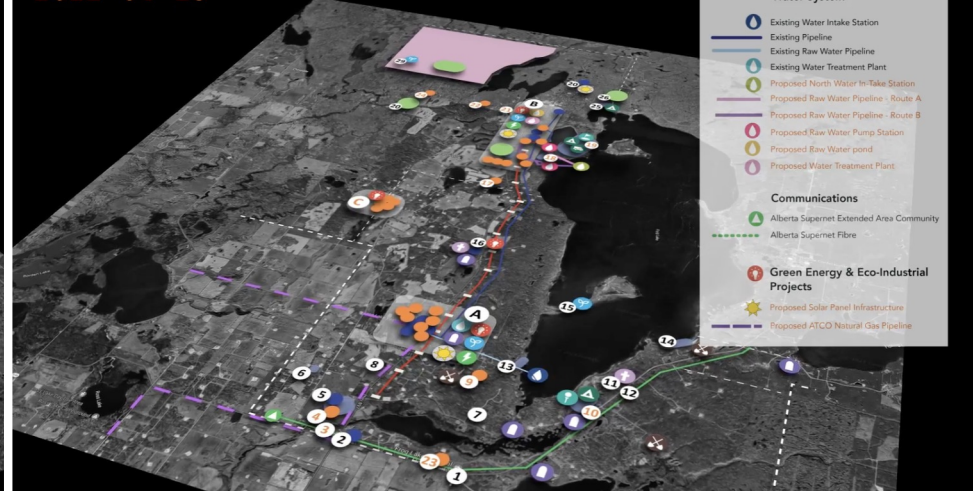


Digital Mapping

2022-04-13



2022-04-13





FROG LAKE FIRST NATION

Infrastructure Master Plan DRAFT Report

MARCH 31, 2022 • REIMAGINE.CA

Executive Summary

The Frog Lake First Nation (FLFN) Strategic Infrastructure Master Plan proposes an intergenerational plan to transform the Nation and lands from reliance on oil and gas extraction to pioneering leadership in clean energy.

As a major initiative of the FLFN, Frog Lake is a centre for Alberta's significant Cree cultural interpretation and gatherings. FLFN strives to represent and share several important elements of Cree culture: pride in culture and respect (with self-identification), family reconnection and reconciliation, the sacredness of the place, empathy, and acknowledgment of the land. The community is located a two-and-a-half hour drive east of Edmonton. It is approximately 90 km north of Lloydminster and 80 km south of Cold Lake on Secondary Highway 897. The community is easily accessible by paved roads. Nearby communities include Marwayne, Elk Point, and Heinsburg, Alberta.

The FLFN Strategic Master Plan creates a platform to integrate investments and innovations in energy, transportation, food and water sovereignty, communication, and economic sustainability for not only FLFN, but also the neighbouring Indigenous and non-Indigenous communities in Treaty Six Territory, in the region, in Alberta, and across Canada. The Master Plan initiative will collaboratively build resilience and self-sufficiency against challenges highlighted by the pandemic and recent climate-related disasters, and it will enable the transition to a green and inclusive energy future. This strategic Infrastructure Master Plan is a strategy for reclaiming the land base from oil and gas wells and turning them into assets that will help repair the scars on the land. Further, this Master Plan will pioneer technologies that will enable other First Nations to do the same.

The infrastructure developments at FLFN have been conceived to enhance access, capacity, and the quality of services to both existing and proposed facilities, offering versatile hubs of activity with the Nation's story at the centre. This will be completed through developing and upgrading the site's infrastructure through the categories of:

- Green Energy
- Transportation
- Food and Water Sovereignty
- Economic Sustainability
- Communication Infrastructure
- Current and Future Facilities



FLFN Strategic Master Plan

to build resilience and self-sufficiency

to transform the Nation and lands from reliance on oil and gas extraction to clean energy

to emphasize connection to place and to the land

to create a sustainable energy future for the next seven generations

REIMAGINE ARCHITECTS LTD. | Frog Lake First Nation - Infrastructure Master Plan Report

3



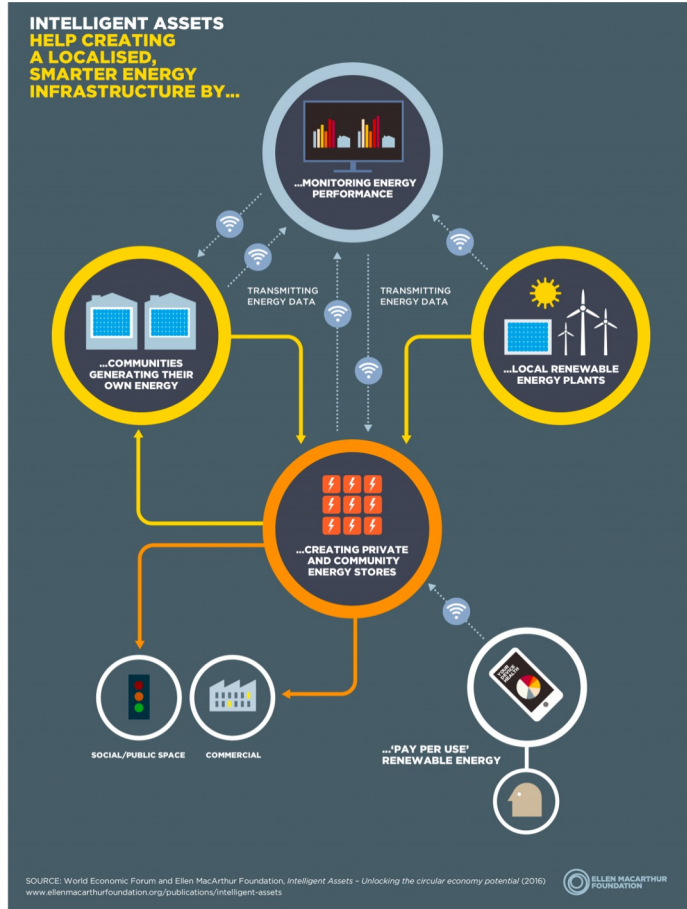
LEAP Strategic Planning





1. Solar Farm

Solar Farm – Feasibility Study and Design



Solar Farm in Alaska

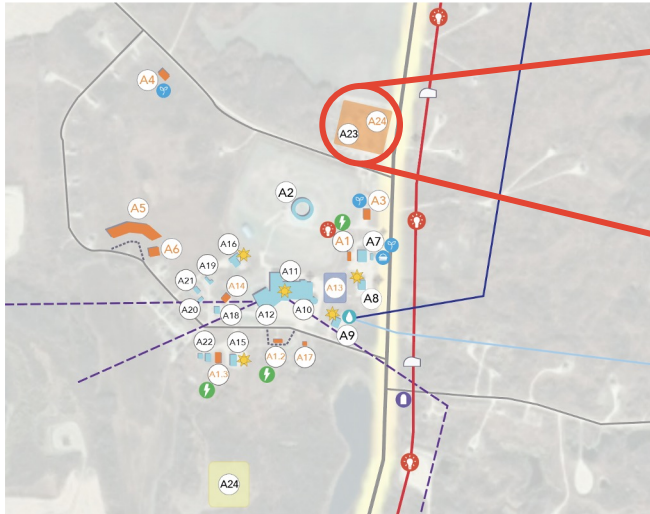
132MW Claresholm solar farm



A large, solid yellow circle is positioned on the left side of the slide, partially cut off by the edge.

2. Innovation Centre

Innovation Centre



June 2 - LEAP Meeting - Innovation Hub Planning



Net Zero Energy and Carbon buildings



re
ima
gine



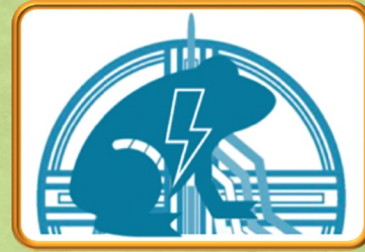
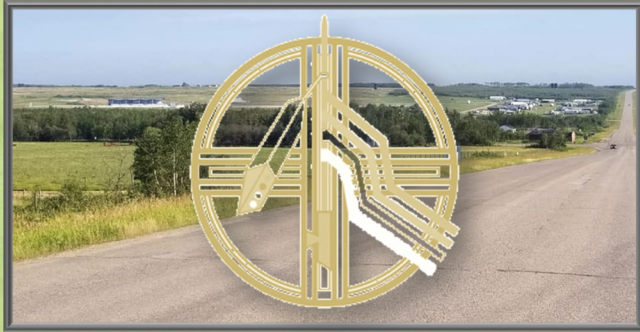
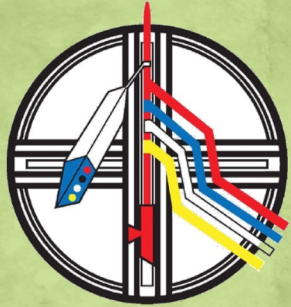
3. Tourism and Legacy Stones

Legacy Stones



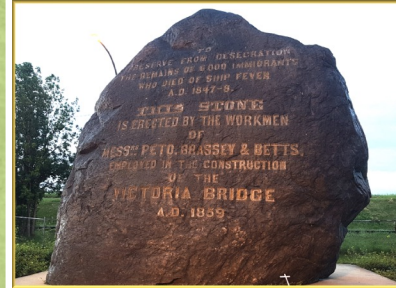
“To sit with this story, to discern the pattern, we need to begin by examining rocks”

- Tyson
Yunkaporta,
Sand Talk



Frog Lake First Nations Legacy Stones Trail Project

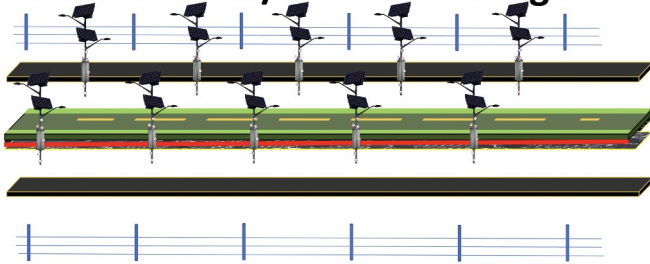
An Indigenous Perspective Preservation and Reclamation Project



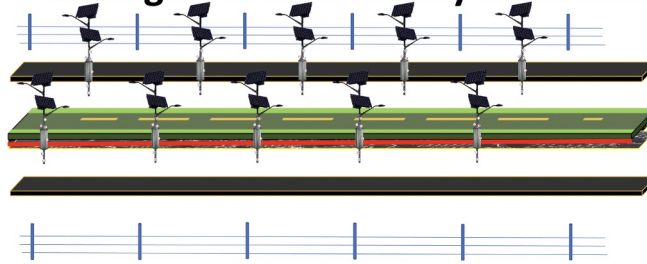
re
ima
gine

Future Facilities Greenway

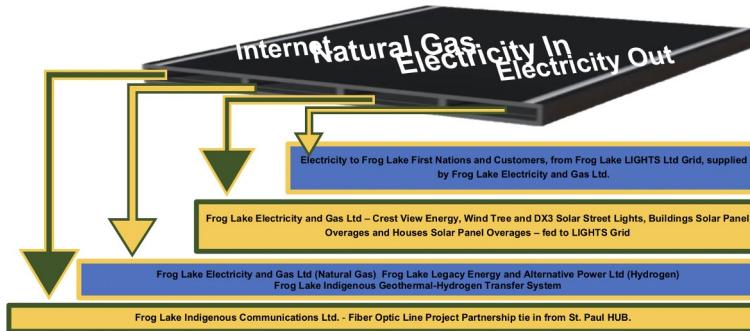
The Plastic Roads are then used to connect Solar/Wind Street Lights...



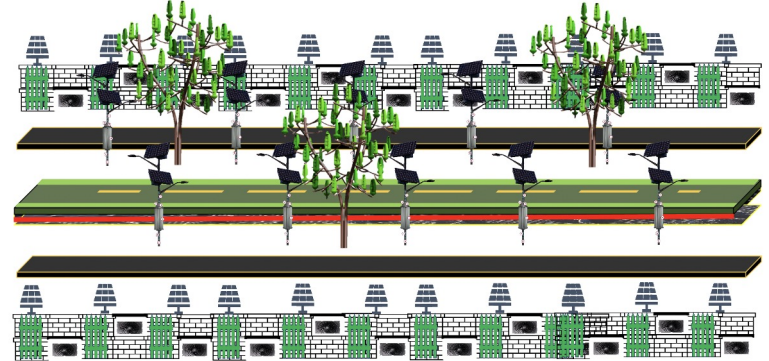
To the houses and buildings in FLFN – through the LEAP Utility Conduit...



Delivering services to the doorsteps...



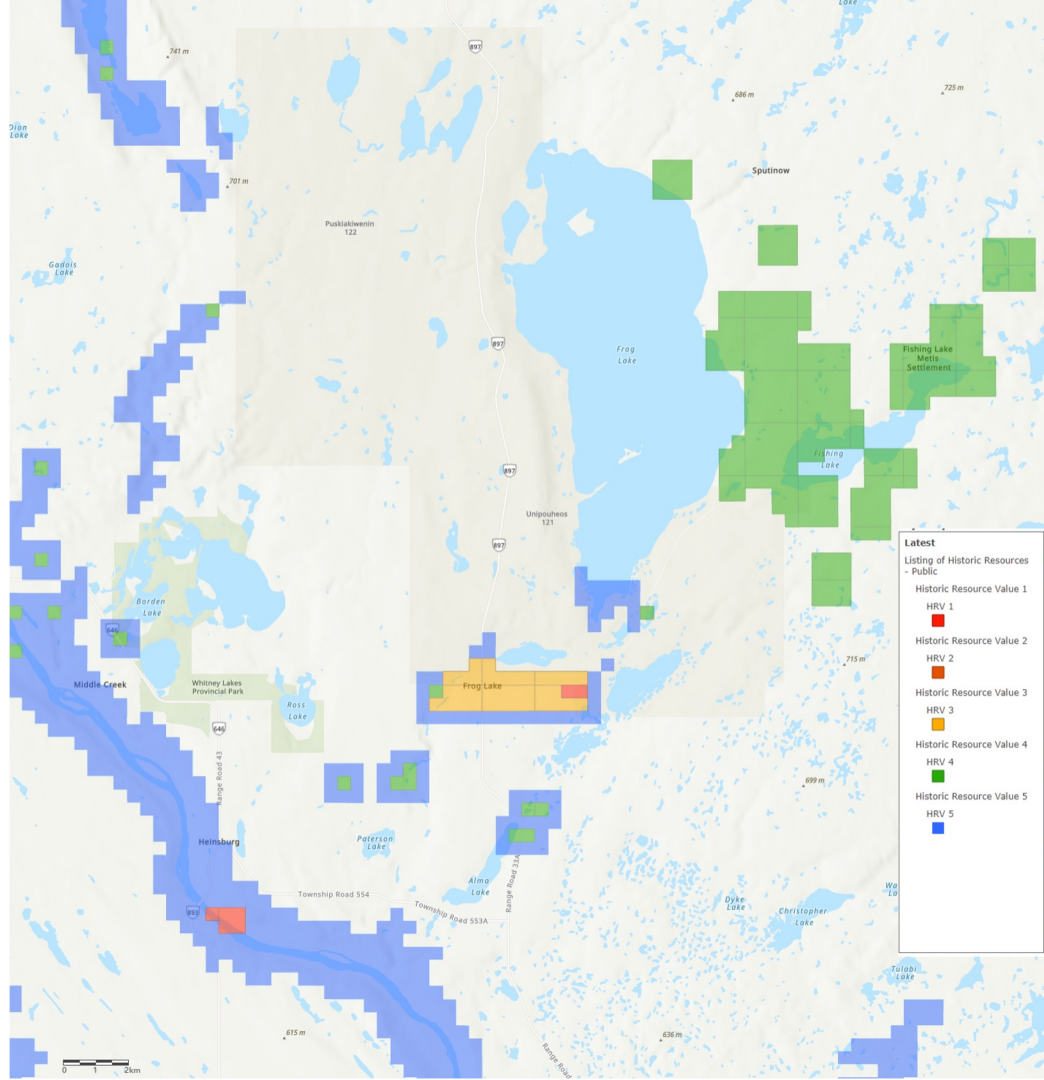
Introducing: the LEAP Green Way...



Historical Resources



Legacy Stone Trail



Latest
Listing of Historic Resources
- Public

Historic Resource Value 1	HRV 1	Red square
Historic Resource Value 2	HRV 2	Orange square
Historic Resource Value 3	HRV 3	Yellow square
Historic Resource Value 4	HRV 4	Green square
Historic Resource Value 5	HRV 5	Blue square



4. Hydrogen

Canadian Hydrogen Convention – April 26–28



Frog Lake First Nations
**LEGACY ENERGY &
ALTERNATIVE POWER**



Pengrowth Energy Corporation


PUSKIAKIWENIN
122

FROG LAKE
FIRST NATION

UNIPOUHEOS
121

Frog Lake

 **20 min**
23.5 km

 **15 min**
21.1 km

Lindbergh

Windsor Salt

646

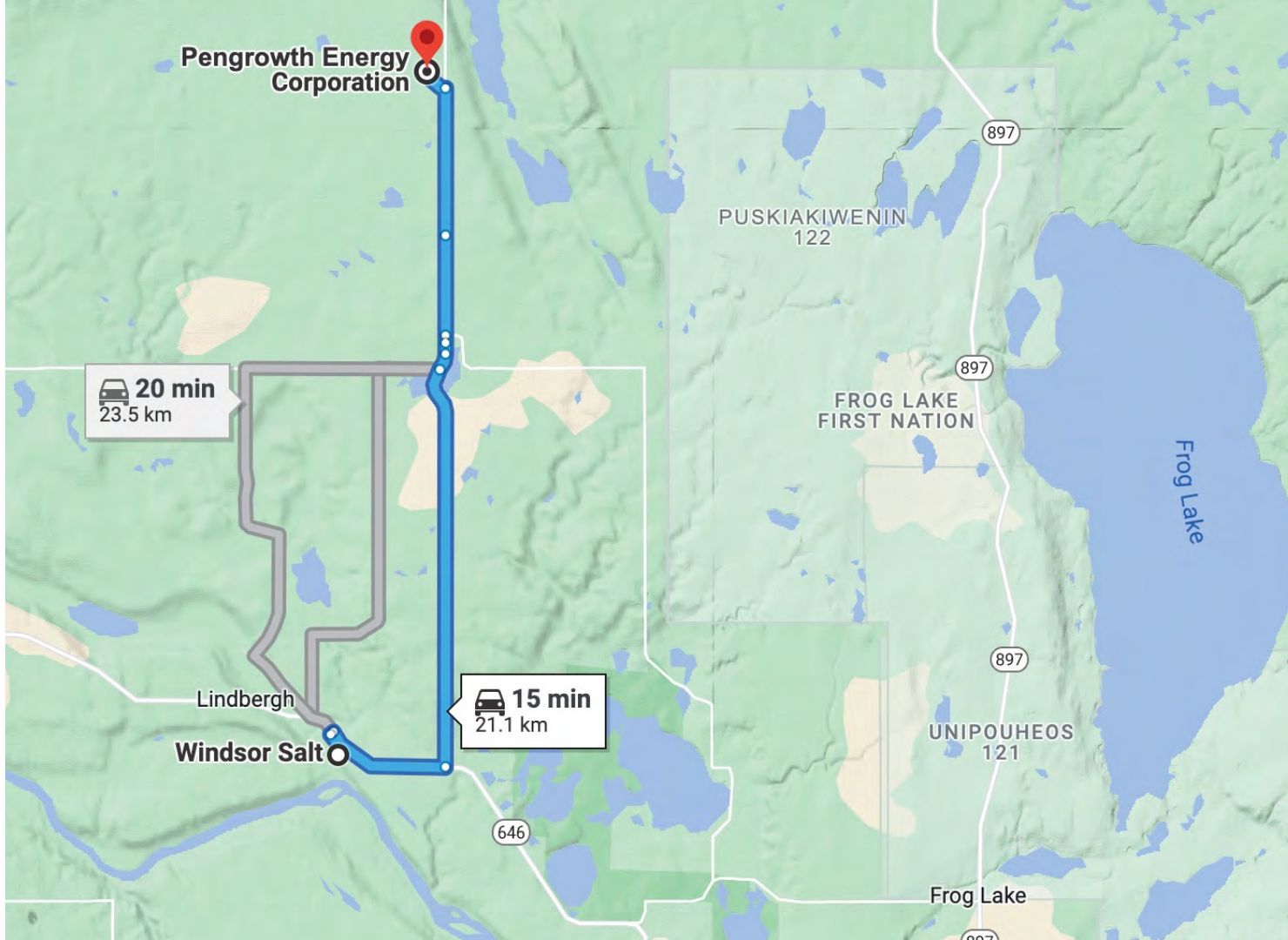
897

897

897

Frog Lake

897



REGIONAL ECOSYSTEM ACCELERATOR:

A CARBON, HEMP, HYDROGEN HUB

Pengrowth Energy
Corporation

20 min
23.5 km

15 min
21.1 km

Lindbergh

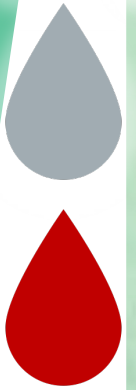
Windsor Salt

REACH2 HUB

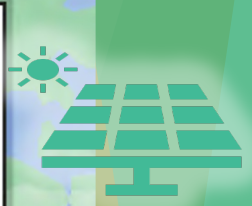
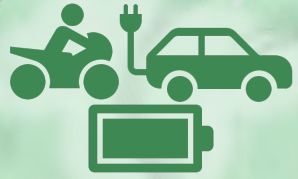


15 min
21.1 km

20 min
23.5 km



Pengrowth Energy
Corporation



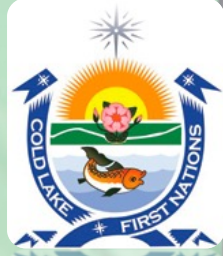
Lindbergh

Windsor

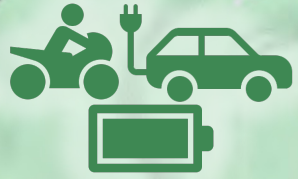
REACH2 HUB



15 min
21.1 km

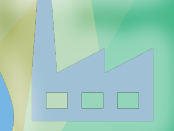


20 min
23.5 km

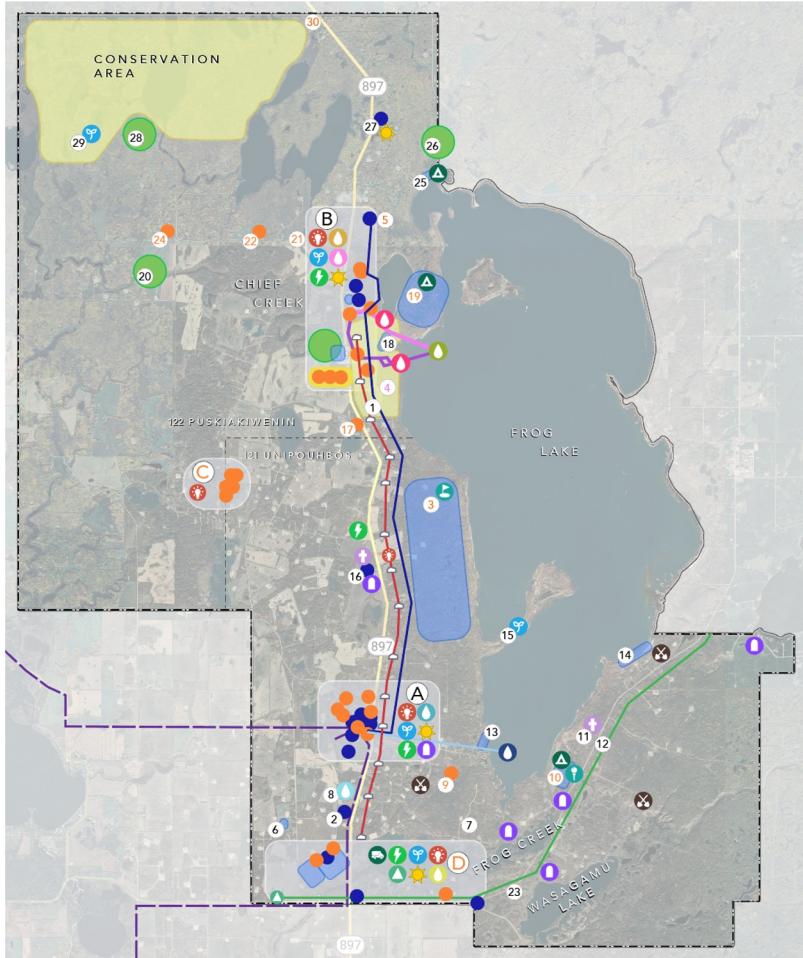


Lindbergh

Windsor



Overall Map of Frog Lake First Nation



Site Elements

- 1 Sundance Grounds (North)
- 2 Old Powow Grounds (Abandoned)
- 3 Potential Golf Course and Resort
- 4 Land of the Little People
- 5 Proposed Elder's Lodge and Care Facility
- 6 Dog Sled Training
- 7 Smoke Hill
- 8 Waste Lagoon
- 9 Potential Carbon Hub/Plant
- 10 Potential Campground & Golf Driving Range
- 11 Former Church (Burnt Down)
- 12 Trenches from Frog Lake Rebellion
- 13 Swim Beach
- 14 Snake Beach
- 15 Vegetation Blueberry Picking
- 16 Roman Catholic Church (Not in Use)
- 17 Weather Station TCCF
- 18 Kayak Beach
- 19 Potential Camp Site
- 20 Consistent Beaver Activity
- 21 Potential Bridge
- 22 Westlake New Drill
- 23 Lay Down Yard - Site Rehabilitation Program
- 24 Potential Carbon Hub/Plant
- 25 Camp Site
- 26 Consistent Beaver Activity
- 27 Old Landfill & Waste Transfer Station
- 28 Buffalo Ranch
- 29 Medicinal Plants
- 30 Potential AI Security Project

Font

Black Existing Infrastructure
 Orange Potential/Proposed Infrastructure

Built Form

Blue Existing Building
 Orange Potential/Proposed Building
 Light Blue Existing Building (Zoom-In)
 Orange Potential/Proposed Building (Zoom-In)

Property

--- Border Between Nations 122 Puskiakiwenin & 121 Unipouheos
 - - - Frog Lake First Nation Border

Roads, Pathways, & Transportation

Red line with white cap Proposed Legacy Stones Trail Project
 Grey line Main Road Network
 Dashed grey line Potential Road Network
 Green lightning bolt Proposed Electric Bus Stops/Hubs

Agriculture & Food

Blue circle with fork and knife Fast Food

Water System

Blue circle with water drop Existing Water Intake Station
 Blue line Existing Pipeline
 Light blue line Existing Raw Water Pipeline
 Teal circle with water drop Existing Water Treatment Plant
 Teal circle with water drop Waste Lagoon
 Green circle with water drop Proposed North Water In-Take Station
 Pink line Proposed Raw Water Pipeline - Route A
 Purple line Proposed Raw Water Pipeline - Route B
 Pink circle with water drop Proposed Raw Water Pump Station
 Yellow circle with water drop Proposed Raw Water pond
 Pink circle with water drop Proposed Water Treatment Plant
 Green circle with water drop Potential Water Lift Station

Legend

Green circle Existing Wildlife Activity
 Blue circle Parks and Recreation Activity
 Yellow circle Potential Bus, University, and Hospital Hub
 Light green circle Proposed Conservation Area
 Green triangle with tent Campground
 Green circle with tent RV Campground
 Green circle with golf club Potential Golf Course
 Green circle with golf club Potential Golf Driving Range
 Black circle with 'X' Gravel Pits
 Purple circle with cross Grave Sites
 Purple circle with cross Church
 Purple circle with 'P' Parking

Communications

Green triangle with 'A' Alberta Supernet Extended Area Community
 Green dashed line Alberta Supernet Fibre

Green Energy & Eco-Industrial Projects

Yellow star Proposed Solar Panel Infrastructure
 Purple line Proposed ATCO Natural Gas Pipeline





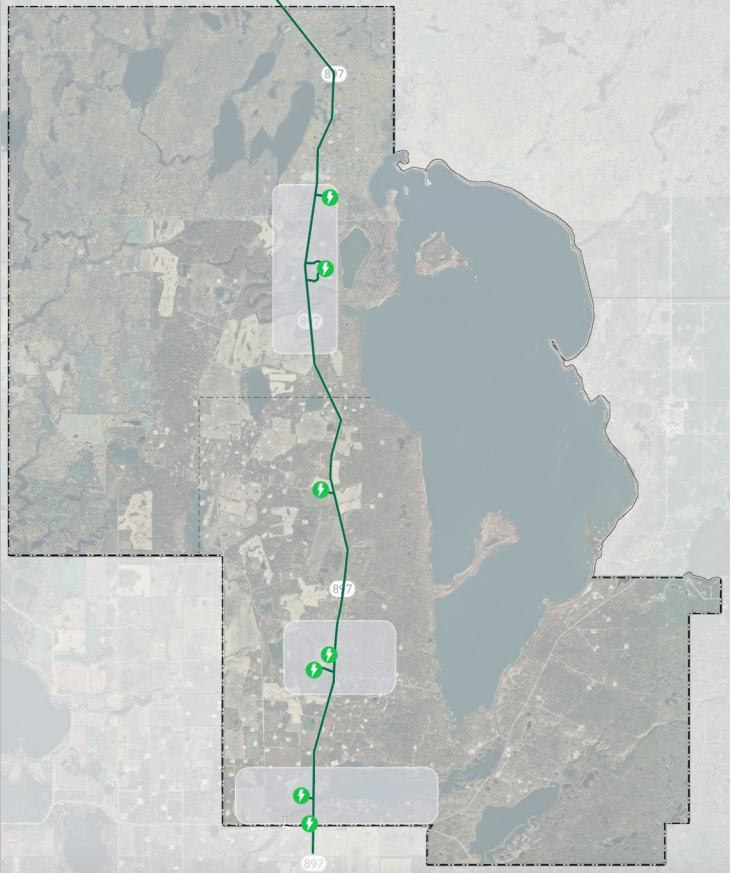
5. Future Capital Projects

Food Security

Three ambitions for cities to build a circular economy for food



RTSF – Capital Project submission



Regional Bus System Connecting Frog Lake First Nations to Lloydminster



Industrial Hemp/Hempcrete

Alberta Industrial Hemp Strategic Plan

- ✓ Renewable, fast growing plant
 - ✓ Sequesters 5 times or more CO₂ than the equivalent acre of forest
 - ✓ Hemp markets are rising in N. America
 - ✓ Advancing whole plant utilization
 - ✓ USA - not a legal commercial crop
- **AGRONOMY**
 - **HARVESTING EQUIPMENT** – Seed, Fibre, CBDs
 - **HEMP PROCESSING** – Decortication, Dehulling, Extraction
 - **MARKET DEVELOPMENT** and **ACCESS**
 - **REGIONAL** and **INDIGENOUS CLUSTERS**



Alberta





Questions?



re
ima
gine