

Wyoming CarbonSAFE: Accelerating commercial deployment

*Regional Carbon Management, Applicant Education
Workshops*

April 26th, Salt Lake City

Scott Quillinan

scottyq@uwyo.edu



UNIVERSITY
OF WYOMING

School of
Energy Resources

THE WORLD NEEDS MORE COWBOYS.

Disclaimer

Acknowledgment: This portion of the presentation is based upon work supported by the Department of Energy under Award Number DE-FE0031624 and DE-FE0031624

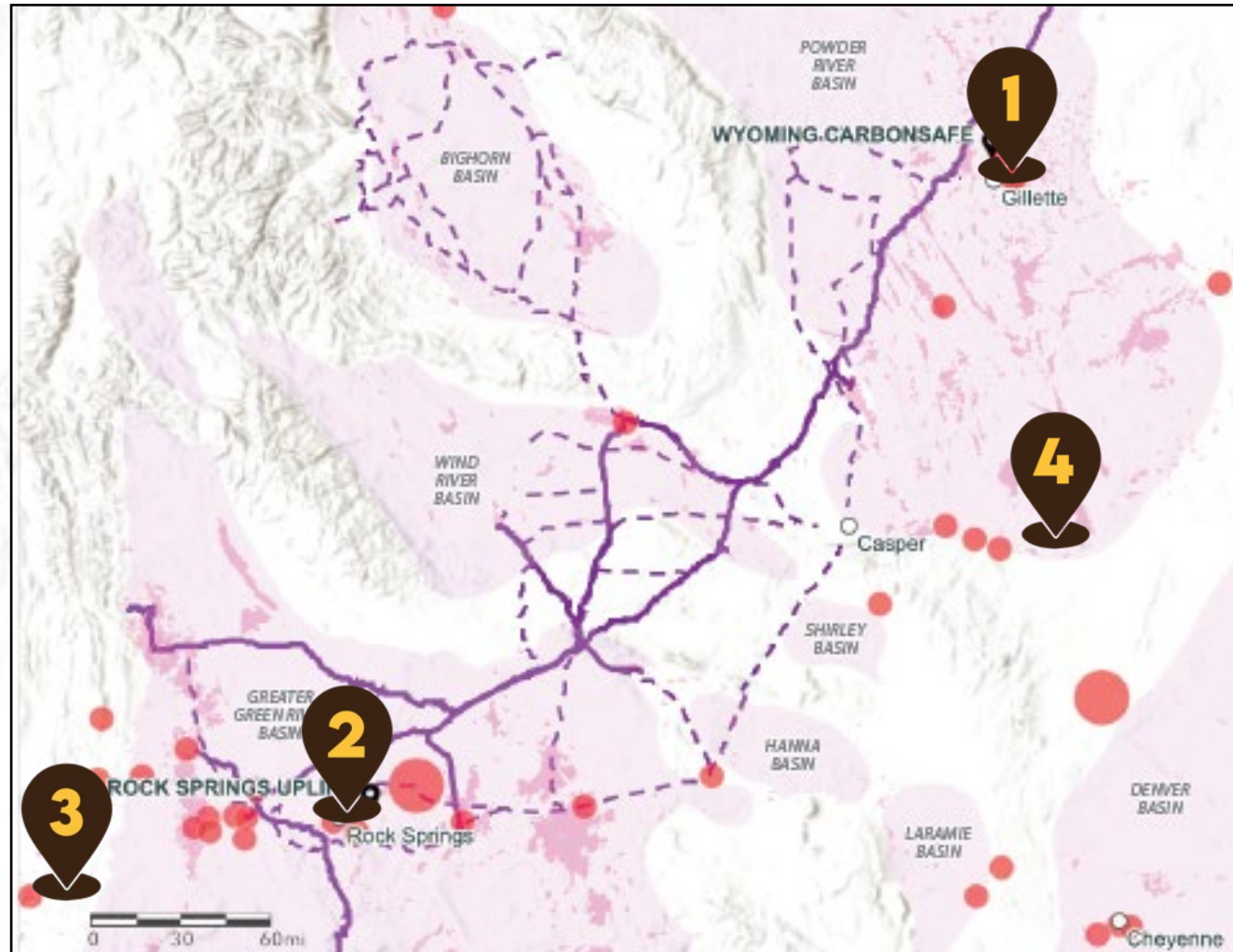
Disclaimer: This portion of the presentation was prepared as an account of work sponsored by an agency of the United States Government. Neither the United States Government nor any agency thereof, nor any of their employees, makes any warranty, express or implied, or assumes any legal liability or responsibility for the accuracy, completeness, or usefulness of any information, apparatus, product, or process disclosed, or represents that its use would not infringe privately owned rights. Reference herein to any specific commercial product, process, or service by trade name, trademark, manufacturer, or otherwise does not necessarily constitute or imply its endorsement, recommendation, or favoring by the United States Government or any agency thereof. The views and opinions of authors expressed herein do not necessarily state or reflect those of the United States Government or any agency thereof.



UWyo/SER CCUS Projects

Carbon Capture and Storage (CCS) projects in Wyoming

1. Wyoming CarbonSAFE Project at Dry Fork Station
2. Rock Springs Uplift-Regional CCUS Hub
3. Depleted Gas Fields (Transition of fossil assets)
4. Project Blue Bison (Blue Hydrogen)
5. Plains CO₂ Reduction Partnership (PCO₂R)



CO₂ Emissions Sources

● > 6 to 12 (MMT/year)

● 0 to 6 (MMT/year)

Geologic Formations with CO₂ Storage Potential

■ Oil and Gas Fields

■ Basins

CO₂ Pipelines

— Existing Pipelines

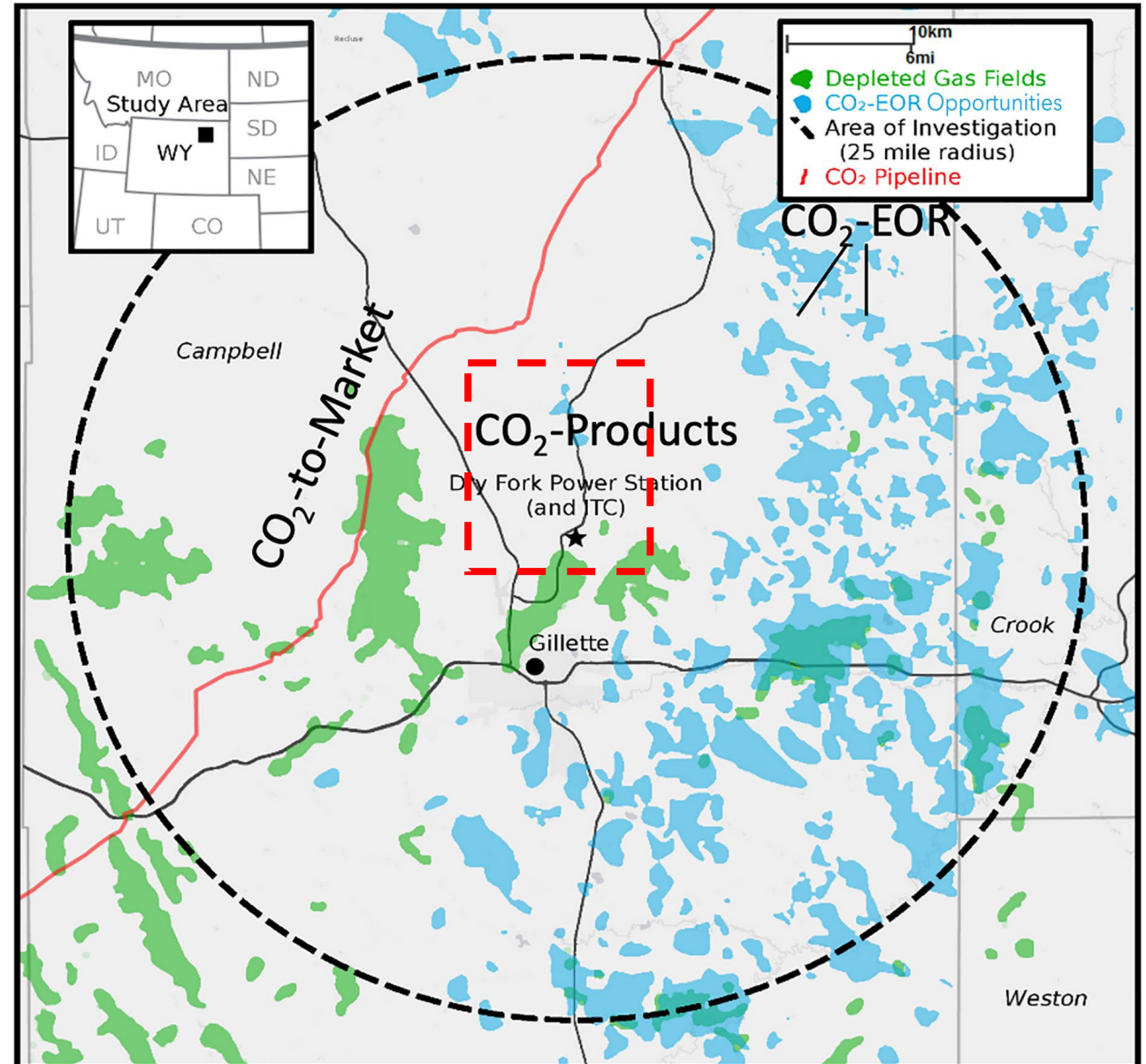
- - - WPCI Pipeline Corridors



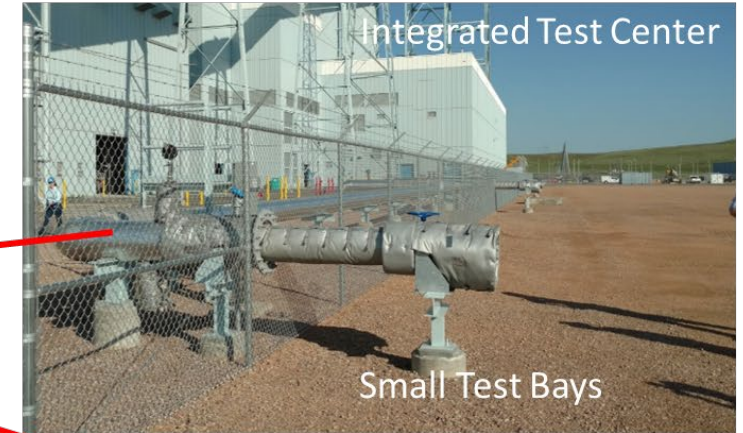
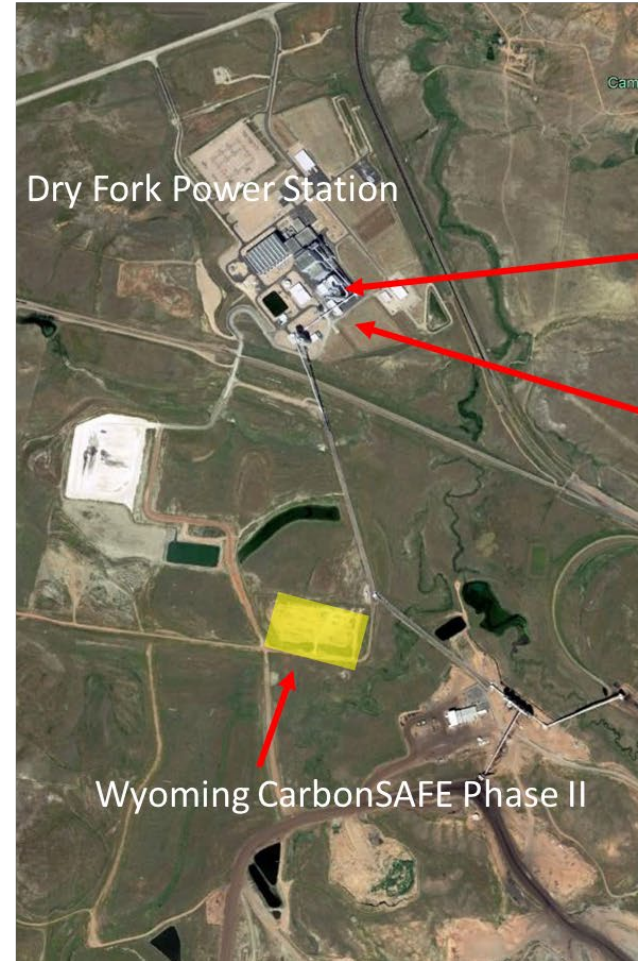
School of
Energy Resources

The Wyoming CarbonSAFE Storage Hub

- Located within Carbon Valley, the site of:
 - Existing intrastate CO₂ transportation network
 - Multiple utilization industries
 - Carbon to products
 - CO₂-EOR
 - Experienced carbon/energy workforce
 - Multiple CO₂ point sources
- Wyoming statewide CCUS support:
 - CO₂ friendly legal framework
 - Class VI primacy
 - Long-term CCUS liability fund
 - Educated and supportive public
 - Burgeoning CCUS industry



Wyoming CarbonSAFE: CO₂ capture and storage innovation

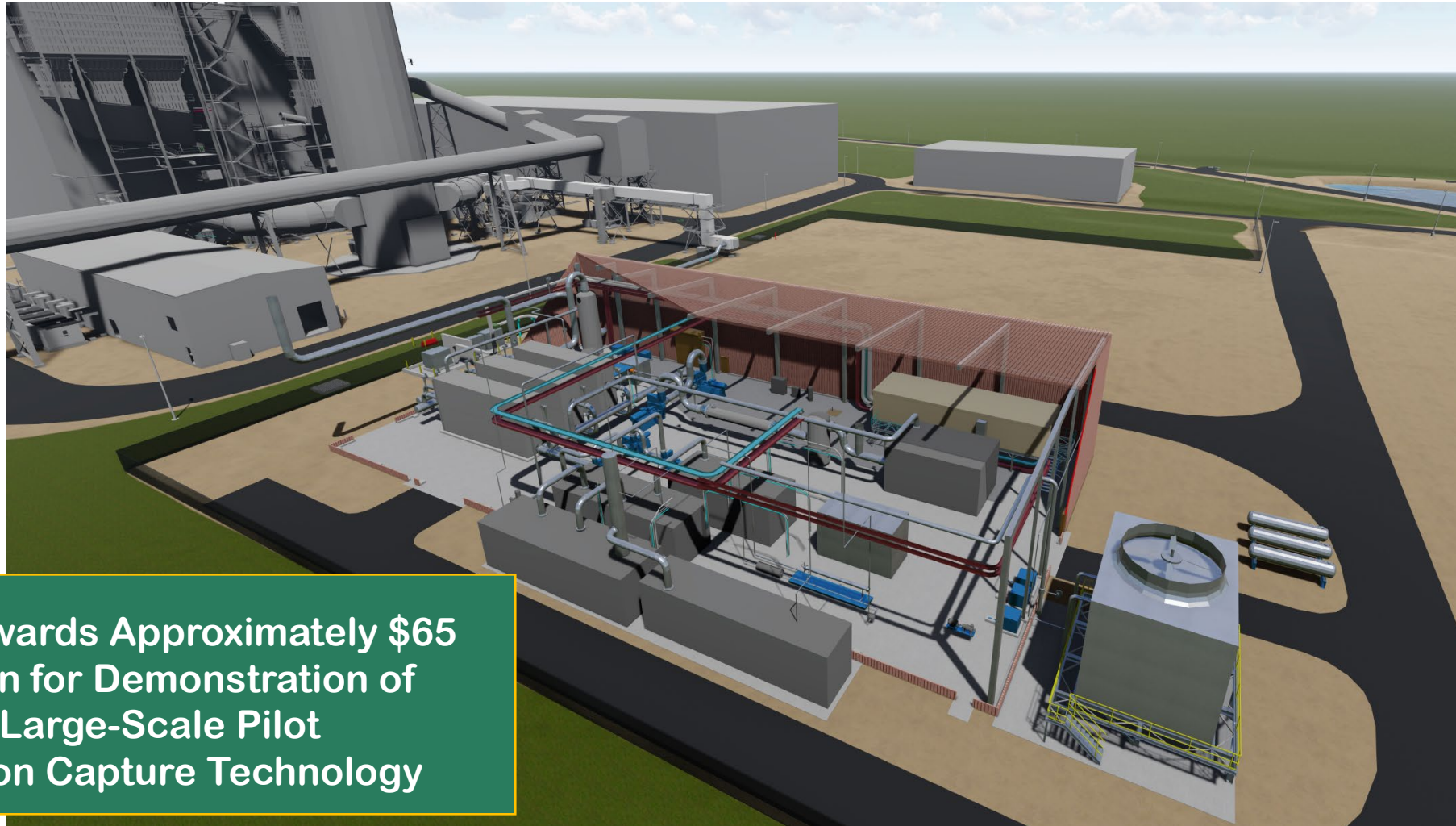


Dry Fork Station

- ✓ Built in 2007
- ✓ 385 MW Power Plant
- ✓ 3.3 Million tons of CO₂/year
- ✓ ZERO H₂O discharge
- ✓ Newest, cleanest, PC plant

Carbon Capture Program at the ITC

Membrane Technology Research FEED And Large-Scale Capture Pilot



DOE Awards Approximately \$65 Million for Demonstration of Large-Scale Pilot Carbon Capture Technology

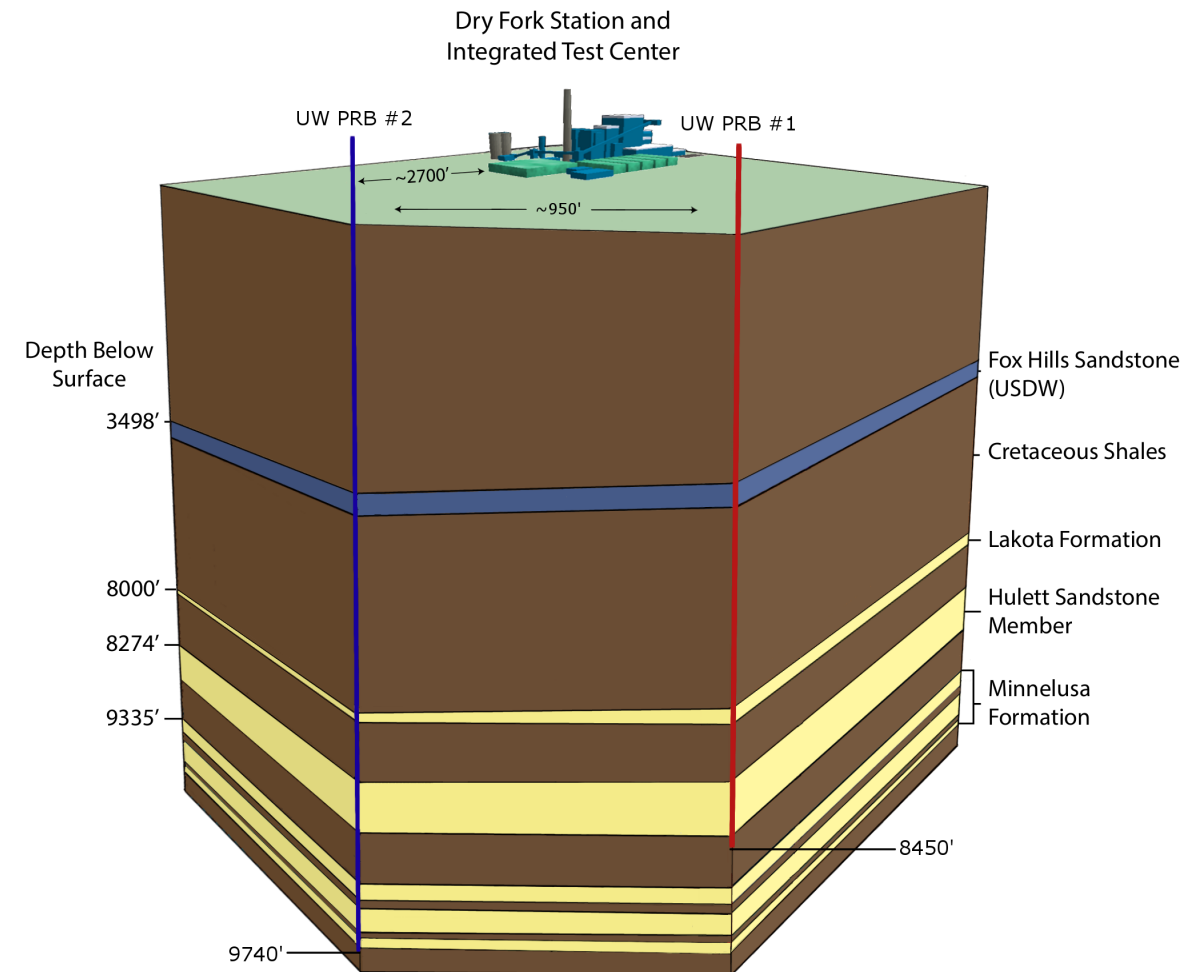


DE-FE0031587



Wyoming CarbonSAFE Storage Site

- Designed to test and optimize stacked storage CO₂ injection
- Provides a “template” to design other sites within the storage hub
- Finalizing site specific lessons learned and permitting



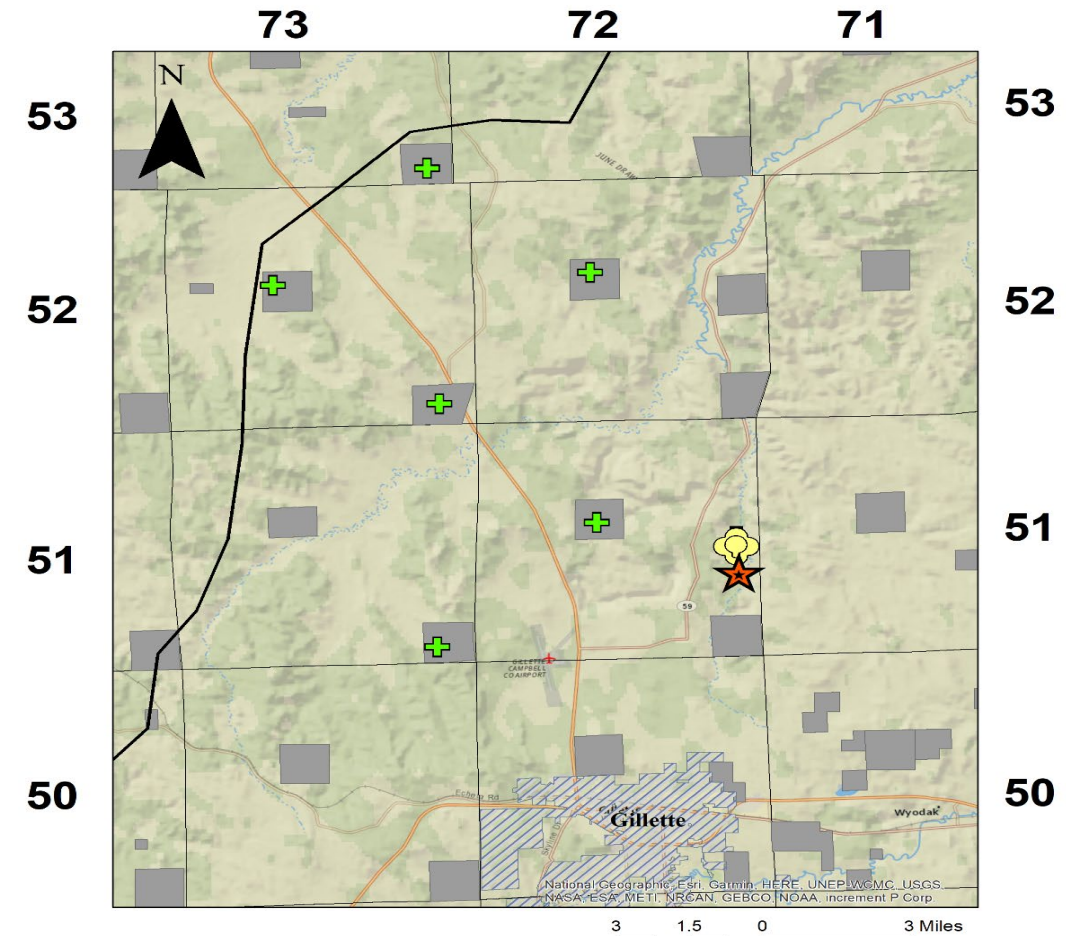
Wyoming CarbonSAFE Storage Hub

Work to date:

- ✓ Site characterization (2 wells, 3-D seismic, high resolution, well logs, geologic models)
- ✓ Shallow monitoring network (groundwater and soil gas)
- ✓ Model agreements (pore space, off-take)
- ✓ Economic models
- ✓ Permitting (in progress)
- ✓ NEPA
- ✓ Public outreach (Social license to operate)

Future work:

- ✓ Deep monitoring network
- ✓ CO₂ Hub build-out
- ✓ Finalize permitting



- ✚ Proposed Injection Site
- ★ UW PRB 1 & 2
- ☁ Dryfork Station
- CO2 Pipelines
- ▨ Gillette, WY
- State Land
- Township and Range

Wyoming CarbonSAFE: Accelerating commercial deployment

*Regional Carbon Management, Applicant Education
Workshops*

April 26th, Salt Lake City

Scott Quillinan

scottyq@uwyo.edu



UNIVERSITY
OF WYOMING

School of
Energy Resources

THE WORLD NEEDS MORE COWBOYS.