

Negotiating Community Benefits Agreements

Lessons learned from a rural mining community

Jackson Rose

Earth Sciences Department
Montana State University
December 4, 2023

Quick Roadmap



What role do CBAs play in the context of mining projects?



What challenges do communities face in pursuing a CBA?



Takeaways and lessons learned from Meagher County

Community Benefits Agreements & Mining Projects

- Similar to other industrial developments, CBAs are employed in the context of mining developments to ensure host communities recognize both short- and long-term benefits from new projects.
- Given the well-chronicled risks that face mining communities, i.e., the classic ‘boom-bust’ mining town, CBAs are an increasingly popular mechanism to support communities and help developers secure a Social License to Operate.

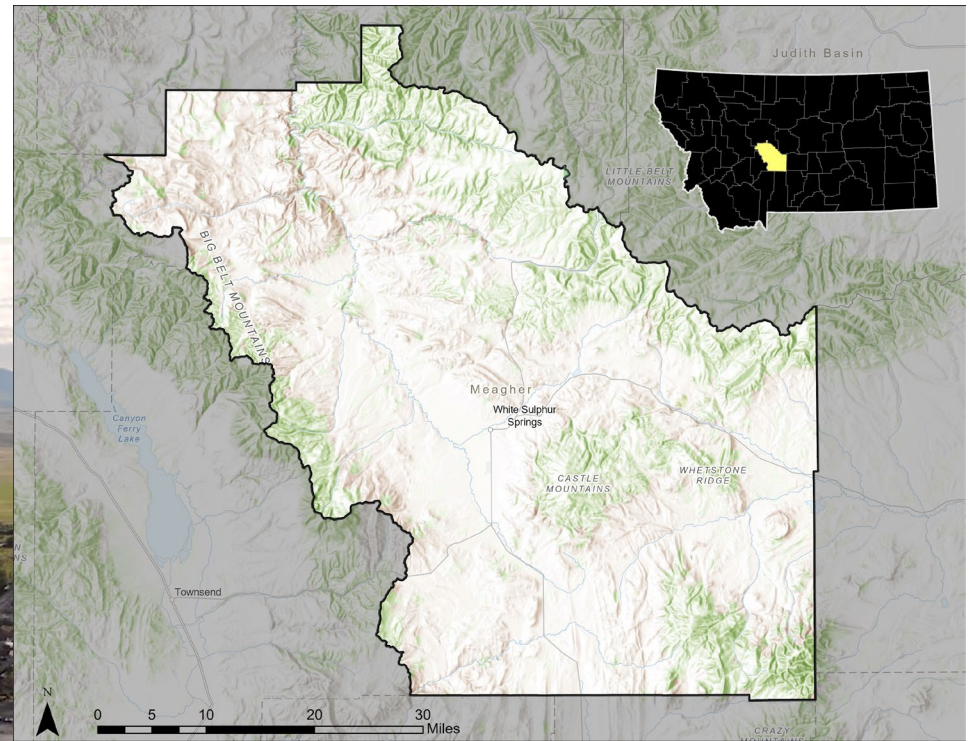


Challenges

- Capacity mismatch
- Varying priorities
- Uncertain project timelines



Lessons learned from Meagher County



Establishing an Advisory Board



HOME

WHAT WE DO

WHO WE ARE



Meagher County Stewardship Council

OUR MISSION

The Meagher County Stewardship Council shepherds efforts to safeguard and enhance the natural resources, culture, and economic interests of Meagher County for the benefit of current and future generations.

Building Capacity





Engagement and Education

Peer-to-peer Learning



Providing Technical Assistance



ONEMONTANA





CBA Negotiations

- Have a shared understanding of the regulatory landscape
- Rely on best practices seen in other agreements




**HARD ROCK MINING
IMPACT PLAN**

BLACK BUTTE COPPER PROJECT
MEAGHER COUNTY, MONTANA



TINTINA MONTANA INC.
a.k.a. **SANDFIRE RESOURCES AMERICA INC.**
WHITE SULPHUR SPRINGS, MONTANA

AUGUST 2018



GOOD NEIGHBOR AGREEMENT

BETWEEN

STILLWATER MINING COMPANY

AND

**NORTHERN PLAINS RESOURCE COUNCIL
COTTONWOOD RESOURCE COUNCIL
STILLWATER PROTECTIVE ASSOCIATION**

ORIGINALLY SIGNED
MAY 8, 2000

Additional Resources

Add

1. [Community Benefit Agreements and Funds: A Summary of Key Literature and Case Studies](#)
2. [Peer-to-peer workshop in White Sulphur Springs, MT](#)

Photography provided by Into the Little Belts and Tintina Montana.