

Unidad de Planeación Minero Energética Mining and Energy Planning Unit UPME

PRESENTACION CORPORATIVA CORPORATE PRESENTATION

Presented before the Haitian Mission, April 22, 2014



MinMinas
Ministerio de Minas y Energía

**PROSPERIDAD
PARA TODOS**

1. The Mining and Energy Sectors in Colombia
2. The Mining and Energy Planning Unit – UPME
3. Main Activities and products of UPME

1. Mining and Energy Sectors in Colombia

CENTRALIZED




Head of the sector – Public Policy maker for the Mining and Energy Sectors



Regulating Entity

DECENTRALIZED

Entities with direct relation

	Think Tank. Policy Advisor. Information manager. Technical
	Mining Resources Manager
	Hydrocarbon Resources Manager
	Geological Surveying
	Energy Solutions for Isolated areas

Entities with participation





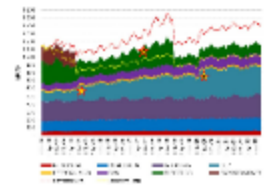


2. Who are we?

UPME is a special administrative unit of technical nature, created back in 1994, under the Ministry of Mines and Energy. It has its own budget, and has a special regime for acquisition and contracting purposes

Main objectives:

- Integral planning of the mining and energy sector. Demand and supply analysis. Energy resource diagnosis. Indicative planning, Support for the Mining and Energy Ministry
- Management of the information for the mining and energy sectors, for supporting the decision making processes of the public and private parties
- In charge of the National Transmission System Expansion through competitive bidding. Technical advisor for the resource assignment of the various funds that support electrification programs



Mission

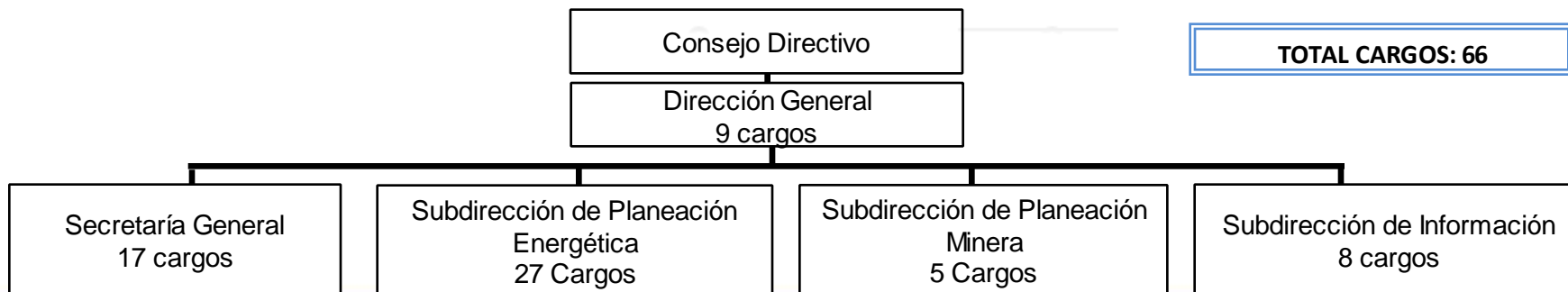
Planning the mining and energy sectors, managing the information, and supporting the policy formulation processes.

Vision

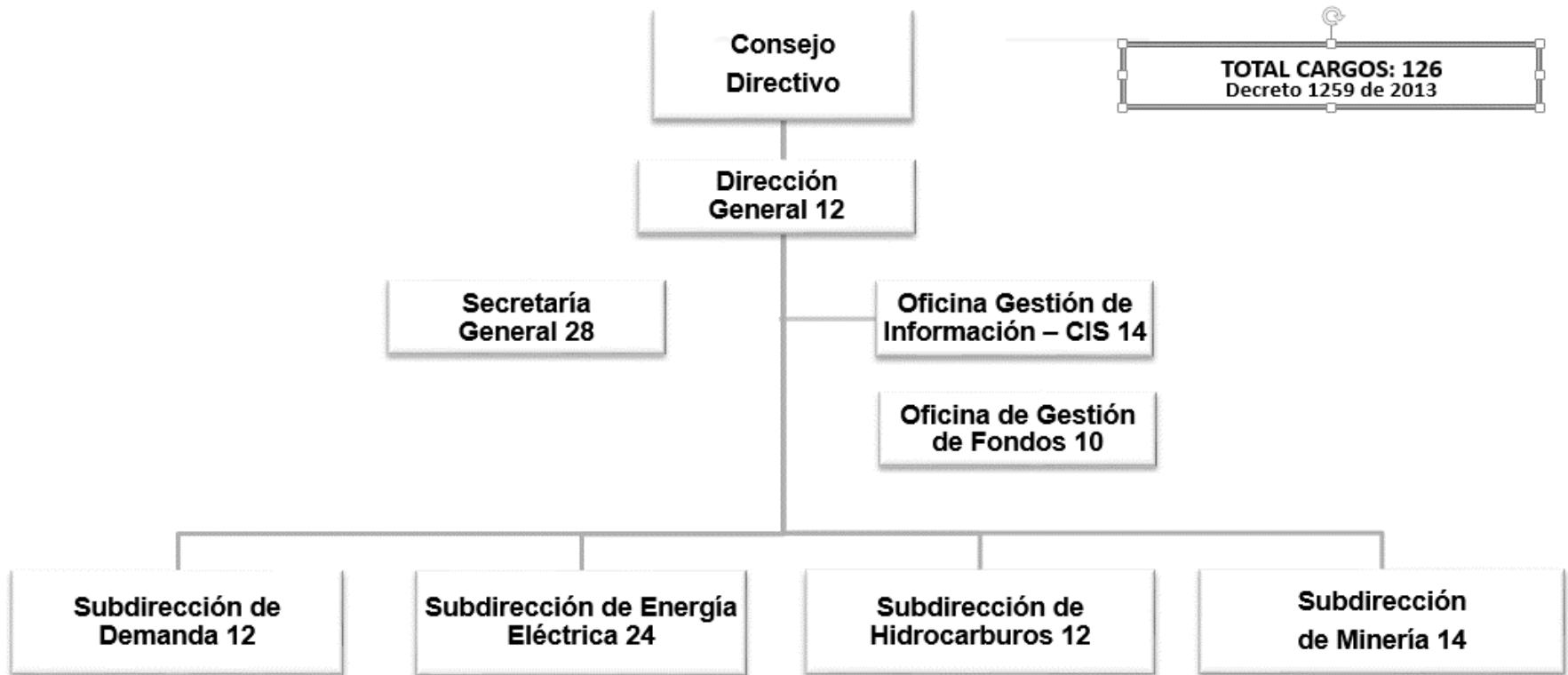
By 2019 UPME will be the main referent in the mining and energy sectors for the policy analysis, decision making and the supply of reliable information.



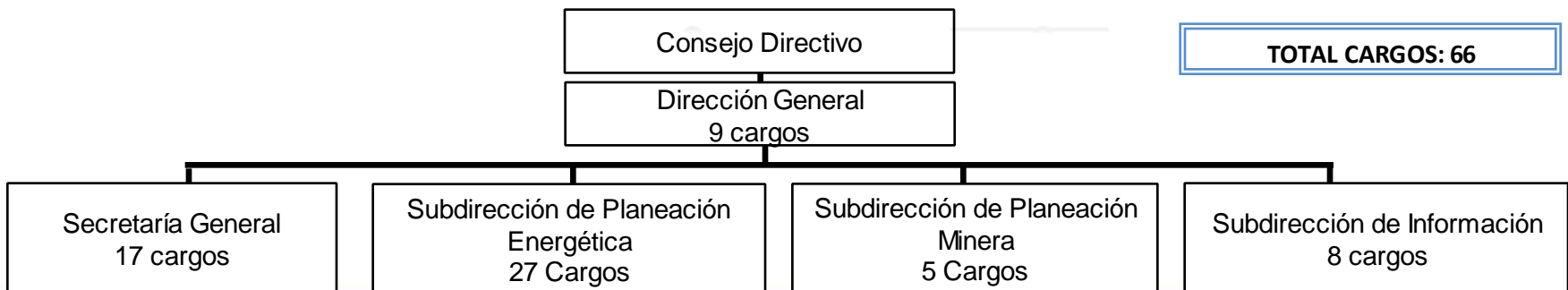
Estructura Organizacional Antigua



Estructura Organizacional Oficial



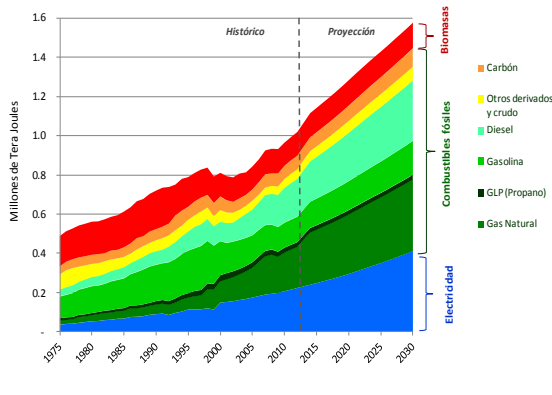
Estructura Organizacional Antigua



National Energy Plan. Electricity, hydrocarbons, renewable energy. 20 year span
 New Plan in course: Energy diversification. Security of supply. Energy accessibility and affordability. Energy efficiency. Clean production and use security, Transportation efficiency. Added value for energy products. Energy exports. Social and environmental issues. Water and energy. Institutionalism

Secenario Building

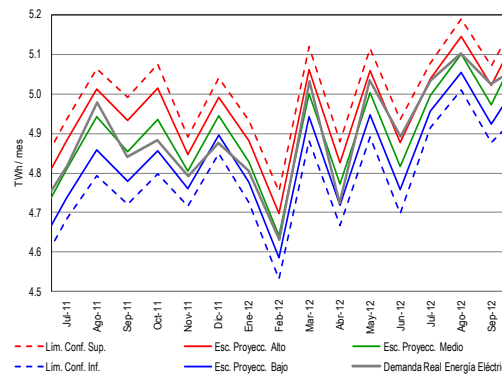
Different demand escenarios for each energy carrier. Demand by sector. Integrated supply–demand analysis



Forecasts Tracking

Forecast tracking according to consumption-production evolution

Last year results were within confidence limits (95%)

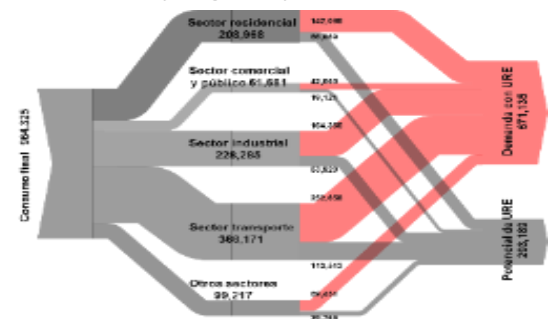


Energy Efficiency Renewable Energy

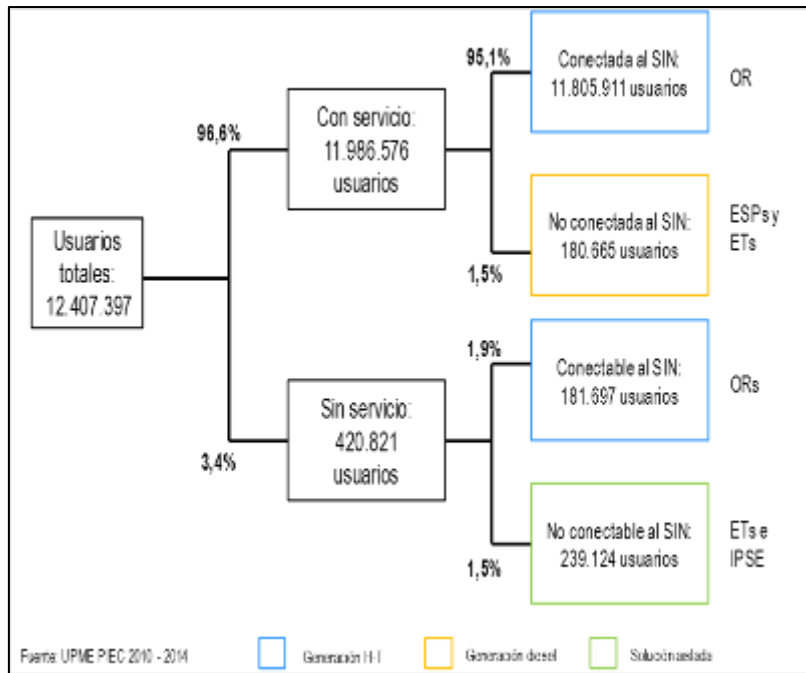
Savings potential for the country near 30%

Achievements will depend on policies and investment in energy efficiency

Renewable Law. National Efficiency Agency



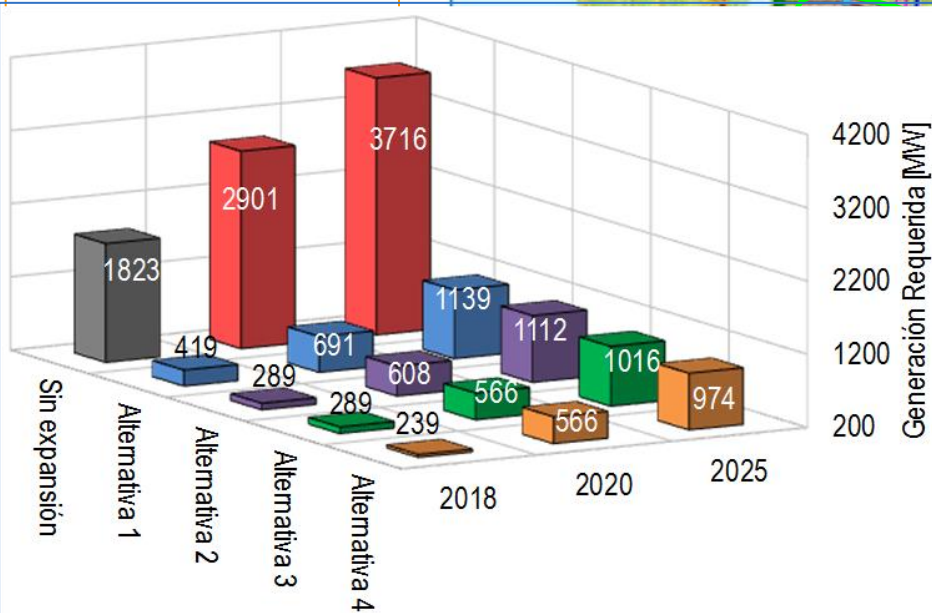
3. Main Products **ELECTRICITY**



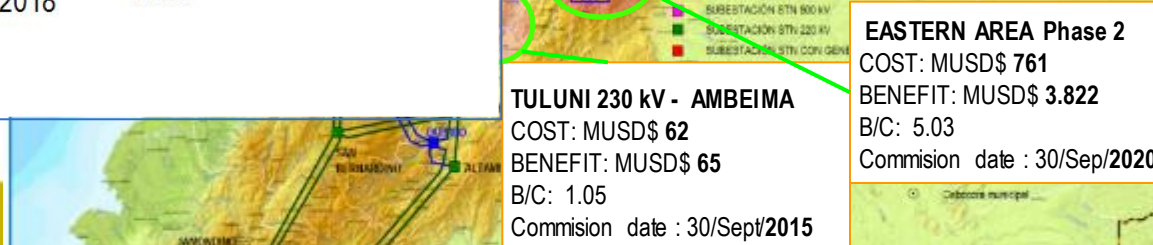
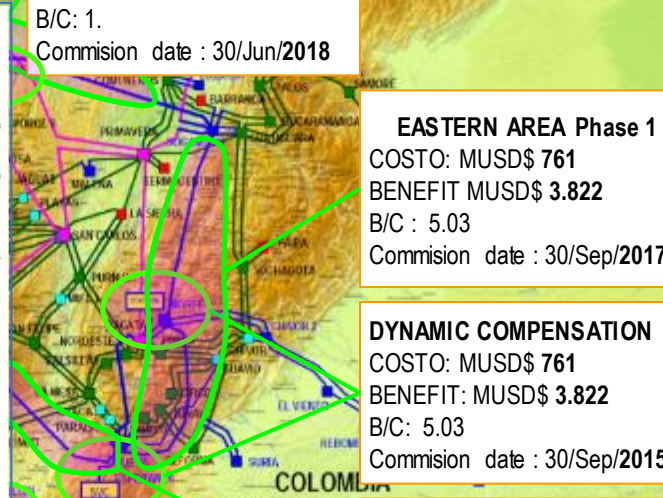
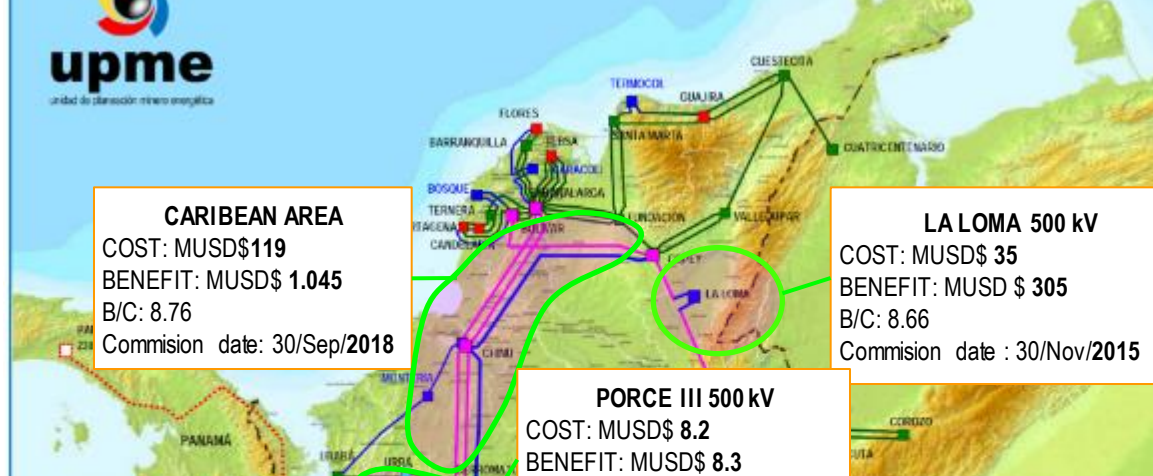
Generation and Transmission Expansion Plan

Partly indicative (generation infrastructure, distribution infrastructure)
 partly mandatory (transmission infrastructure). Investment signals for the private sector. Analysis of impacts of demand management and energy efficiency.

Infrastructure to be constructed between 2015 and 2020



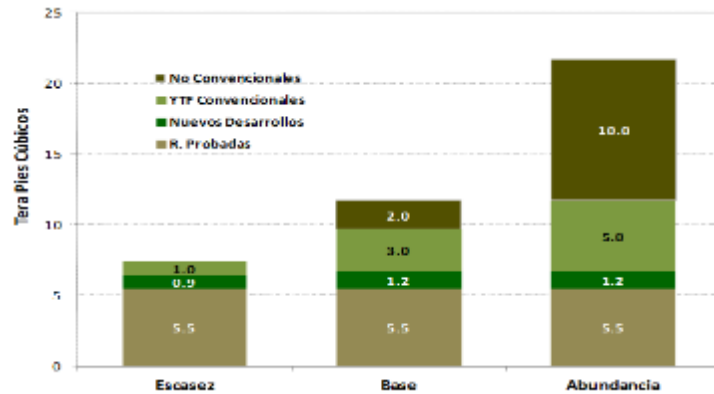
Transmission expansión plan 2013-2027



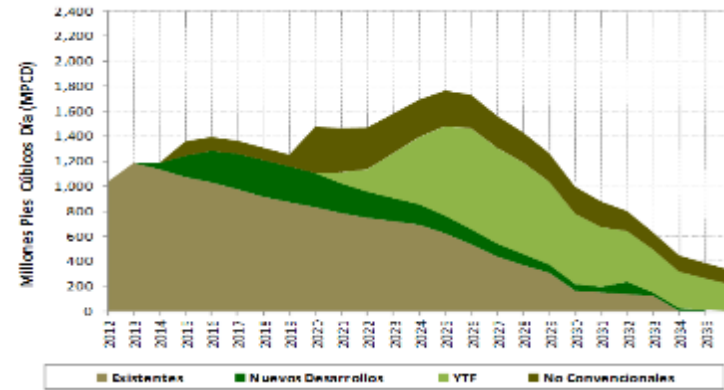
3. Principales productos de la UPME **HIDROCARBONS**

Natural gas supply and transportation infrastructure

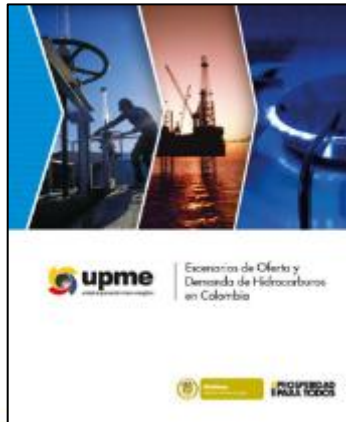
Reserves incorporation



Production profile - Base Case



**Hidrocarbons
 Demand -
 Supply Scenarios**



**NatGas, biofuels and liquid fuels price
 estimation, market analysis**

Mining Development Plan - Visión 2018 y 2032

Strategic lines::

- Mining industry positioning
- Mining as a development instrument
- Artisan and small mining
- State commitment for the development of the industry



National Mining Environmental and Land Use Plan

Instrumentation of the development plan according to environmental and land use normativity

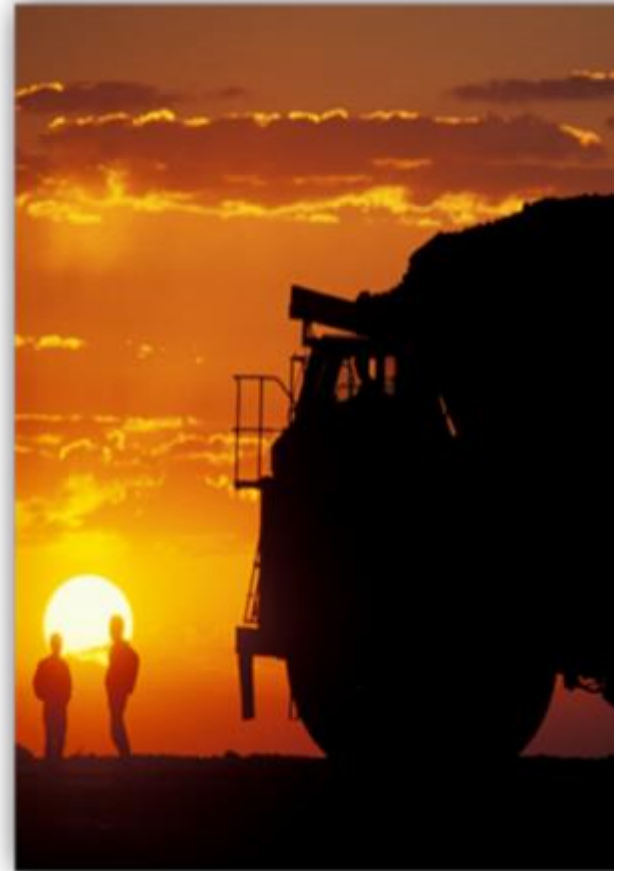
3. Main Products **MINING**

Royalties calculation through base price

Quarterly definition of base Price for royalties calculation

Nikel base price determination for royalties calculation

Methodology designed in conjunction with National Mining Agency



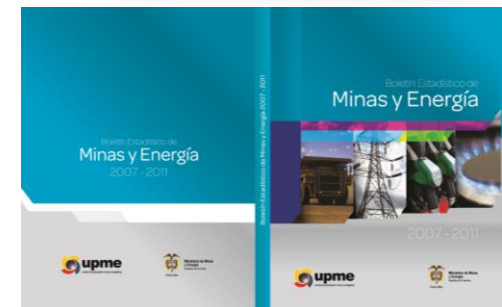
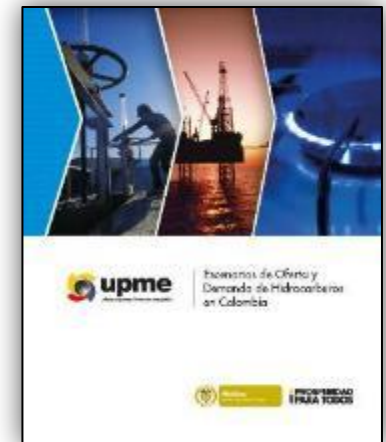
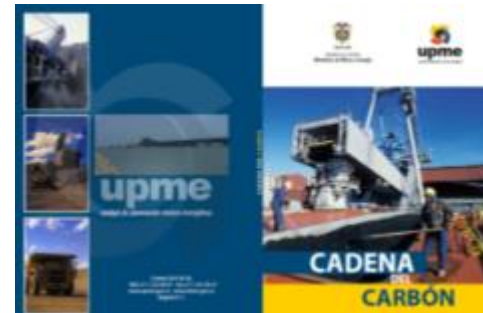
**Technical, financial and economical review of
projects applying for these funds:**

- **FAER:** Rural electrification
- **FNR:** Royalties fund
- **FAEP:** Oil stabilization fund
- **SGR: Royalties system**
- **FECF:** Special development fund
- **FINDETER:** Rural development financing agency

3. Main Products INFORMATION - CIO

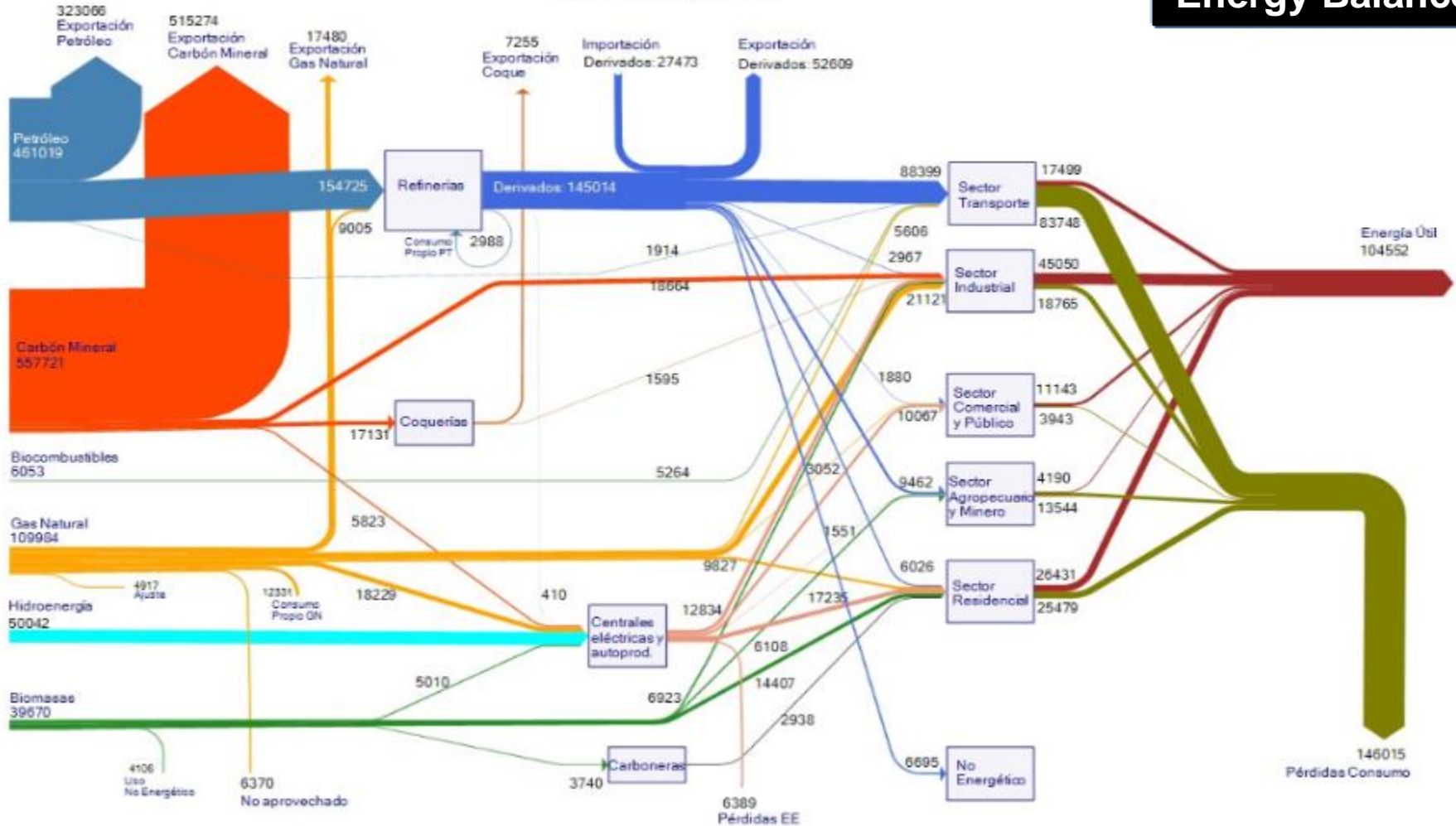
Added Value for the UPME Products

- Energy Balance
- Energy Plan
- Generation Transmission expansion plan.
- Natural Gas Plan Escenarios de oferta y demanda de hidrocarburos.
- Mining development plan
- Mining environmental and land use plan.
- Electrification in connected and isolated áreas
- Statistics. Publications



Energy Balance

REPÚBLICA DE COLOMBIA - FLUJO ENERGÉTICO 2011
 UNIDADES EN TERACALORIAS



Fuente: UPME, 2011

3. Main Products INFORMATION - CIO

SIMEC – Sistema de Información Minero Energético Colombiano




Entradas: Se cuenta con procesos automáticos, semiautomáticos y manuales.
 Salidas: Web, publicaciones, mapas, boletines y planes sectoriales



- SIMCO: Sistema de Información Minero Colombiano.
- SIEL: Sistema de Información Eléctrico Colombiano.
- SIPG: Sistema de Información de Petróleo y Gas.
- S3EA: Sistema de información de Eficiencia Energética y Energías Alternativas.
- SIAME: Sistema de Información Ambiental Minero Energético





leap

optgen

enpep

sddp

super


tgnet

mpode

neplan

piec

pipeline



WEBSITE: www.upme.gov.co



Convocatoria UPME 05-2012 Proyecto Línea de Transmisión Bolívar – Cartagena 220 kV y los módulos asociados



CONVOCATORIAS PÚBLICAS PARA PROYECTOS DE TRANSMISIÓN (≥220 kV)

Actualmente se encuentran abiertos oficialmente los procesos de selección para los proyectos de transmisión (≥220 kV) UPME 01-2013 Sogamoso – Norte – Nueva Esperanza 500 kV y UPME 04-2013 Bello Guayabal – Ancón y en pre-publicación los proyectos UPME 03-2013 Tuluní, UPME 05-2013 Suria, UPME 06-2013 Caracolí y UPME 07-2013 Montería, los cuales abrirán oficialmente en las próximas semanas. Adicionalmente, se invita a estar consultando el vínculo "Convocatorias Transmisión" los documentos de...

SIMEC – Sistema de Información Minero Energético Colombiano



www.upme.gov.co

angela.cadena@upme.gov.co



@upmeoficial