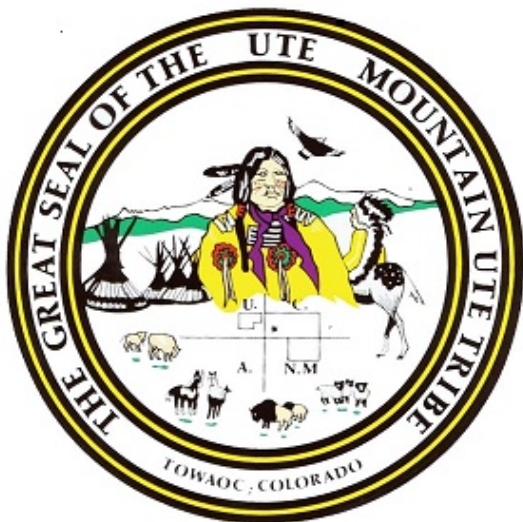




 **WESTMORELAND MINING HOLDINGS LLC**

Tribal Mineral Energy Webinar
August 5, 2020



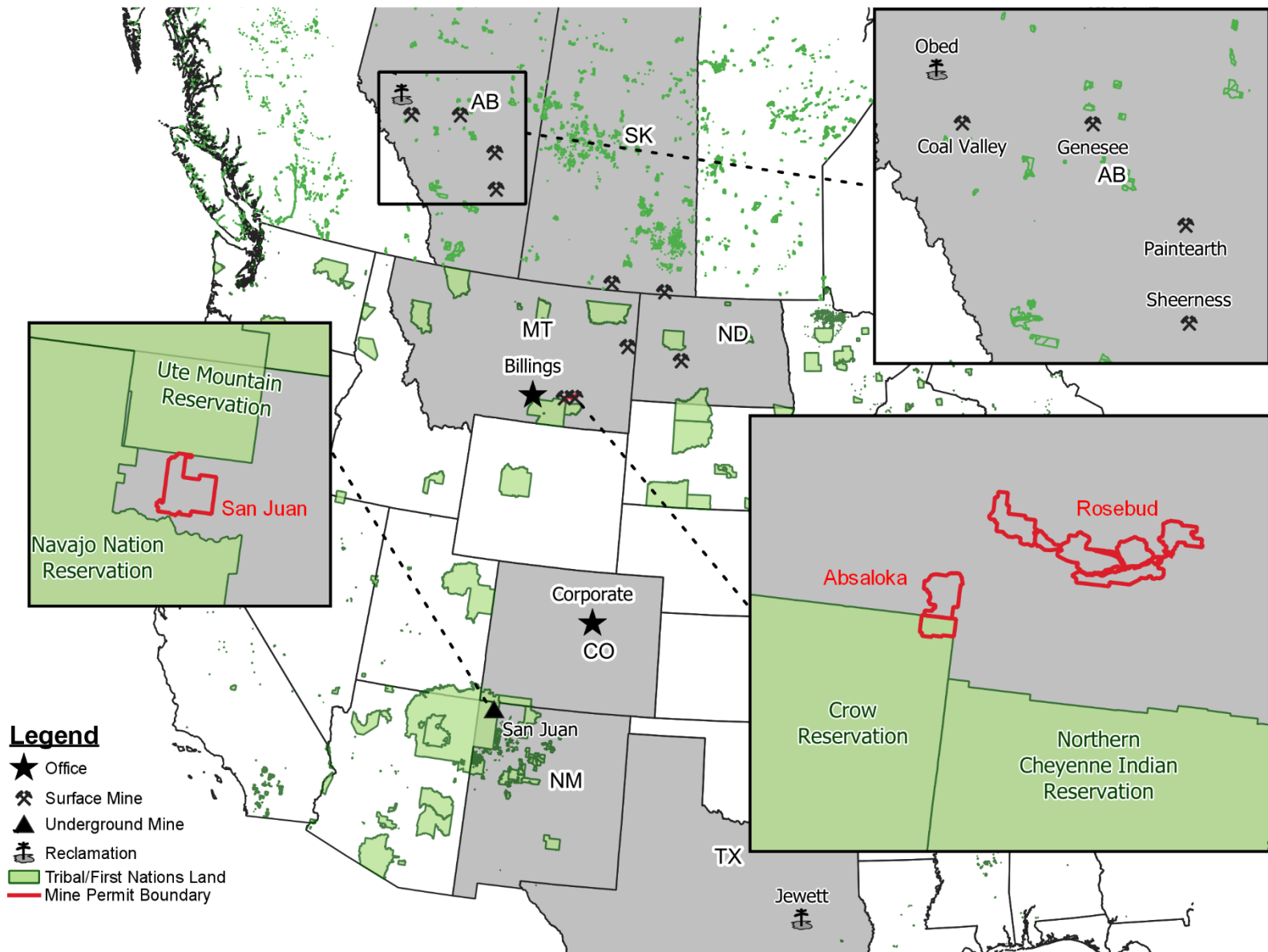
Westmoreland has been Enriched by Our Tribal Friends

- Exceptional Relationship and Friendship for Five Decades
- How to Care, How to Share, Family/Kinship, Humility, and Respect
- Cherishing and Caring for Mother Earth - the Land
- Strongly Aligned Values with All Tribal Partners
 - Uncompromised Safety – personal safety and co-worker safety
 - High Duty of Care for our People
 - Employee Enrichment
 - Environmental Stewardship (***Mine Reclamation >>> Carbon Capture***)

Westmoreland holds our long-term Tribal Relationships
with the Highest Regards



Location Map

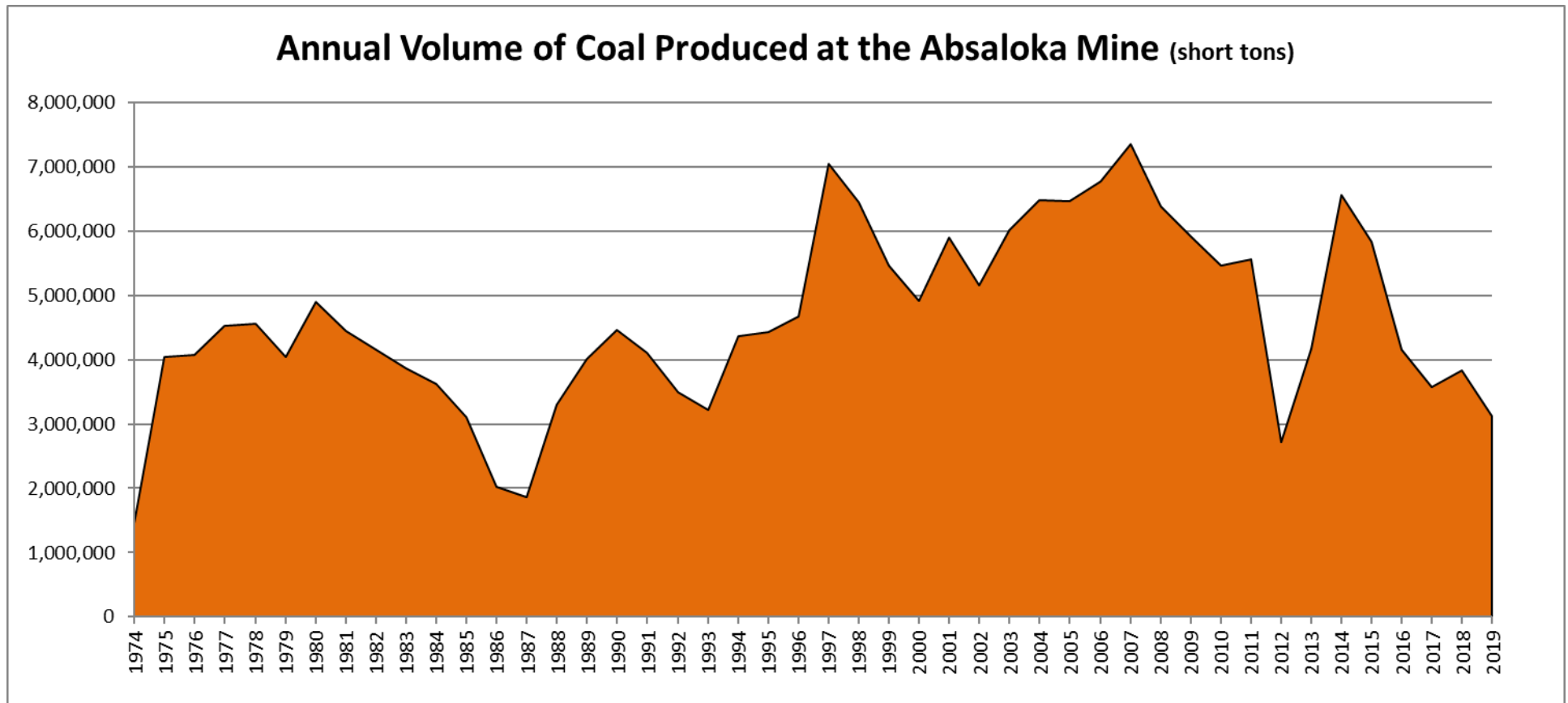


Crow Tribe - Absaloka Mine

- Westmoreland Absaloka Mining LLC (previously Westmoreland Resources Inc.) formed in 1972
- Ground was broken in October 1972
- First unit train load of coal was shipped July 1, 1974 to Sherco
 - Sherco – Sherburne County Generating Station in Becker, Minnesota designed for Absaloka Coal
- All mineral/coal rights held by Crow, on and off Reservation
- Employee Total Current Employment: 122
 - 79% Crow or other Native American
 - Majority of supervisors are Crow who were trained and advanced through the ranks



Crow Tribe - Absaloka Mine



- 200+ million tons of coal sold
- Since 2000, over \$325 million of Taxes and Royalties paid to Crow Tribe
- Collections are dispersed to tribal members as per capita payments and fund Crow tribal government

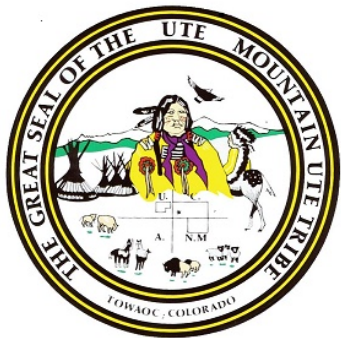
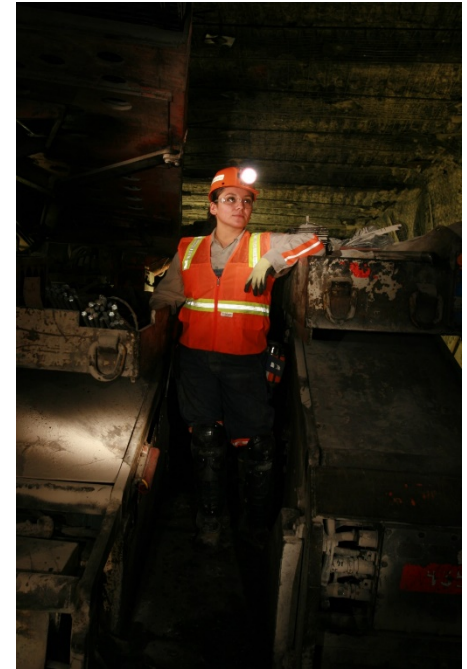
Northern Cheyenne Tribe – Rosebud Mine

- Northern Cheyenne Tribe neighboring to the south of Colstrip/Rosebud Mine
- 1977 – EPA approved the Northern Cheyenne Reservation as a Class 1 air quality region
- 1980 – Montana Power Company and Northern Cheyenne Tribe signed an innovative settlement agreement, which included
 - Preferential hiring and training through the Tribal Employment Rights Office (TERO)
 - Established transportation provisions from the reservation to Colstrip
 - Donated to assist in formation of the bank in Lame Deer
 - Provided funding to enhance Northern Cheyenne law enforcement
 - Full time Mine liaison to maintain a high level relationship with the Tribe
 - Over 100 full-ride college scholarships provided by the Mine and Power Plant to date
- All inclusive win-win for both parties
- (60) Native American employees



Navajo Nation & Ute Mountain Ute Tribe – San Juan Mine

- 1973 mine opened as a surface mine, converted to underground in 2001
- Environmental Stewardship is a cornerstone value of Westmoreland
- The Mine neighbors Navajo Nation and Ute Mountain Ute Tribe
- (166) or 61% Native American employment
- Closely working on the future of the mine and generating station through CCUS technology – partnered with Enchant Energy
 - True Public-Private Partnership (P3), including City of Farmington and Consolidated School District
 - CCUS provides 70% lower CO₂ emissions than Natural Gas
 - Continue to provide numerous skilled high-wage jobs for Navajo Nation



Canada

- Similarly strong relationships with First Nations/Indigenous Communities in Alberta
 - Alexis Nakota Sioux Nation
 - Sucker Creek First Nation
 - Foothills Ojibway First Nation
 - O'Chiese First Nation
 - Ermineskin Cree First Nation
 - Whitefish Lake First Nation
 - Paul First Nation
- Federal duty to consult with First Nations – per historical Treaty Rights
- Highly value traditional land use rights of First Nations
- Preservation of fishery habitat and inclusion of traditional plants are key priorities



Thank You / Aho / Nea'ese / Ahehee / Tog'oiak'

