



141 Tremont St., Boston, MA 02111

(t) 617-902-2354 (f) 617-902-2349

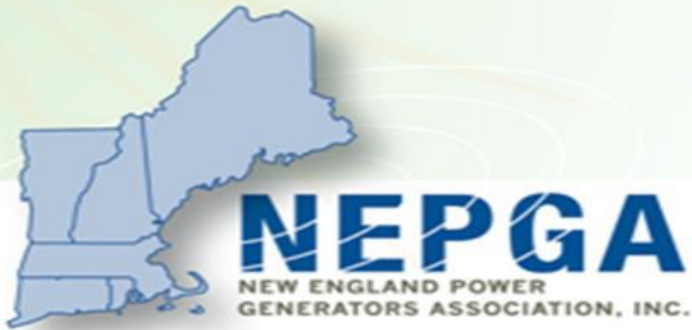
[www.nepga.org](http://www.nepga.org)

# ***State of the New England Electricity Market***

**New England Power Generators Association**

Dan Dolan, President

January 21, 2016



# Who is NEPGA

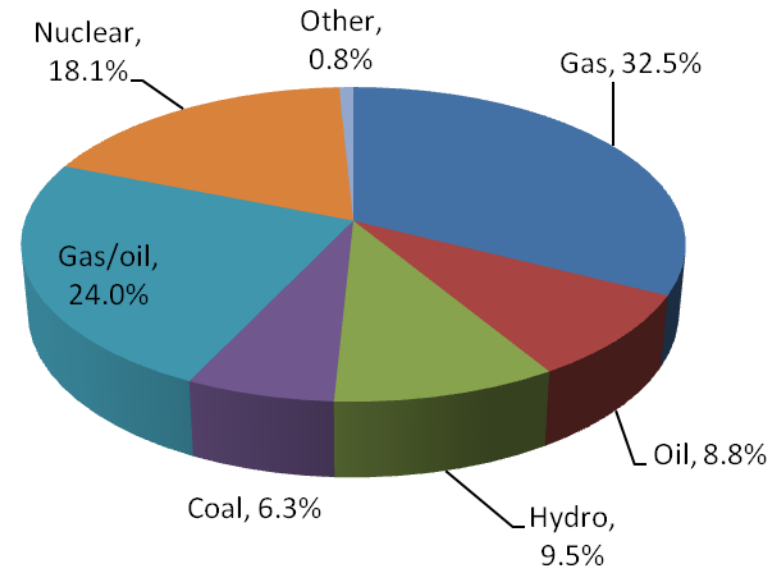
141 Tremont St., Boston, MA 02111

(t) 617-902-2354 (f) 617-902-2349

[www.nepga.org](http://www.nepga.org)

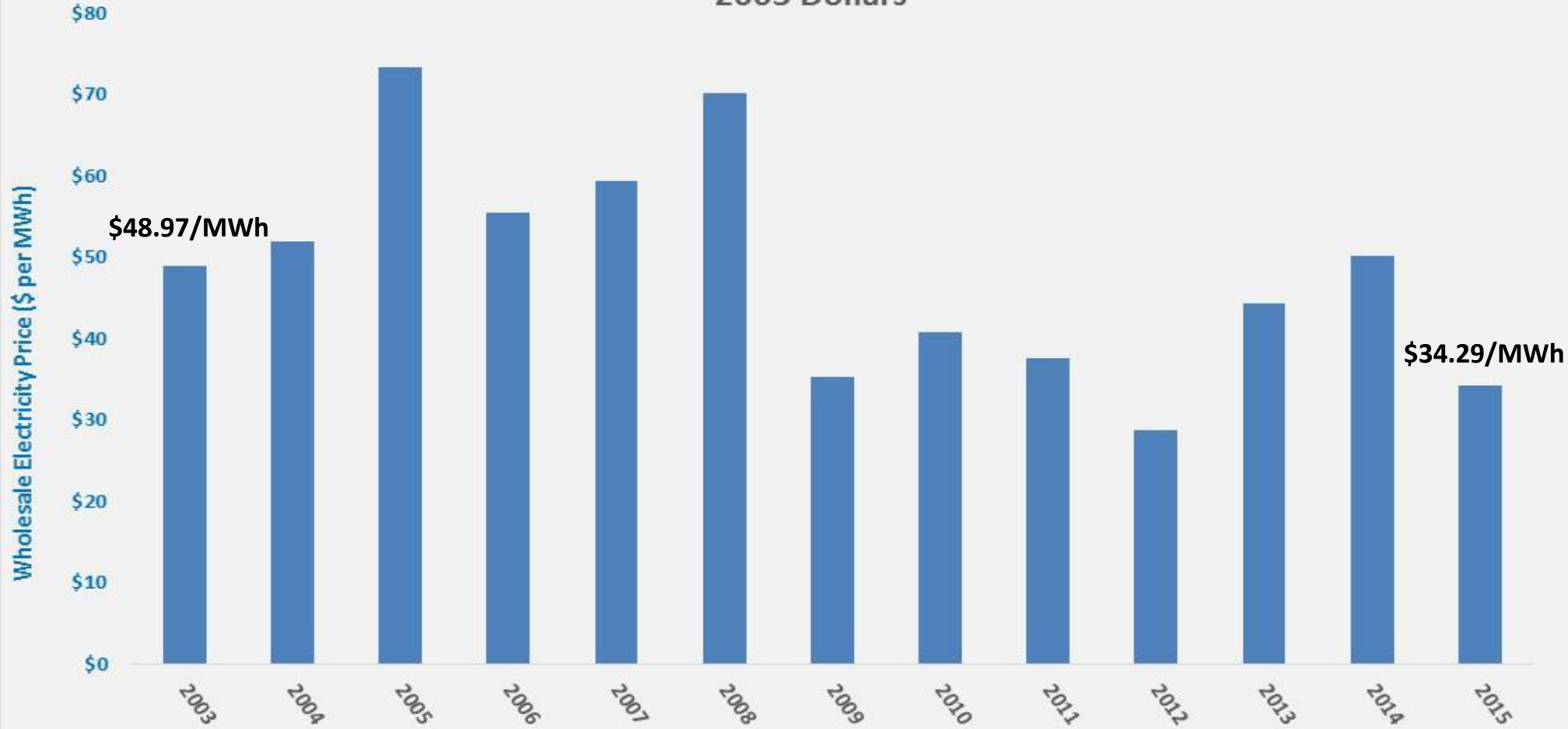
- The trade association representing competitive electric generators in New England
- Our member plants represent 26,000 MW – or 85% – of all New England generating capacity
- Our core mission is to promote sound energy policies which will further economic development, jobs & balanced environmental policy

## NEPGA Regional Fuel Mix



*NEPGA is a regional trade association representing a diverse portfolio of plants, including natural gas, oil, coal, hydro, nuclear, and other renewable resources.*

## 2003-2015 Average New England Wholesale Electricity Prices Held Constant in 2003 Dollars\*



\*Uses BLS CPI Data for Inflation Adjustment to (2003 Dollars)

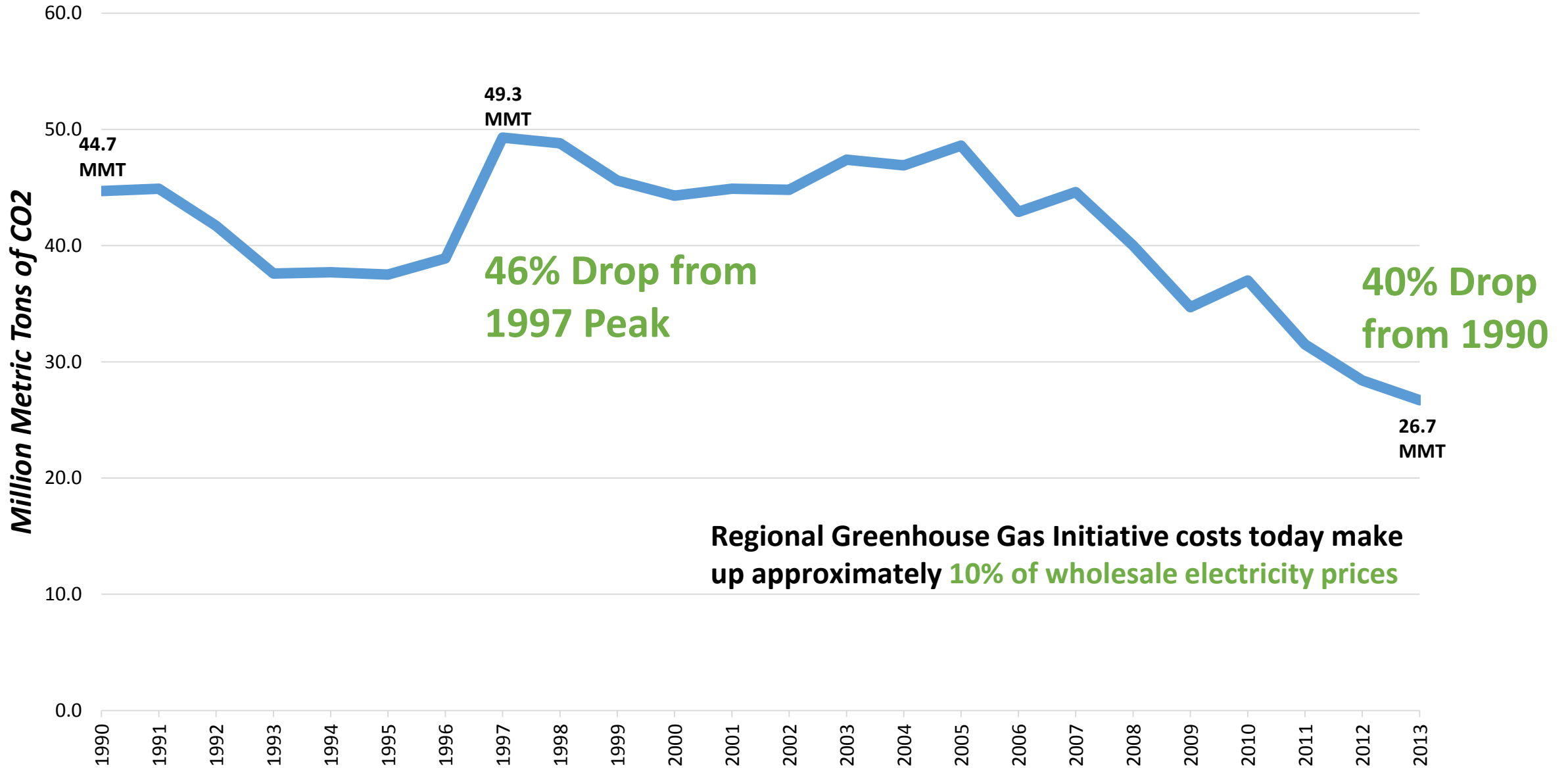
2015 saw 5 of the 7 lowest wholesale electricity price months since 2003.

June 2015 was the lowest wholesale electricity and natural gas price month since 2003.

# 2015 Wholesale Electricity Prices Were 30% Lower Than 2003

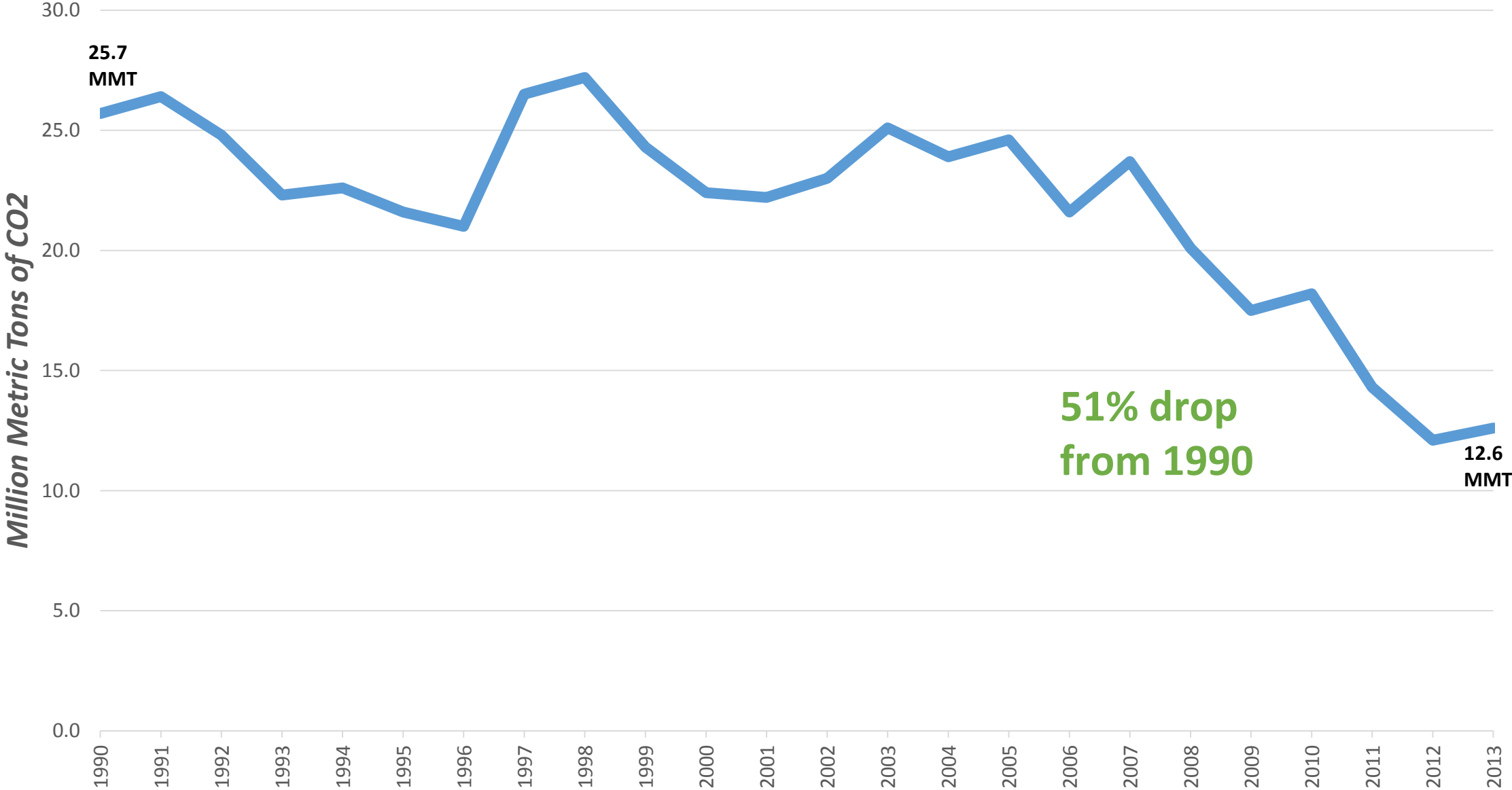
Bar charts show average system wide Locational Marginal Price (LMP) for ISO-NE held constant in 2003 dollars. Inflation since 2003 calculated using Consumer Price Index (CPI) data from the Bureau of Labor Statistics (BLS).

# New England CO2 Emissions from Power Plants



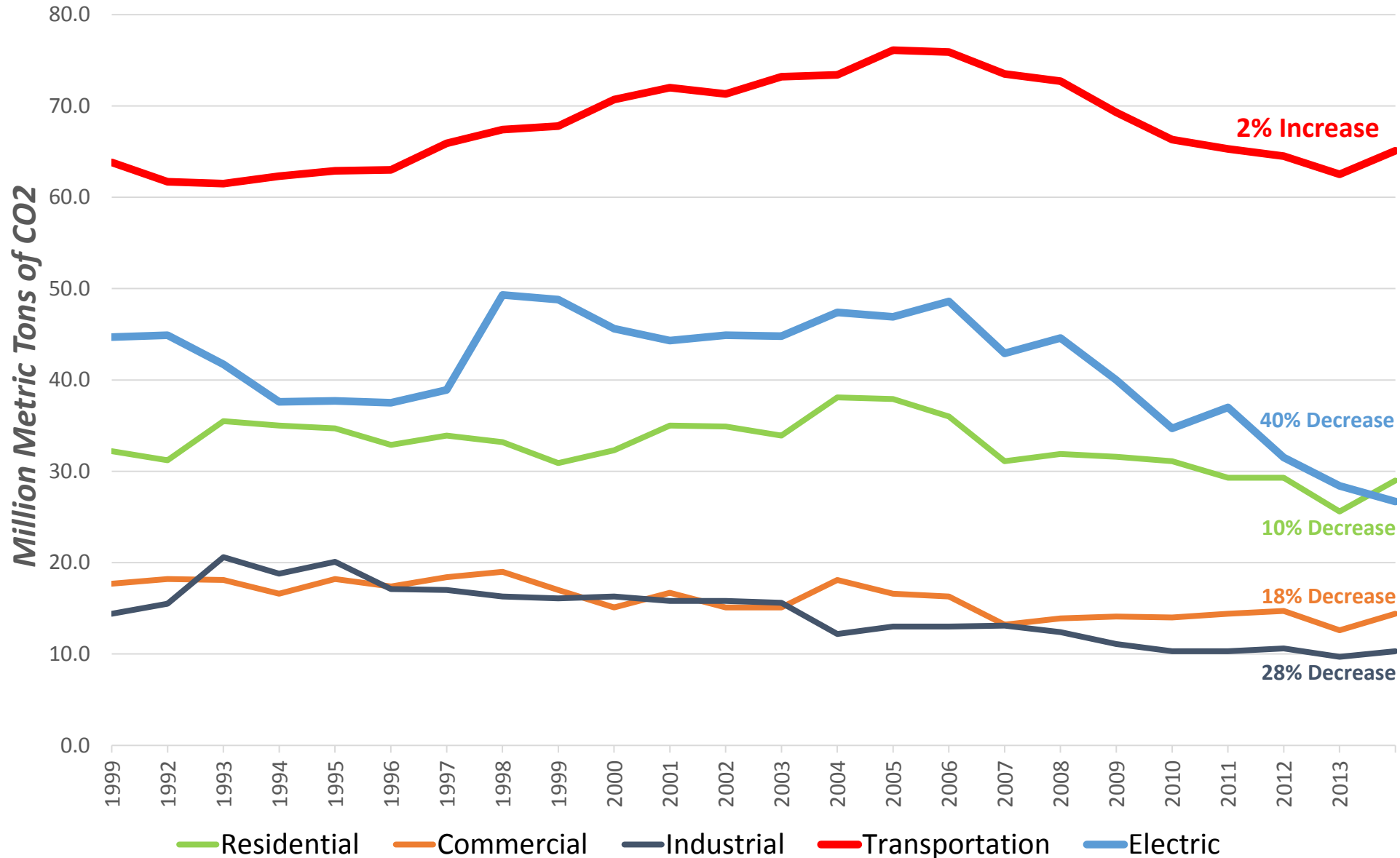
Source: U.S. Energy Information Administration, [www.eia.gov/environment/emissions/state](http://www.eia.gov/environment/emissions/state), October 26, 2015

# Massachusetts CO2 Emissions from Power Plants



Source: U.S. Energy Information Administration, [www.eia.gov/environment/emissions/state](http://www.eia.gov/environment/emissions/state), October 26, 2015

# New England Sector CO2 Emissions



**Transportation represents the largest share of CO2 emissions in New England.**

**Transportation is the only sector where CO2 emissions increased (slightly) from 1990.**

# New England Power Generating Capacity

New England All-Time Peak Demand	<i>Summer: 28,130 MW – August 2, 2006</i> <i>Winter: 22,818 MW – January 15, 2014</i>
Existing Power Plants Participating in FCA 10 for Delivery Year 2019/2020	<b>30,711 MW</b>
New Power Plants Competing in FCA 10 for Delivery Year 2019/2020	<b>6,720 MW</b>
Total New England-Based Power Generation Competing in FCA 10 for Delivery Year 2019/2020	<b>37,431 MW</b>
New Power Plants Under Construction/Development, Scheduled to Come Online by June 1, 2018	<b>1,734 MW</b> <b>864 MW in Massachusetts alone</b>

**14,000 MW of new plants were built at the dawn of restructuring without long-term contracts or subsidies. Today, that is being replicated with market-based investments and major interest in new opportunities to support reliability.**

*Source:* ISO New England Informational Filing for Qualification in the Forward Capacity Market, Federal Energy Regulatory Commission, Docket No. ER16-308, November 10, 2015



141 Tremont St., Boston, MA 02111

(t) 617-902-2354 (f) 617-902-2349

[www.nepga.org](http://www.nepga.org)

# Questions?

[www.NEPGA.org](http://www.NEPGA.org)

*Follow us on Twitter – [@NEPowerGen](https://twitter.com/NEPowerGen)*