

Statistics – Transmission System

- Over 15,500 miles of transmission lines in four states
- Over 1,450 transmission substations



Statistics – Transmission and Distribution

Transmission Responsibility

- 69 kV and above



Distribution Responsibility

- ◆ 34.5 kv (radial) and below

Capital Blanket Prioritization

Capital Blanket Project Prioritization

Capital blanket FP's provide for smaller (<\$250K) projects. Approximately half of the capital funding in these blankets is tied to failure and mandatory work. The remaining funding is used to address several key areas in substations and transmission lines.

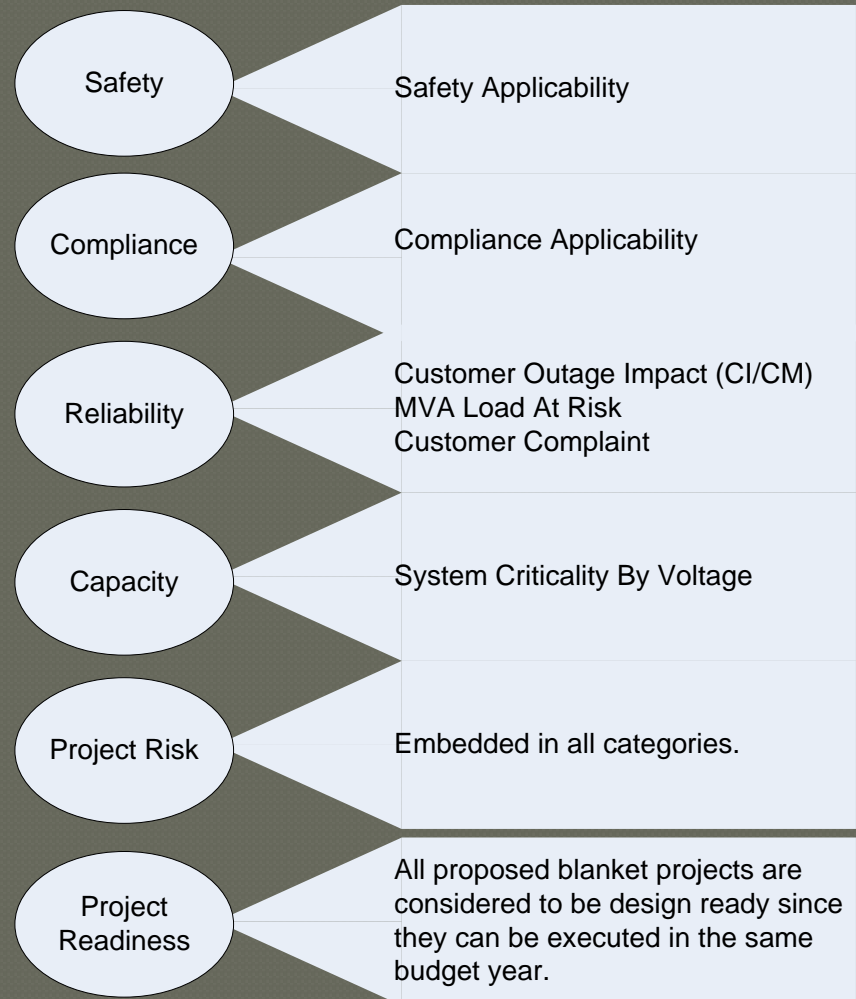
- ⇒ Public and employee safety.
- ⇒ Infrastructure Renewal.
- ⇒ Regulatory Compliance.
- ⇒ Reliability.
- ⇒ Mandated (Failure and ROW relocation)

Capital Blanket Project Prioritization

Prioritization criteria align with the prioritization categories of the Capital Project Prioritization ECI Team.

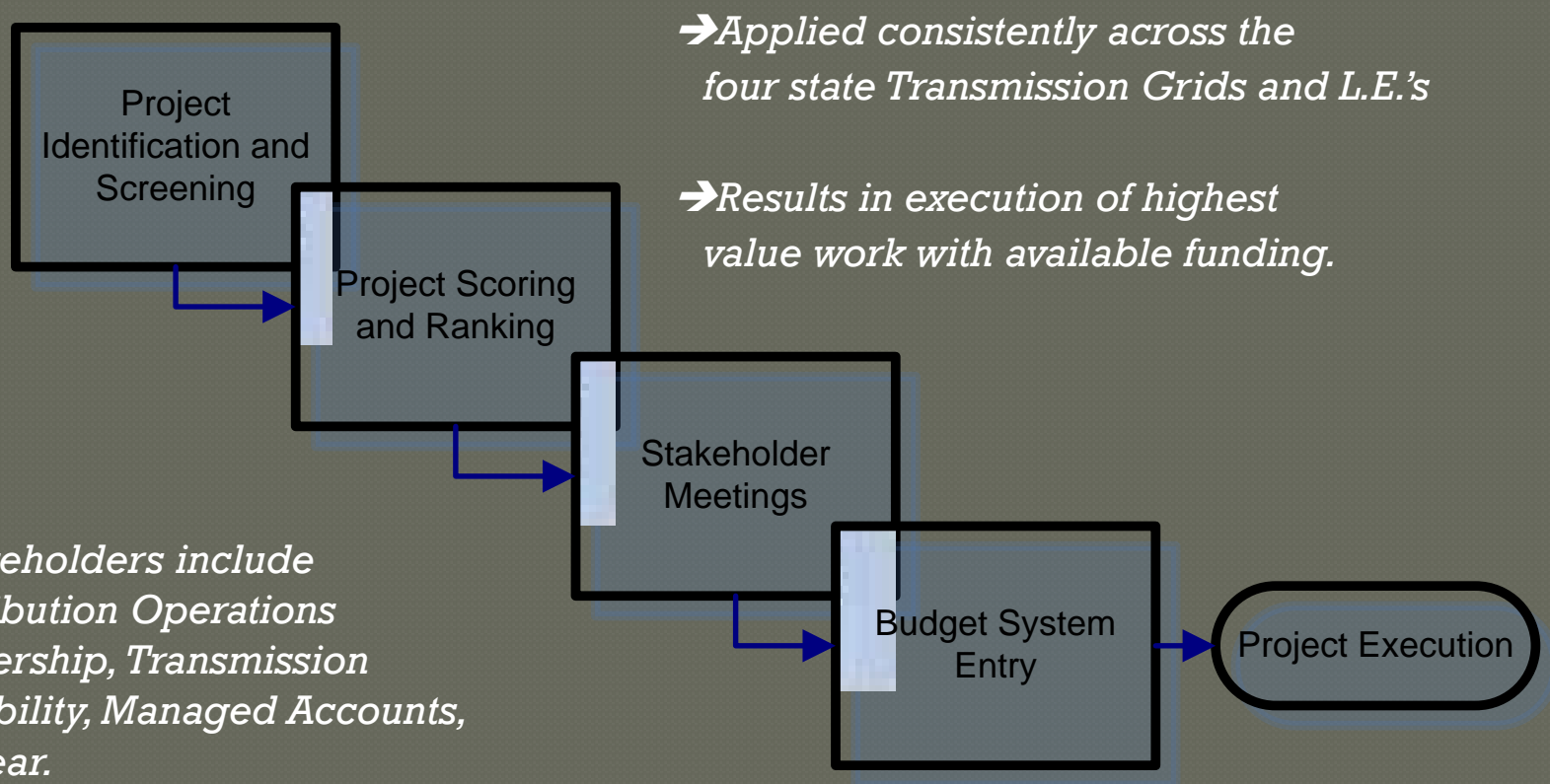


Alignment of Capital Blanket Prioritization With Capital Project Prioritization Methods



Capital Blanket Project Prioritization

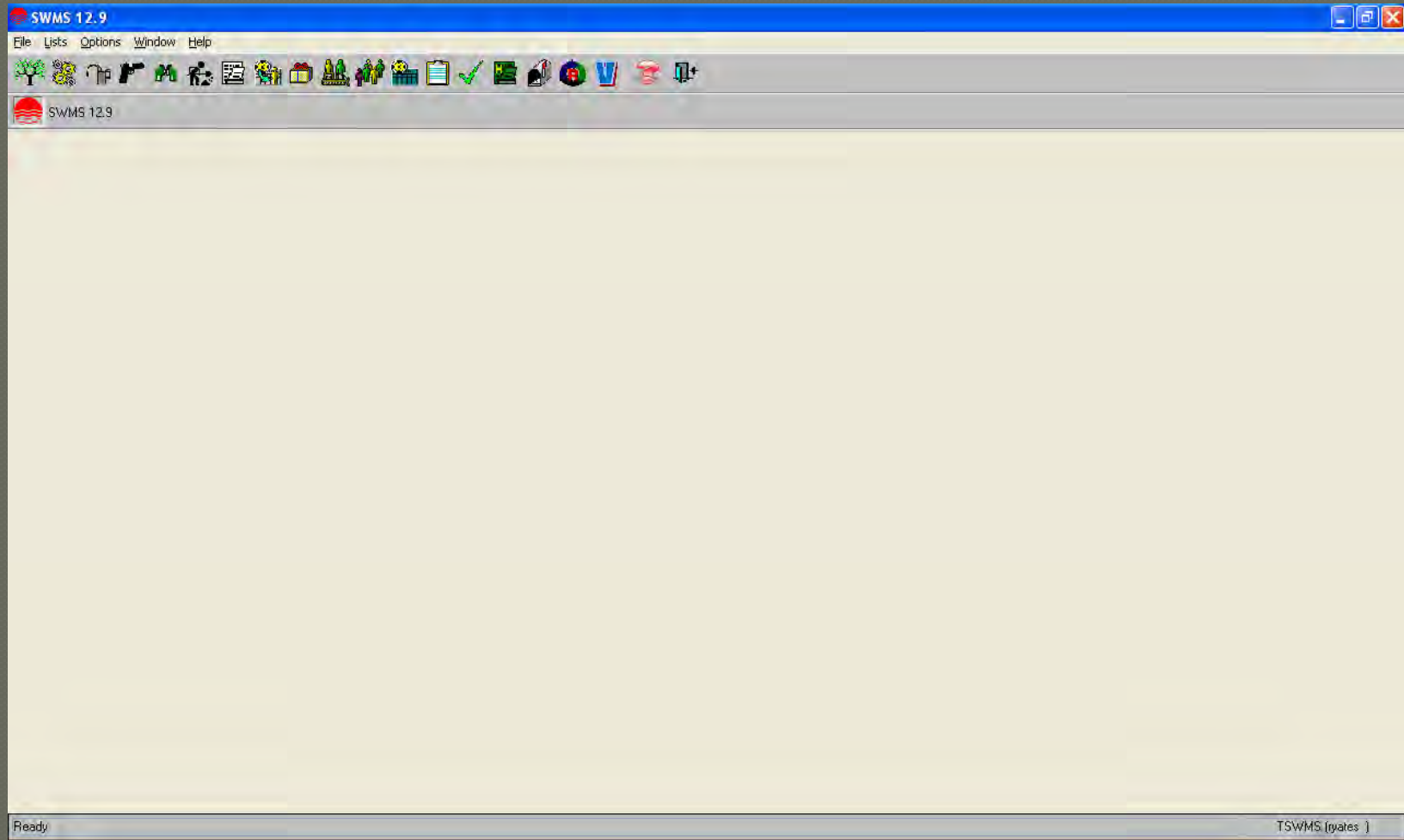
Process includes consensus building with stakeholders* - providing alignment and coordination of joint Transmission and Distribution reliability improvement initiatives.



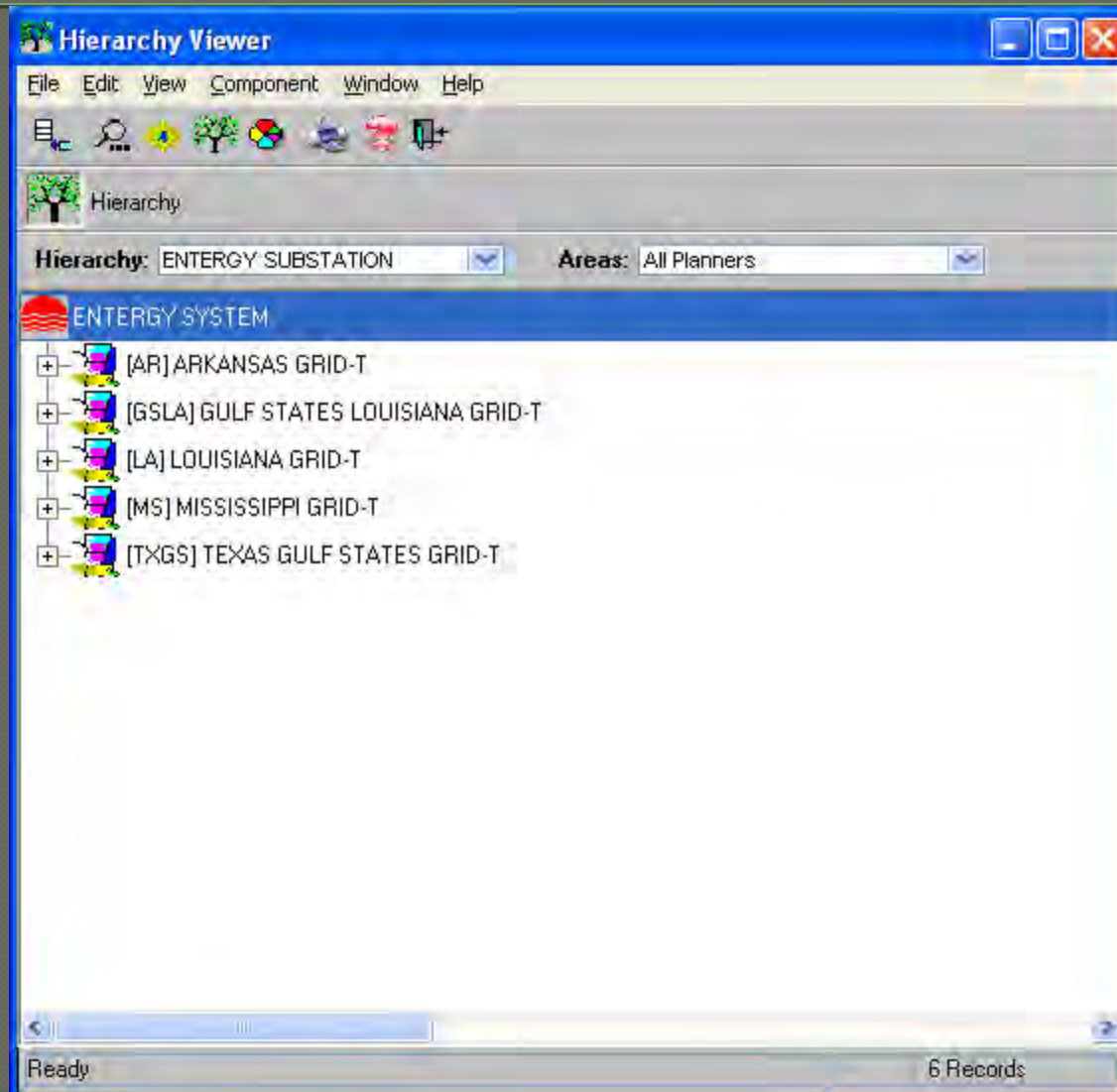
Maintenance System

SWMS

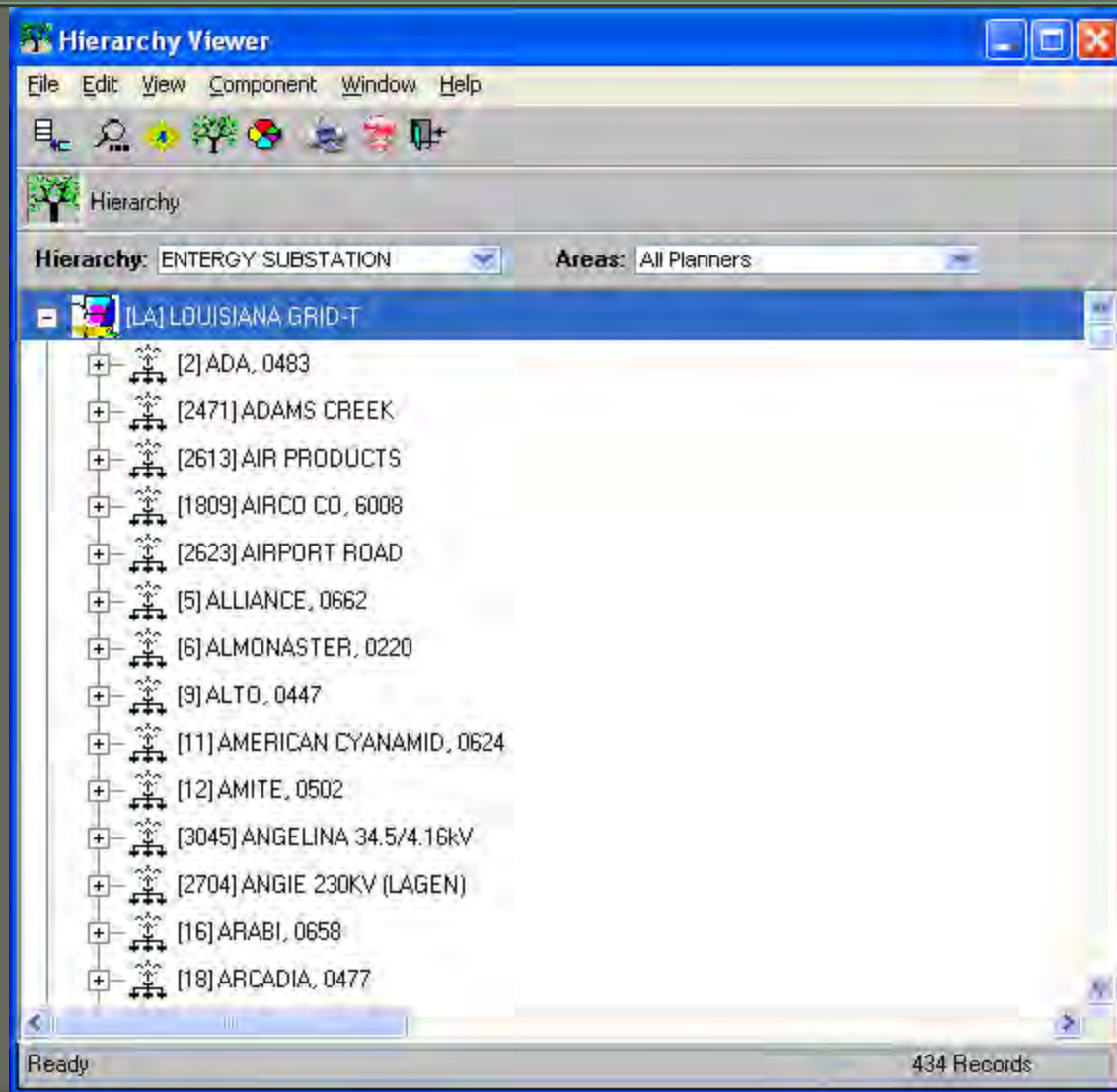
SWMS

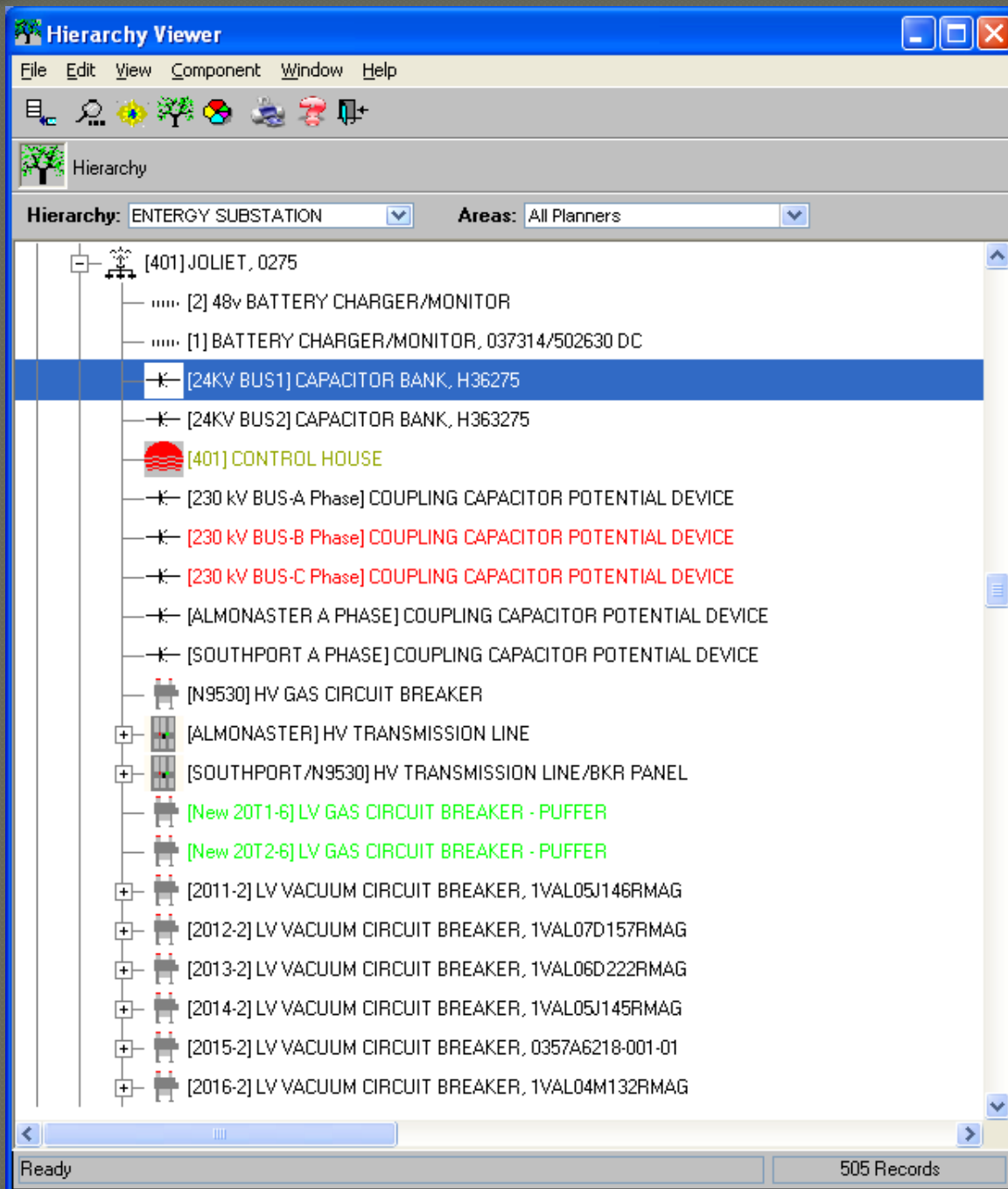


Hierarchy

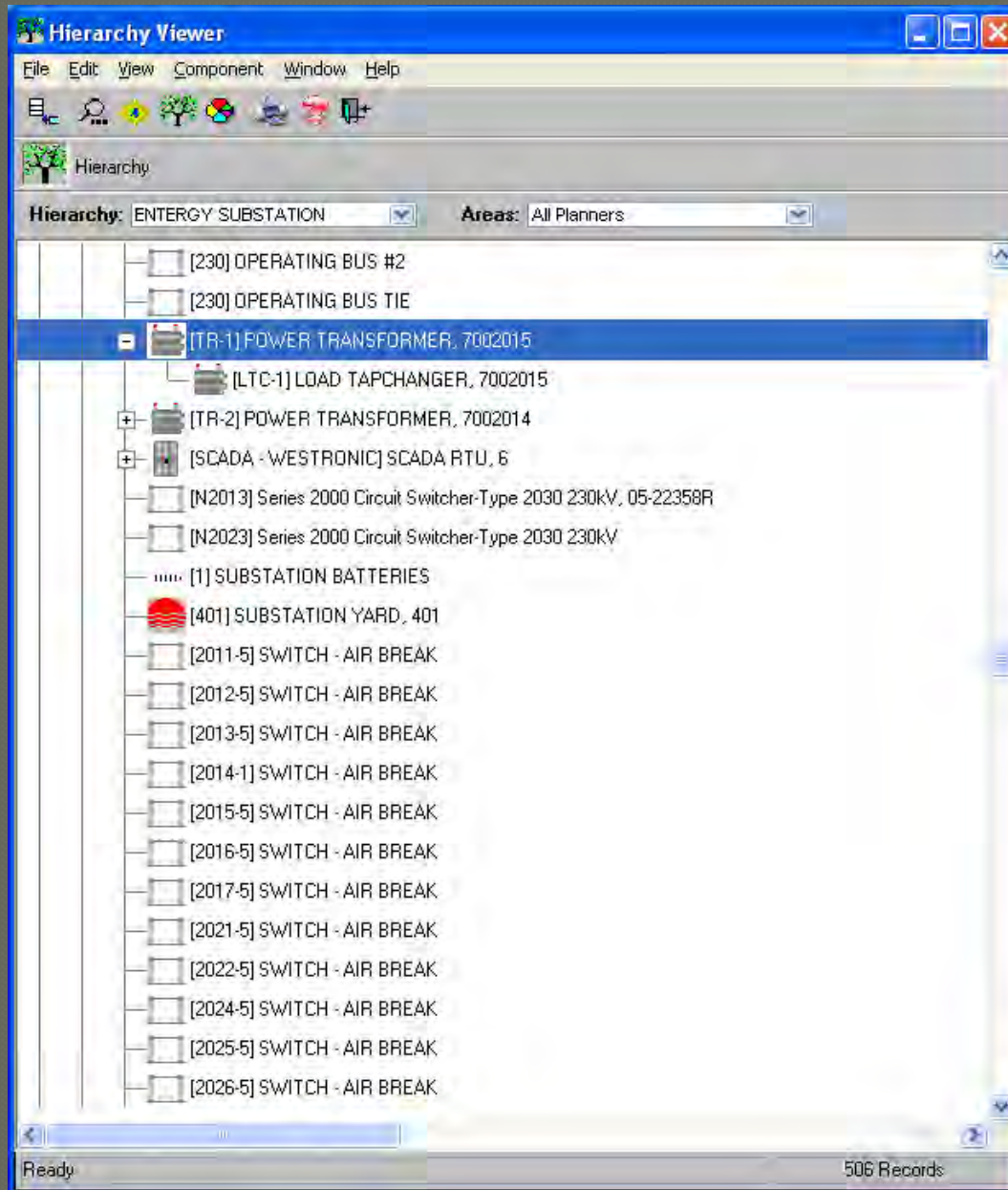


Hierarchy

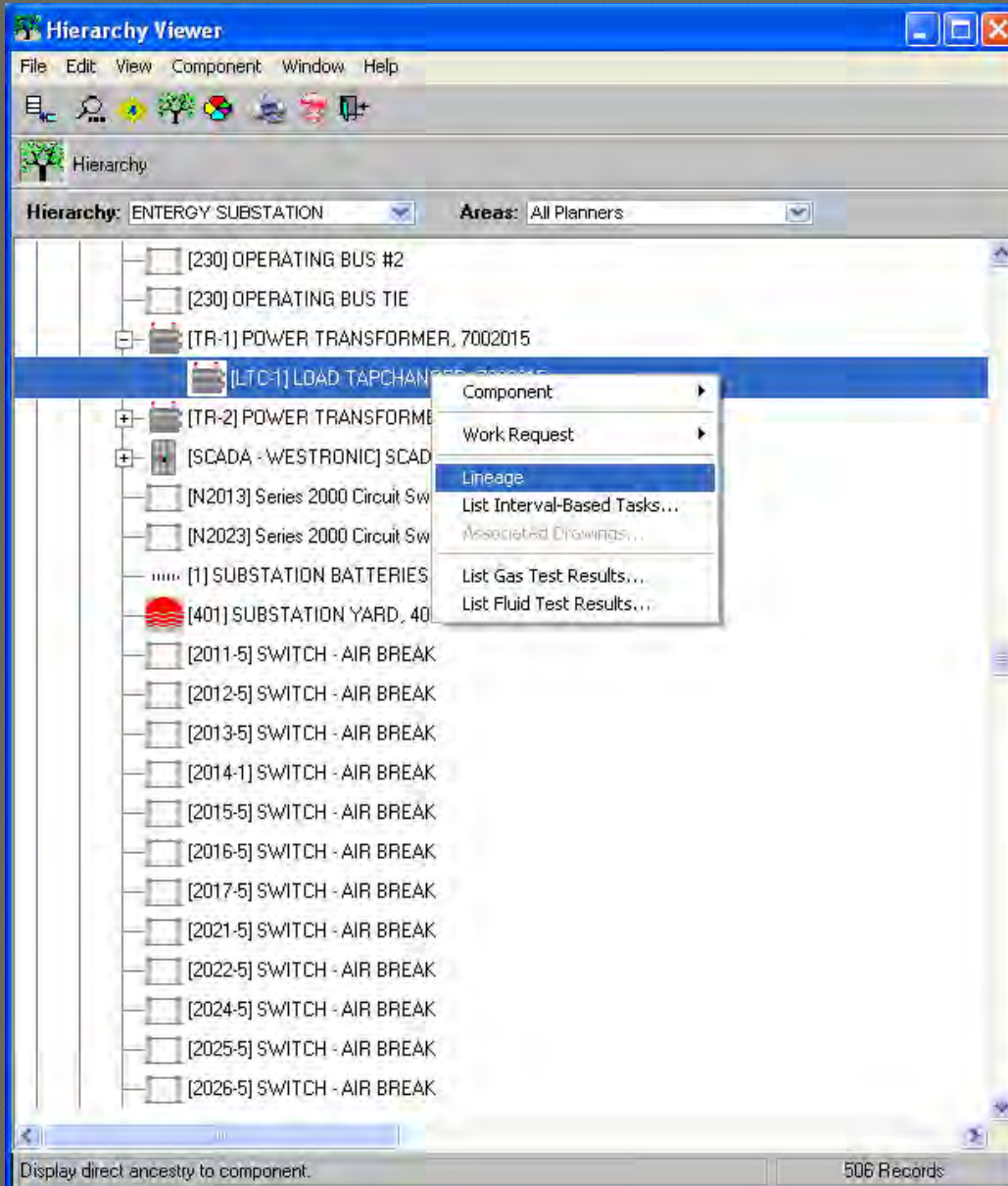




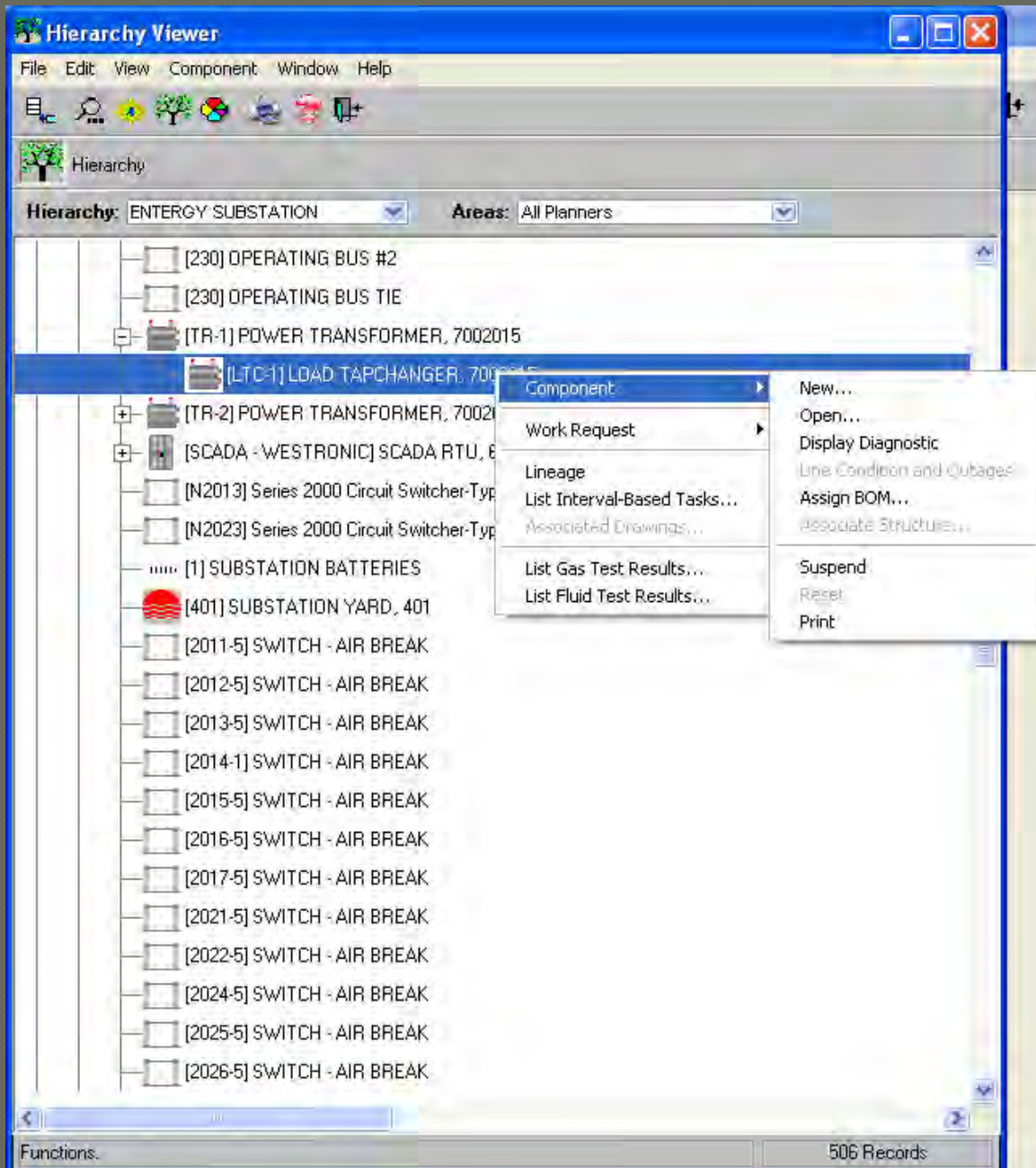
Substation and Equipment

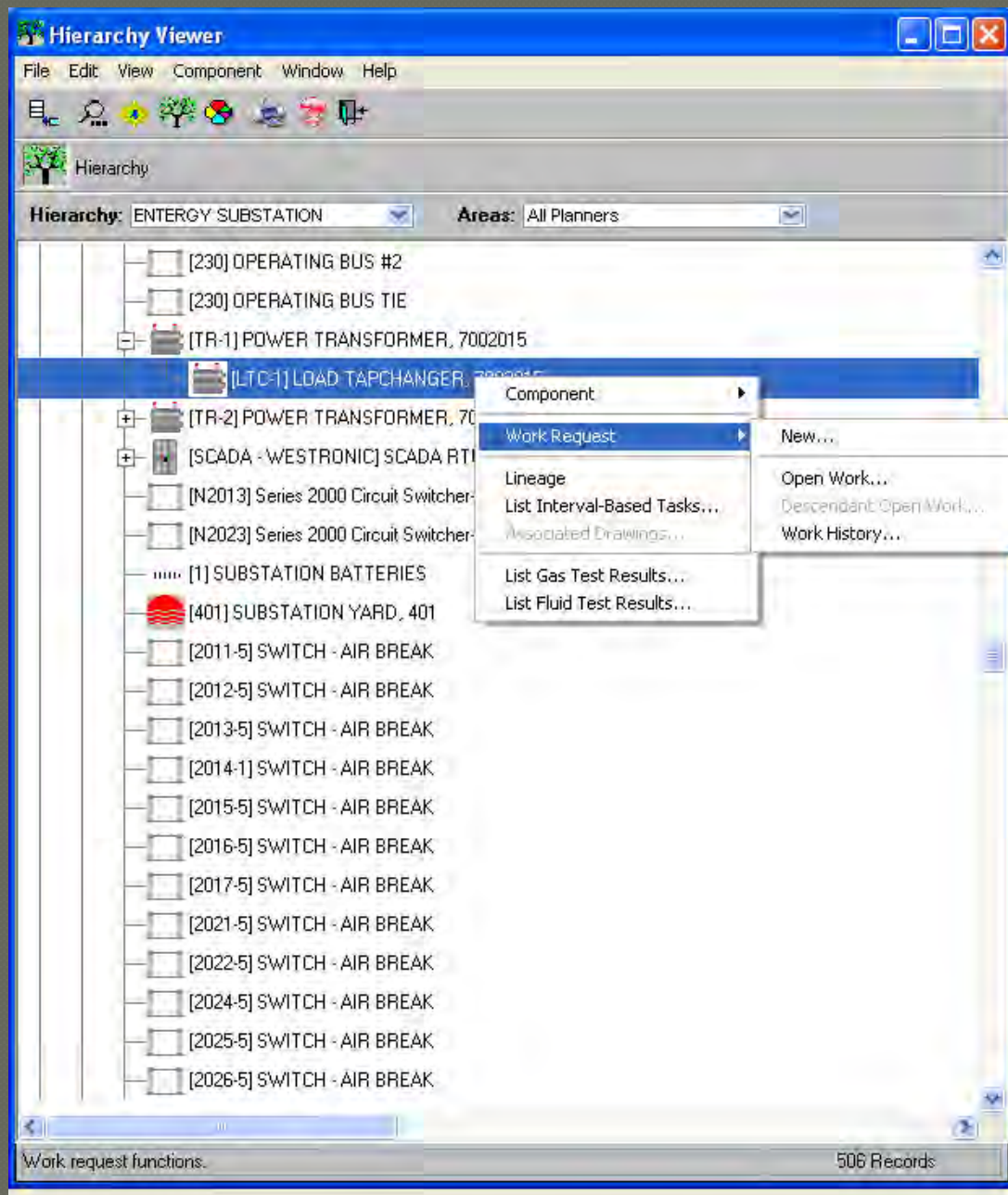


Equipment and Sub-Equipment



Equipment and Sub-Equipment





Cycle Maintenance

Hierarchy Viewer

File Edit View Component Window Help

Hierarchy

Hierarchy: ENTERGY SUBSTATION Areas: All Planners

1000 OPERATING BUS #3

PM Component List

File Window Help

Interval Based Tasks for LOAD TAPCHANGER

Sub Position ID	Component Type	Task Description	Trigger Type	Due Date	Last Maintained	Task Type	Frequency	Trigger Date	Frequency Unit	Template #	
LTC-1	LTC	Oil Dielectric Field Test	I	12/11/2010 08:49:44	12/11/2009	DM	12	12/11/2009	M	17051	LTC
LTC-1	LTC	DGA & Moisture Laboratory Test-LTC	I	08/11/2010 09:37:02	08/11/2009	DM	12	08/11/2009	M	17051	LTC

Ready 2 Records

☐ [2015-5] SWITCH - AIR BREAK
☐ [2016-5] SWITCH - AIR BREAK
☐ [2017-5] SWITCH - AIR BREAK
☐ [2021-5] SWITCH - AIR BREAK
☐ [2022-5] SWITCH - AIR BREAK
☐ [2024-5] SWITCH - AIR BREAK
☐ [2025-5] SWITCH - AIR BREAK
☐ [2026-5] SWITCH - AIR BREAK

List Interval-Based Tasks that apply to this component 506 Records

Ready TSWMS [ryates]

start MapBasic - [p... MapBasic Help 5 Microsoft ... Inbox - Micro... MapInfo ProF... Microsoft Po... SWMS 12.9 PM Compone... 6:28 PM

DGA Data

Hierarchy Viewer

File Edit View Component Window Help

Gas Test Results

File Edit Window Help

Gas Test Results for component:
LOAD TAPCHANGER

Location	Component	Serial Number	Sub	Tank	Sample Date	Water	Pct Combustible	Hydrogen	Methane	Carbon Monoxide	Ethane	Ethylene	Acetylene	Oxygen	Nitrogen	Carbon Dioxide	Total
JOLIET	LOAD TAPCHANGER	7002015	LTC-1	Common	02/11/98	39	0.0484	340	218	107	54	884	3757	30168	73401		1742
JOLIET	LOAD TAPCHANGER	7002015	LTC-1	Common	06/24/99	81	0.0641	921	305	511	86	1152	4144	5606	93286		5134
JOLIET	LOAD TAPCHANGER	7002015	LTC-1	Common	03/21/00	56	0.04	375	168	294	55	731	2967	18659	88133		3350
JOLIET	LOAD TAPCHANGER	7002015	LTC-1	Common	05/23/01	96	0.0873	1064	1551	478	561	4307	2100	17231	83056		4833
JOLIET	LOAD TAPCHANGER	7002015	LTC-1	Common	07/19/01	75	0.0642	1450	398	330	84	710	3259	18450	70466		1960
JOLIET	LOAD TAPCHANGER	7002015	LTC-1	Common	07/24/01	38	0.0319	1093	243	224	35	541	2226	27205	103479		1497
JOLIET	LOAD TAPCHANGER	7002015	LTC-1	Common	03/19/02	70	0.0261	177	42	122	41	529	1747	28519	68691		1807
JOLIET	LOAD TAPCHANGER	7002015	LTC-1	Common	07/09/03	99	0.4617	1447	19482	354	10503	71216	2572	29436	90453		3224
JOLIET	LOAD TAPCHANGER	7002015	LTC-1	Common	08/05/03	66	0.7961	5986	40084	390	55654	186025	14611	13986	59020		4513
JOLIET	LOAD TAPCHANGER	7002015	LTC-1	Common	08/26/03	73	0.0063	210	75	30	15	196	314	38242	93594		995
JOLIET	LOAD TAPCHANGER	7002015	LTC-1	Common	08/20/04	58	0.0407	828	282	131	55	641	2593	24112	80899		1668
JOLIET	LOAD TAPCHANGER	7002015	LTC-1	COMMON	12/01/08	33	0.0134	32	52	101	91	483	451	25619	61232		2172
JOLIET	LOAD TAPCHANGER	7002015	LTC-1	COMMON	08/11/09	55	0.0061	69	35	209	12	132	69	17143	63275		5242
JOLIET	LOAD TAPCHANGER	7002015	LTC-1	COMMON	06/28/09	65	0.0646	191	569	651	528	2472	385	563	65080		3799

Ready 14 Records

[2026-5] SWITCH - AIR BREAK

List Gas Test Results 506 Records

Ready TSWMS (yates)

start MapBasic - [phot... MapBasic Help Microsoft Offi... Inbox - Microsoft... MapInfo Professi... Microsoft Power... SWMS 12.9 6:29 PM

Scheduled Tool

Schedule Administration

Maintenance Area

Zulauf-Metro

Schedules

☐ Yearly Work Plan

☒ Last 30 Days

☐ All

Start Date	End Date	Description
3/21/10	3/27/10	Zulauf-Metro
3/28/10	4/3/10	Zulauf-Metro
4/4/10	4/10/10	Zulauf-Metro
4/11/10	4/17/10	Zulauf-Metro
4/18/10	4/24/10	Zulauf-Metro
4/25/10	5/1/10	Zulauf-Metro
5/2/10	5/8/10	Zulauf-Metro

Schedule Detail

Description: Zulauf-Metro

Start Date: 04/18/2010 End Date: 04/24/2010

Supervisor: Zulauf-Metro

Employee: clear

Publish ☒ This schedule has been published and cannot be modified.

Est. Hrs. to be scheduled: 400

Time Off: 60

Est. Dock Time: 12

Est. Travel Time: 28

Format: Scheduled Field Work Report

View

New

Save

Cancel

Rebuild

Print

PDF

Legend:

Already published - cannot be modified

Ready for publishing

Suspended

Display suspended

Work Schedule

Substation Work Schedule Report

File



Substation Work Schedule Report

As of 4/18/2010 18:33:19

Report Start Date: 4/18/2010 Report End Date: 4/24/2010

Supervisor: Zulauf-Metro

Black Pending WR scheduled with date in range
 Red Pending WR with scheduled date not in range
 Green Closed WR with scheduled date in range
 Green Closed WR with scheduled date not in range
 Yellow Constrained WR with scheduled date in range
 Yellow Constrained WR with scheduled date not in range

Date Scheduled	Resource	Location	Work Request	Device ID	Component Description	Task Description	Problem Description	Priority	Task	Est. Hours	Actual	AORS #	AORS Approve	SERC
04/19/2010	Bourgeois, Steven P	DERBIGNY	1532140	N7113	HV GAS CIRCUIT BREAKER	Air Compressor Maintenance (Annual)	Breakers, SF6 Gas, 161-230kV w/Comp - HV GAS CIRCUIT BREAKER : H242A2135-201	3	PM	0		N	N	
04/19/2010	Bourgeois, Steven P	DERBIGNY	1531587	N7214	HV OIL CIRCUIT BREAKER	Air Compressor Maintenance (Annual)	Breakers, Oil, 161-230kV w/Comp - HV OIL CIRCUIT BREAKER : 41-30341-1011	3	PM	0		N	N	
04/19/2010	Bourgeois, Steven P	DERBIGNY	1532261	N9702	HV OIL CIRCUIT BREAKER	Air Compressor Maintenance (Annual)	Breakers, Oil, 161-230kV w/Comp - HV OIL CIRCUIT BREAKER : 41-30341-1044	3	PM	0		N	N	
04/19/2010	Bourgeois, Steven P	JOLIET	1586805	2021-2	LV VACUUM CIRCUIT BREAKER	Switching	Switching to allow for maintenance of breaker.	3	ST	0		U	N	
04/19/2010	Bourgeois, Steven P	JOLIET	1533762	2021-2	LV VACUUM CIRCUIT BREAKER	Maintenance and Acceptance Tests	Breakers, Vacuum, <=24kV, Line - LV VACUUM CIRCUIT BREAKER : 1VAL06H159RMAG	3	PM	0		N	N	
04/19/2010	Bourgeois, Steven P	LABARRE (LPL)	1531655	S7942	HV GAS CIRCUIT BREAKER	Air Compressor Maintenance (Annual)	Breakers, SF6 Gas, 161-230kV w/Comp - HV GAS CIRCUIT BREAKER : A03659	3	PM	0		N	N	
04/19/2010	Bourgeois, Steven P	LABARRE	1531714	S7944	HV GAS CIRCUIT	Air Compressor	Breakers, SF6 Gas,	3	PM	0		N	N	