

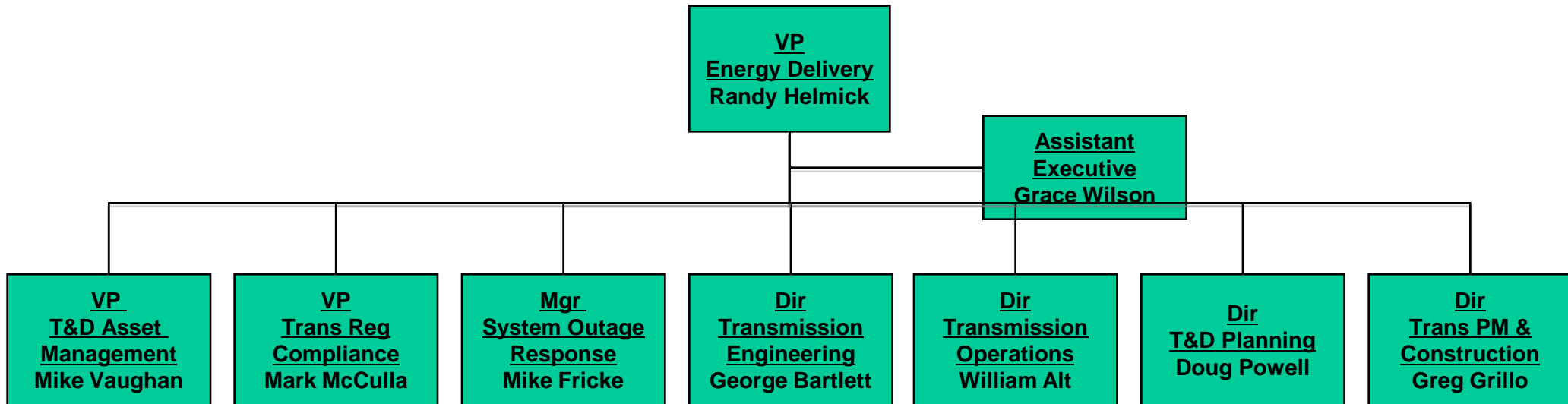
**“Meeting with Entergy and Iraq Ministry of
Electricity Delegation on Transmission &
Distribution Issues”**

Entergy Corporation
New Orleans, LA
April 19, 2010

Agenda

- **Introductions - All – 9.30 AM(10 mins)**
- **Overview of Entergy System – Sharma Kolluri/George Bartlett – 9.40 AM(20 mins)**
- **Overview of Entergy Transmission System and Operations – George Bartlett – 10 AM(1 hour)**
- **Overview of Entergy Distribution Systems and Operations – Dennis Dawsey – 11 AM(1 hour)**
- **Lunch – 12 NOON(30 mins)**
- **Transmission/Substation Maintenance Issues - Ray Yates – 12.30 PM(30 mins)**
- **General Discussion – ALL -1.00 PM(30 mins)**
- **Visit to Entergy Substation – Ray Yates/Mookie Chander – 1.30PM**
- **Drop off at Whitney Bank Hotel, 610 Poydras St. – 3.30 PM**

Energy Delivery

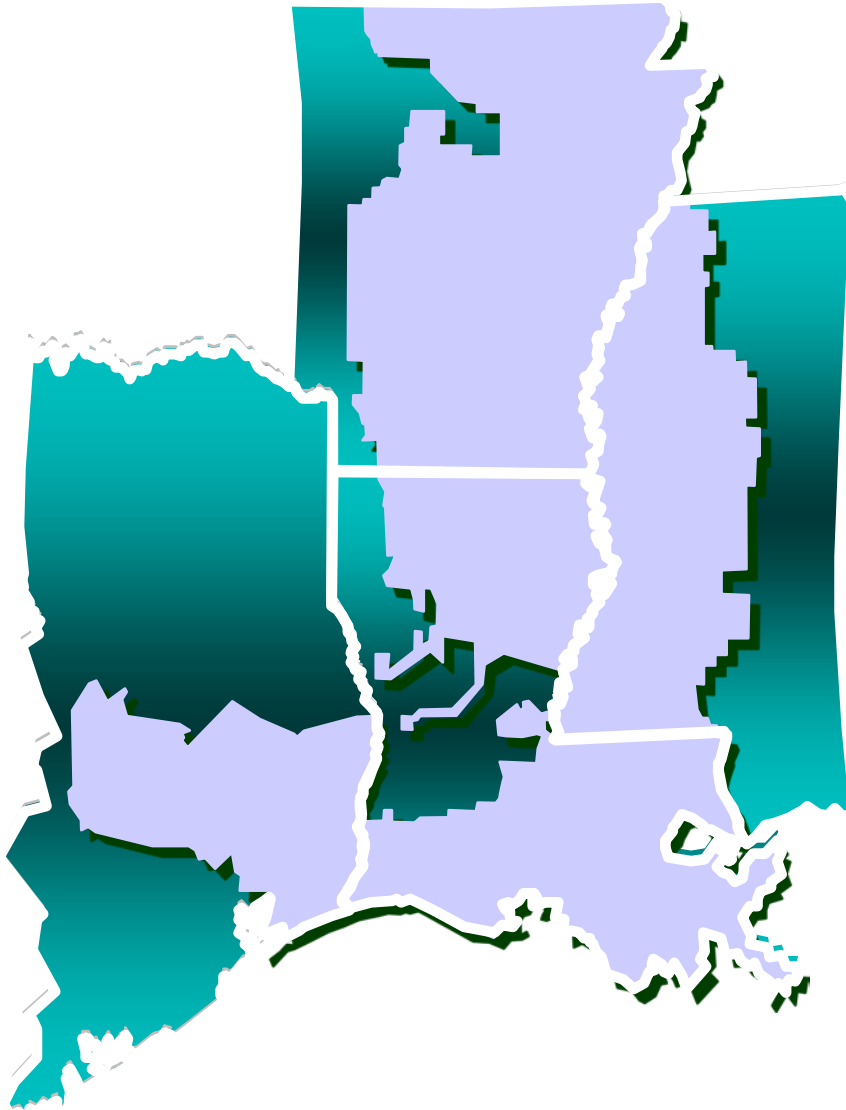


Entergy Service Territory

- 112,000 mi²
- 6 regulatory jurisdictions
- Swampy delta to mountainous Ozarks (~550 miles)
- East Louisiana to east Texas (~500 miles)
- Subject to hurricanes, tornadoes, ice storms, blizzards, floods
- Peninsular service areas (*i.e.*, east Texas, south Louisiana)



Regulated U. S. Utility Business



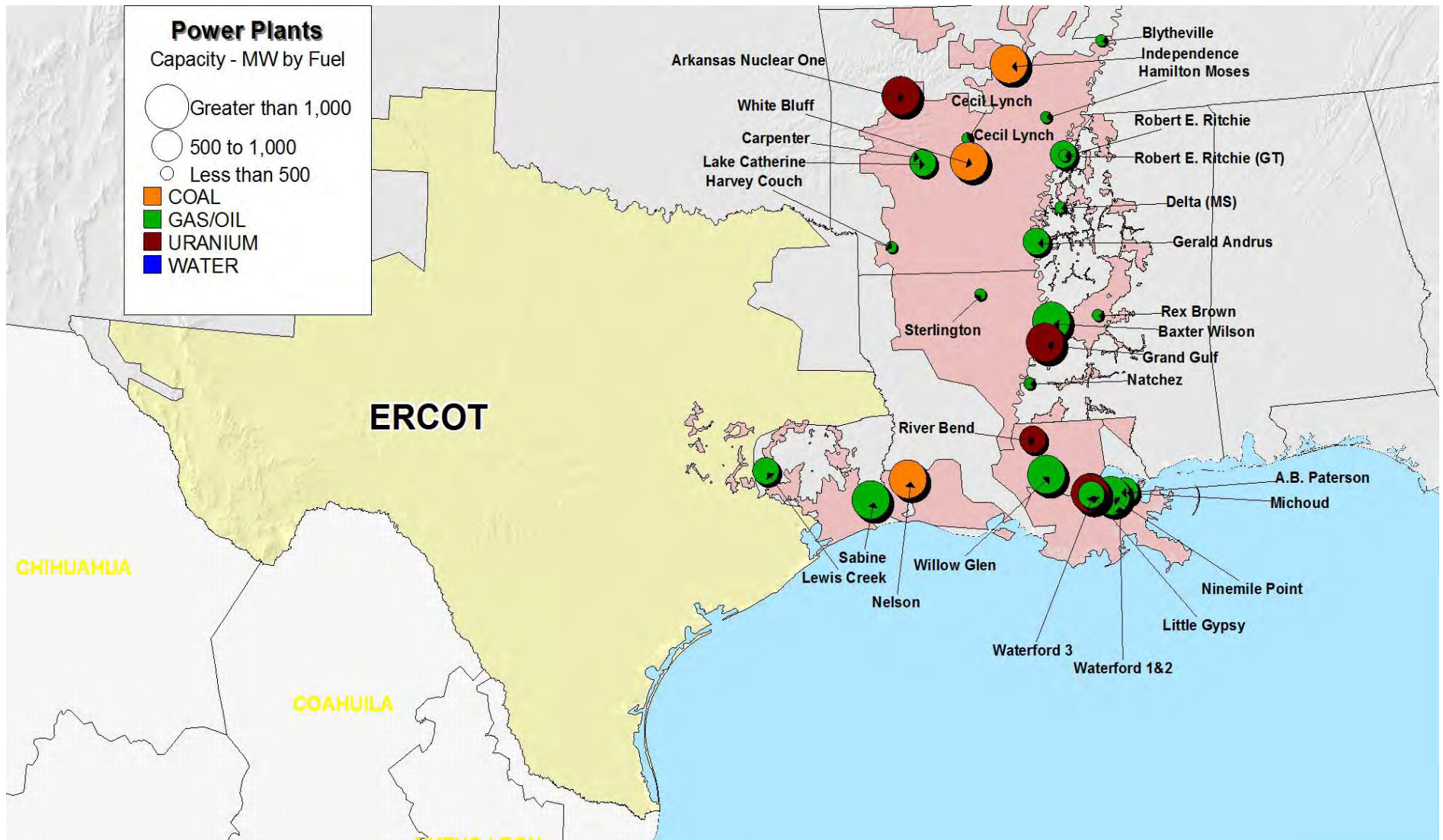
- **2.449 Million U. S. Customers**
- **4 States**
 - » Arkansas
 - » Louisiana
 - » Mississippi
 - » Texas
- **112,000 sq. miles**
- **43 Transmission Service Customers**

Entergy's System

- Over 15,000 miles of transmission lines in four states
- 1,550 substations
- 36,000 MW of connected generation
 - 24,000 MW Entergy-owned
 - 12,000 MW merchant-owned
- 28,000 MW of load



Entergy Plants

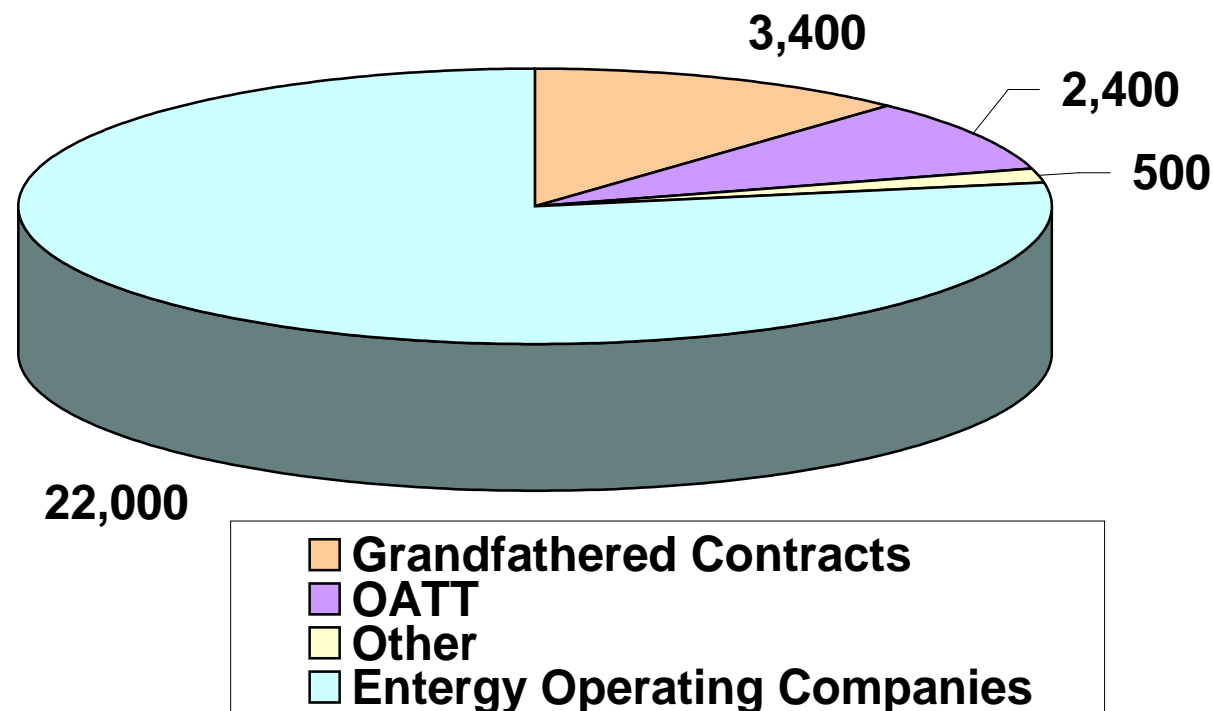


Load Within the Entergy Control Area

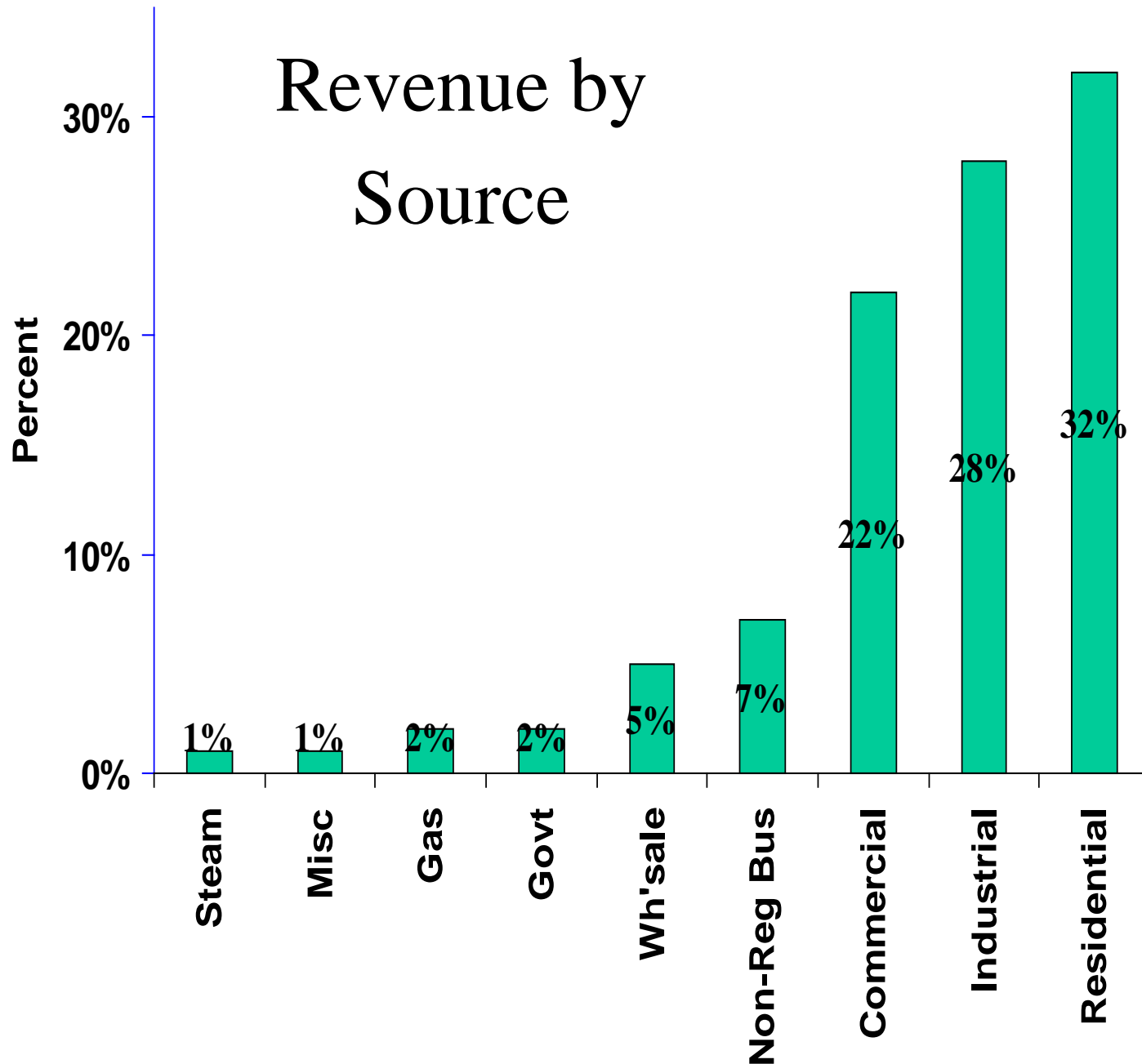
Entergy Operating Companies: ~22,000MW

Transmission Dependent Customers

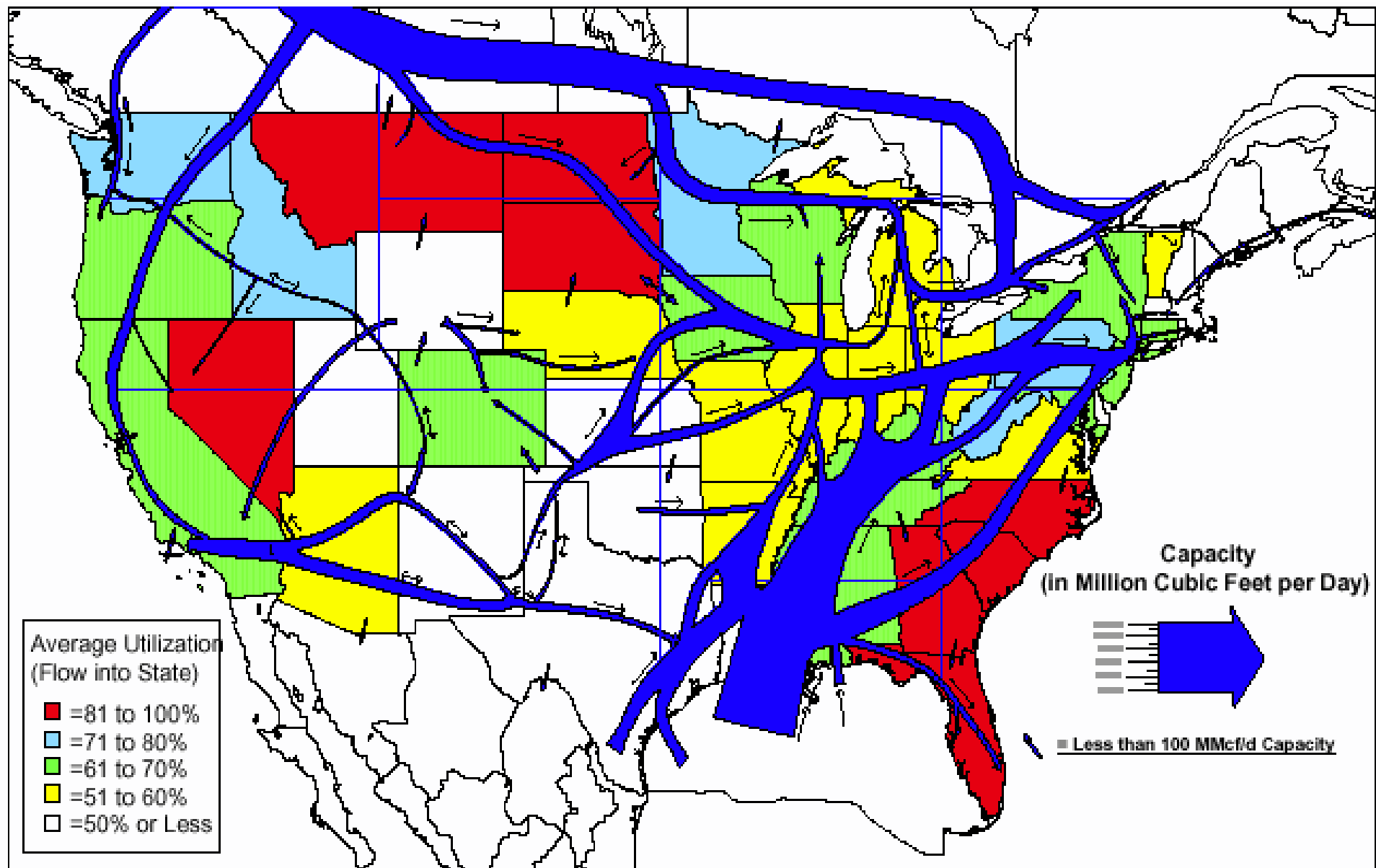
- 7 with “grandfathered” contracts: 3,400MW
- 5 with network service agreements under OATT: 2,400MW
- 15 with other transmission contracts: 500MW



Customer Base



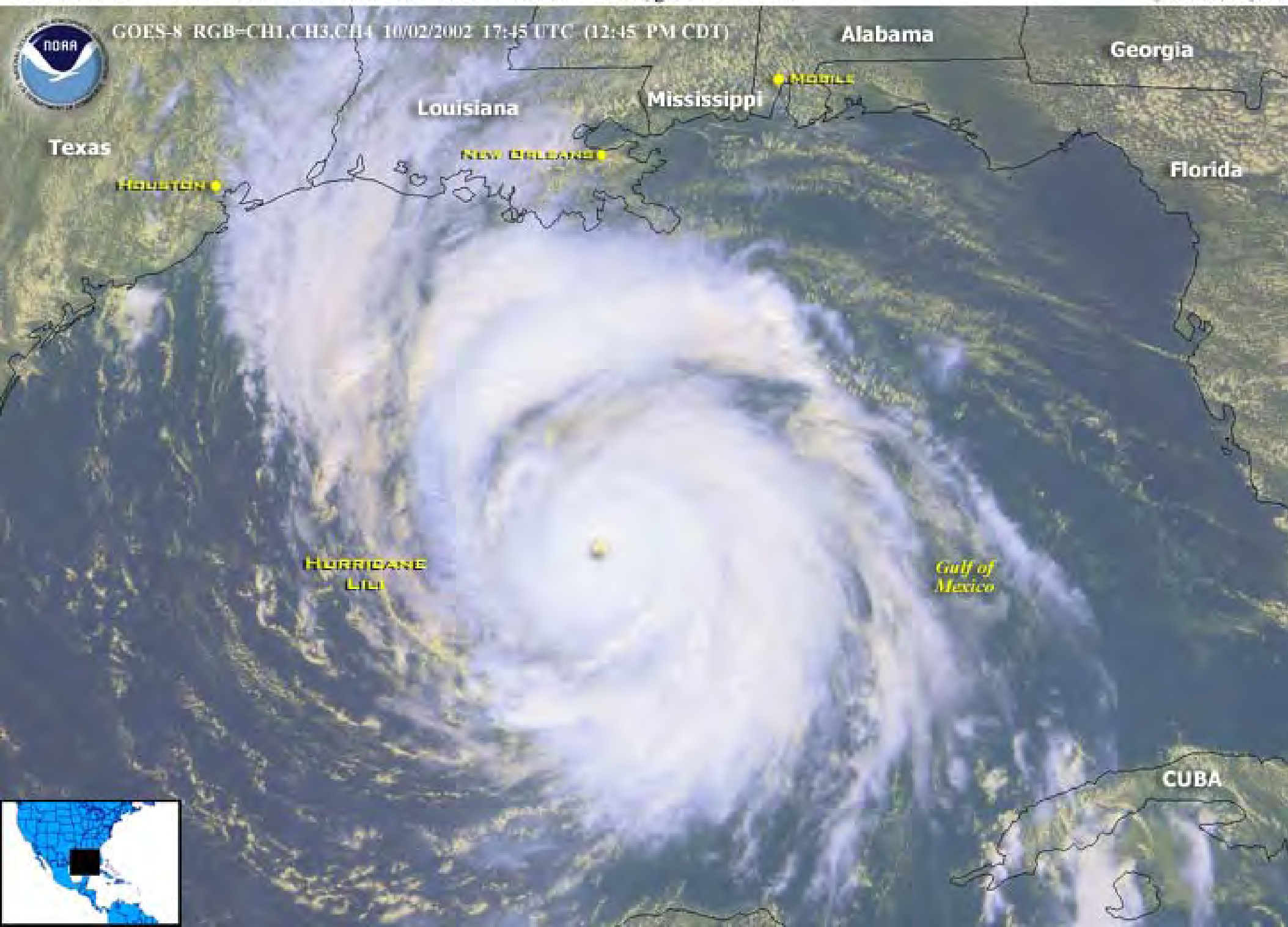
U.S. Natural Gas Pipeline Transportation Corridors and Average Interstate Pipeline Utilization Rates by State, 1999



Source: Energy Information Administration

Hurricane Lili was located over the Gulf of Mexico near 25.3N 89.4W at 18:00 UTC. Lili has been moving northwestward at 13 knots with maximum sustained winds estimated at 115 knots, gusts to 140 knots.

CREDIT: NOAA



Questions?