

# Safety Performance Metrics

**December 2009**  
**With Quarterly Comparisons**

# Safety Performance Metrics

## December 2009

	OSHA Recordable (YTD)	2009 Limit Rate	OSHA Recordable Rate	OSHA Lost Time (YTD)	2009 Limit Rate	OSHA Lost Time Rate	PVA (YTD)	PVA Rate	MVA (YTD)	2009 Limit Rate	MVA Rate
District	105	5.5	5.5	15	0.8	0.8	47	7.1	32	8.0	4.8
Corporate Services	1	0.0	1.1	0	0.0	0.0	0	0.0	0	0.0	0.0
Customer Services	26	6.4	5.6	4	0.6	0.9	10	7.9	8	12.0	6.3
Distribution Services	57	8.7	9.7	9	1.9	1.5	25	7.0	14	7.8	3.9
Energy Supply	7	4.0	2.6	0	0.3	0.0	7	6.0	7	4.1	5.2
Internal Services	12	4.1	3.5	2	0.0	0.6	5	10.7	3	13.1	6.4
Technology	2	0.8	1.2	0	0.0	0.0	0	0.0	0	0.0	0.0

OSHA Recordable Rate:

# of Recordable Cases x 200,000

Total number of hours worked

\*\*\*\*\*

Lost Time Rate:

# of Lost-time Cases x 200,000

Total number of hours worked

\*\*\*\*\*

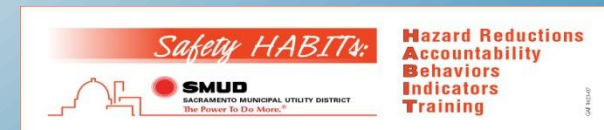
Motor Vehicle Accident (MVA) Rate :

# of Accidents\* x 1,000,000

\* Accidents that exceed \$750 in damage

Total number of miles driven

## SD-6 Safety Metrics



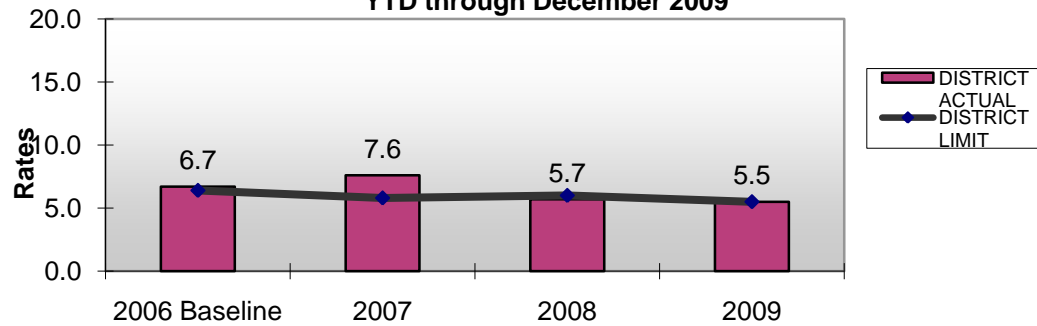
**SMUD**

Sacramento Municipal Utility District

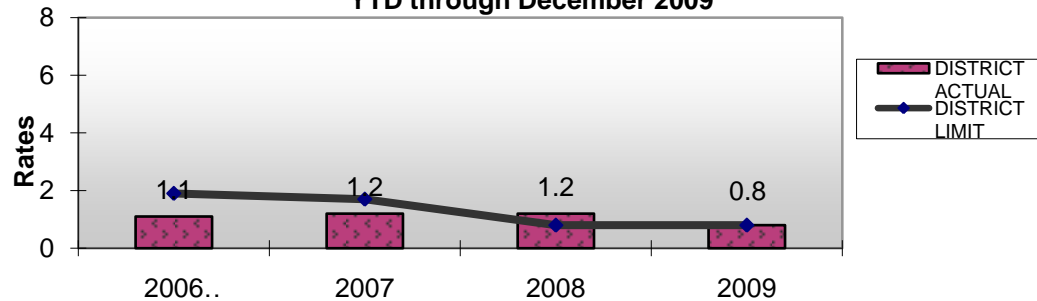
**2009 District Safety Performance - Final**

Cost Center		OSHA Recordable Count	2009 Limit Rate	OSHA Recordable Rate	OSHA Lost Time	2009 Limit Rate	OSHA Lost Time Rate	PVA	PVA Rate	MVA	2009 Limit Rate	MVA Rate
SMUD	District Total	105	5.5	5.5	15	0.8	0.8	47	7.1	32	8	4.8
Corporate Services		1	0	1.1	0	0	0.0	0	0.0	0	0	0
CC 737	Legislative & Reg	1		5.7	0		0.0	0	0.0	0		0
Customer Services		26	6.4	5.6	4	0.6	0.9	10	7.9	8	12	6.3
CC 503	Cust Lead & Bus Svs	1		3.2	0		0.0	0	0	0		0
CC 506	Financial Services	3		5.6	1		1.9	0	0	0		0
CC 508	Field Services	13		12.9	3		3.0	9	8.5	7		6.6
CC 510	Sales & Service	4		3.5	0		0.0	0	0	0		0
CC 522	Strategic Operations	1		3.1	0		0.0	0	0	0		0
CC 540	Comm & Community Rel	3		8.1	0		0.0	0	0	0		0
CC 560	Programs & Services	1		1.1	0		0.0	1	7.2	1		7.2
Distribution Services		57	8.7	9.7	9	1.9	1.5	25	7.0	14	7.8	3.9
CC 877	COE Business Tech	3		5.4	0		0.0	1	X	0		0
CC 886	COE Design	4		3.0	0		0.0	1	2.8	0		0
CC 887	COE Work Performance	50		13.8	9		2.5	23	7.5	14		4.6
Energy Supply		7	4	2.6	0	0.3	0.0	7	6.0	6	4.1	5.2
CC 460	Generation Design	0		0	0		0.0	2	12.0	2		12.0
CC 461	Generation Maint	4		5.3	0		0.0	5	5.4	4		4.3
CC 464	RS Nuclear Oper Fuel	1		9.3	0		0.0	0	0	0		0
CC 465	RS Indus Decommissng	1		9.4	0		0.0	0	0	0		0
CC 728	Systems Ops & Reliab	1		1.4	0		0.0	0	0	0		0.0
Internal Services		12	4.1	3.5	2	0	0.6	5	10.7	3	13.1	6.4
CC 336	Transportation	1		3.4	1		3.4	0	0	0		0
CC 338	Facilities	6		7.4	0		0.0	3	22.6	3		22.6
CC 339	Rancho Seco Park	1		13.4	1		13.4	1	42.2	0		0
CC 340	Supply Chain Svcs	1		2.1	0		0.0	0	0	0		0
CC 344	Security Operations	1		2.3	0		0.0	1	6.1	0		0
CC 644	Controller & Acctg	2		4.0	0		0.0	0	X	0		X
Business Technology		2	0.8	1.2	0	0	0.0	0	0	0	0	0
CC 375	Tech Resource Center	2		1.2	0		0.0	0	0	0		0

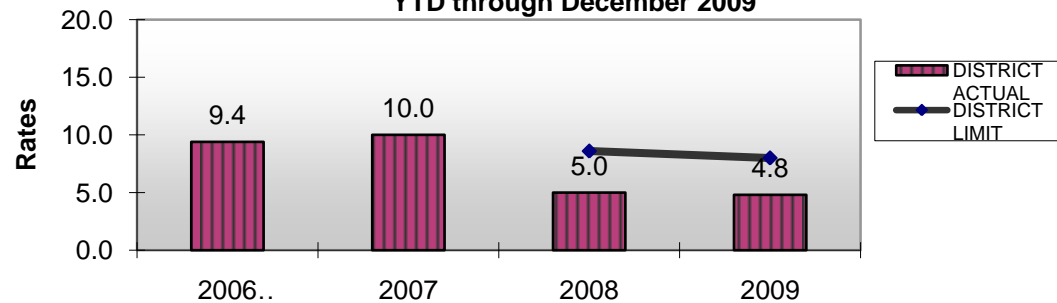
### District OSHA Recordable Rates YTD through December 2009



### District Lost Time Rates YTD through December 2009



### District Motor Vehicle Accident Rates YTD through December 2009



# December Injury Summary

<b>(3) SOFT TISSUE INJURIES – Cumulative</b>		
<b>Related Work Task/Cause</b>	<b>Occupation</b>	<b>Work Group</b>
<u>Work Station Usage</u> Not specified Not specified	Office Tech Sr. Office Specialist	Communications & Advertising Credit
<u>Field Work</u> Blowing leaves	Utility Worker	Facilities Maintenance
<b>(1) SOFT TISSUE INJURIES – Acute</b>		
<b>Related Work Task/Cause</b>	<b>Occupation</b>	<b>Work Group</b>
<u>Field Work</u> Not specified	Lineman – Appr	Distribution Services
<b>(3) Abrasion, Puncture, Cut or Contusion</b>		
<b>Related Work Task/Cause</b>	<b>Occupation</b>	<b>Work Group</b>
<u>Field Work</u> Removing meter Closing meter cabinet Removing meter seal	Lineman Sr. Meter Reader Meter Tech	Distribution Services Field Services Distribution Services
<b>(1) Trauma</b>		
Field Work Cutting chain with bolt cutters	Cust Svcs Field Rep	Customer Services

# Serious Safety Incidents

## December

**December 10 – CS**

**Field Rep was cutting chain with bolt cutters and metal hit eye**

**December 10 – DS**

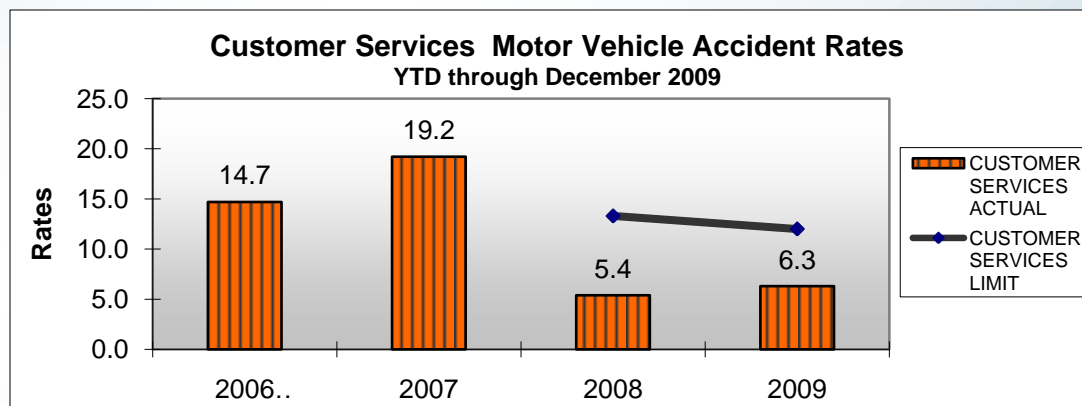
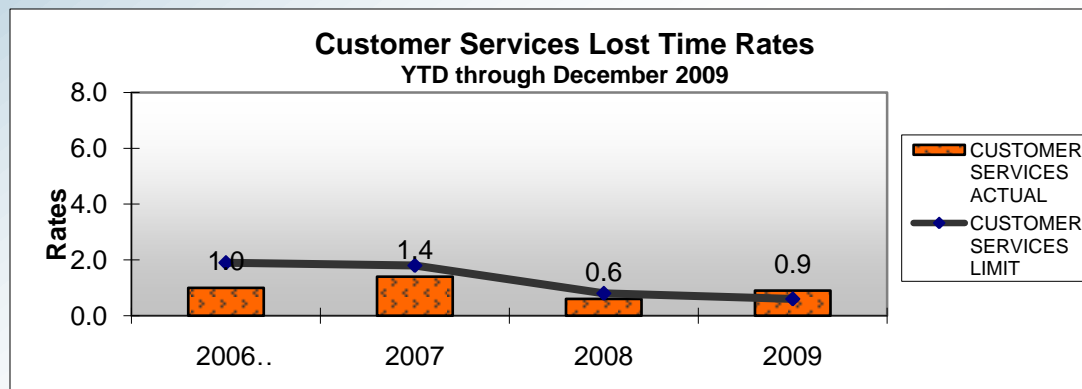
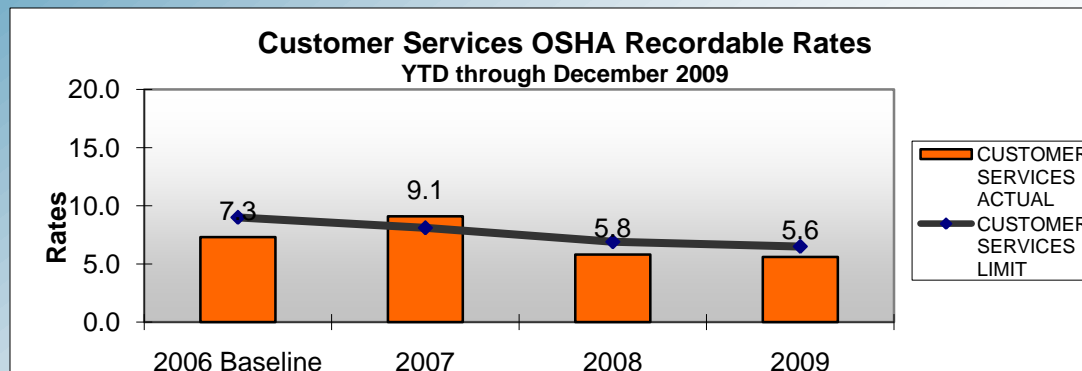
**Lineman removing meter cover cut hand and forearm.**

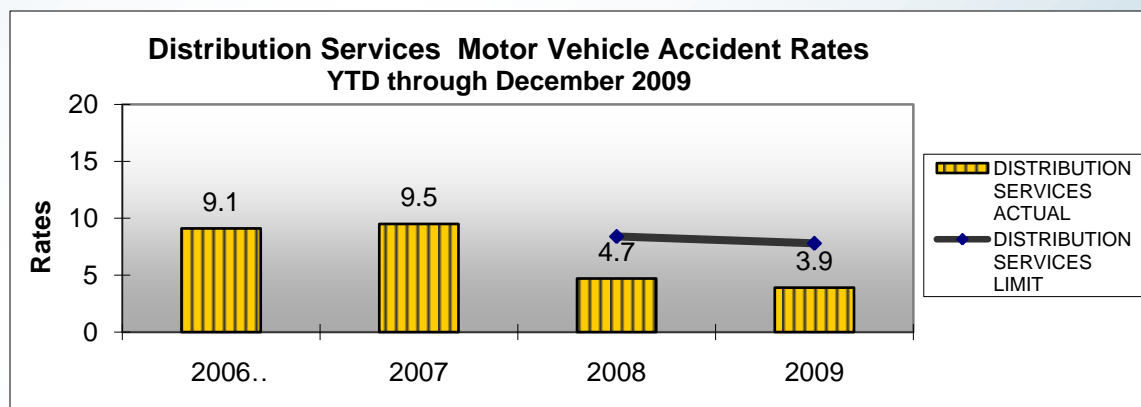
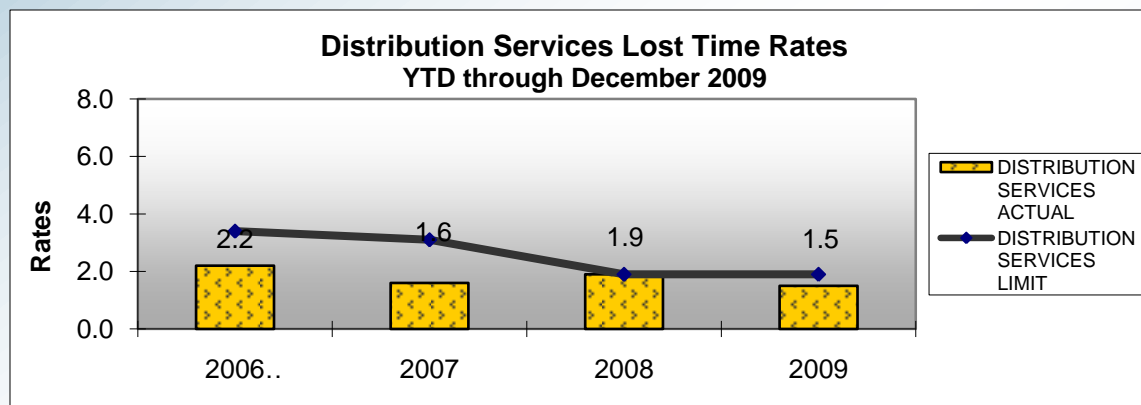
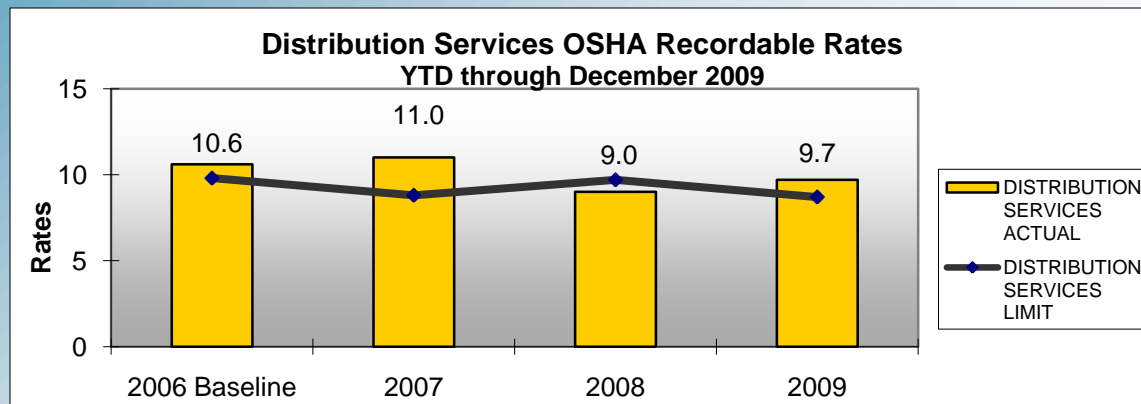
# December Vehicle Accident Summary

Business Unit	Type	Cause	MVA	PVA
Field Services	Collision with vehicle moving in same direction	Driver distraction - cell phone, eating, etc.	Y	Y
Work Performance	Other - non-collision	Bumper made contact with ground while vehicle was descending from embankment at top of hil	N	N
	Backing into object or vehicle	Failure to leave sufficient room	Y	Y
	Backing into object or vehicle	Other	Y	Y
Facilities	Running into/sideswiping object at roadside	Failure to leave sufficient room	Y	Y
Security	Running into/sideswiping object at roadside	Failure to leave sufficient room	N	Y

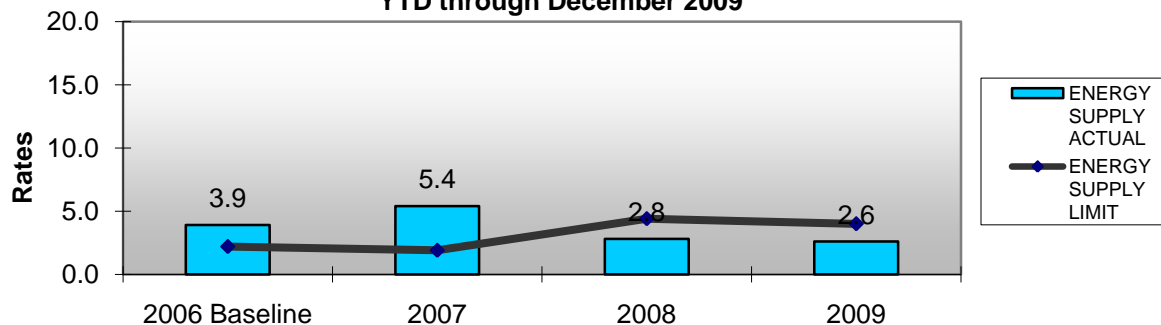
DEPARTMENT	2006 LIMIT	2006 ACTUALS	2007 LIMIT	2007 ACTUALS	2008 LIMIT	2008 ACTUALS	2009 LIMIT	2009 ACTUALS
<b>DISTRICT</b>								
RECORDABLE	124	136	112	154	123	113	112	105
LOST TIME	36	22	33	24	17	24	16	15
MVA'S	*N/A	78	*N/A	67	71	37	66	32
<b>CORPORATE SERVICES</b>								
RECORDABLE	0	0	0	1	0	0	0	1
LOST TIME	0	0	0	0	0	0	0	0
MVA'S	*N/A	0	*N/A	0	0	0	0	0
<b>CUSTOMER SERVICE</b>								
RECORDABLE	45	37	41	46	35	29	33	26
LOST TIME	10	5	9	7	4	3	3	4
MVA'S	*N/A	22	*N/A	24	20	8	18	8
<b>DISTRIBUTION SERVICES</b>								
RECORDABLE	52	68	47	71	62	56	56	57
LOST TIME	18	14	17	10	12	12	12	9
MVA'S	*N/A	42	*N/A	34	39	19	36	14
<b>ENERGY SUPPLY</b>								
RECORDABLE	7	12	6	16	11	8	10	7
LOST TIME	3	1	2	4	1	0	1	0
MVA'S	*N/A	7	*N/A	4	6	3	6	6
<b>INTERNAL SERVICES</b>								
RECORDABLE	16	18	14	16	13	19	12	12
LOST TIME	5	2	4	2	0	9	0	2
MVA'S	*N/A	7	*N/A	4	6	7	6	3
<b>BUSINESS TECHNOLOGY</b>								
RECORDABLE	2	1	2	4	2	1	1	2
LOST TIME	0	0	0	1	0	0	0	0
MVA'S	*N/A	0	*N/A	1	0	0	0	0



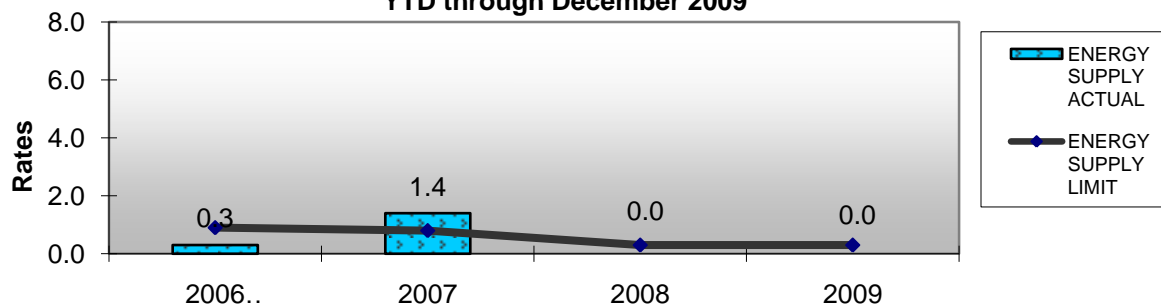




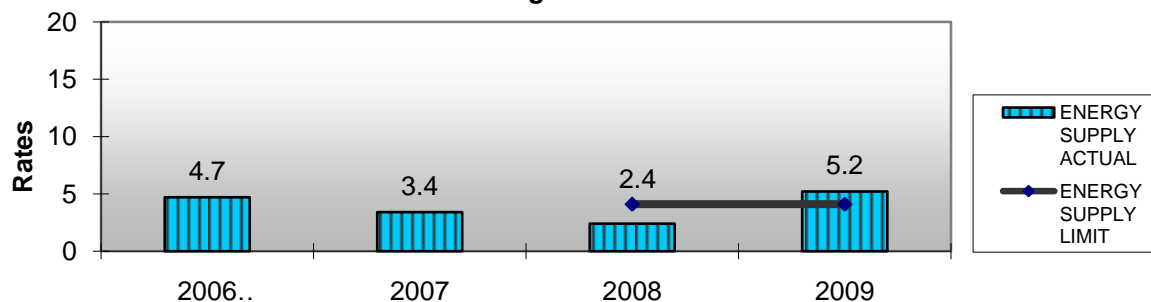
**Energy Supply OSHA Recordable Rates  
YTD through December 2009**



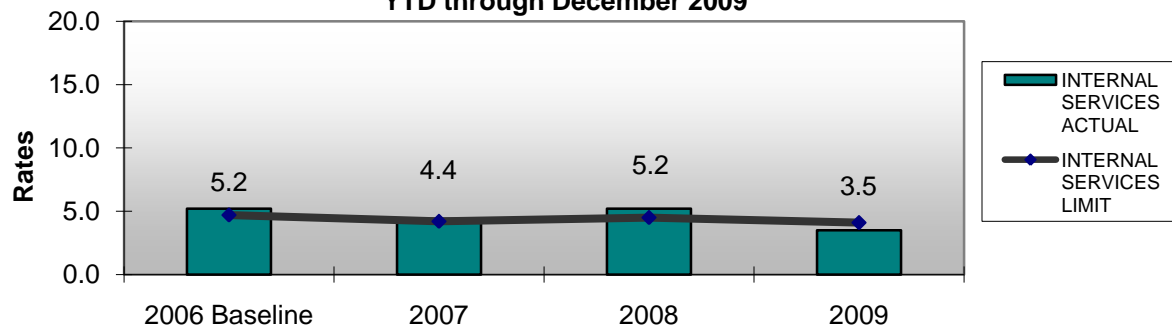
**Energy Supply Lost Time Rates  
YTD through December 2009**



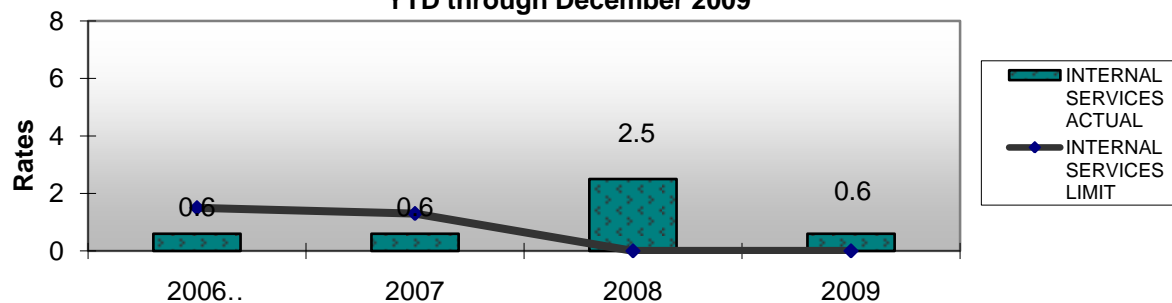
**Energy Supply Motor Vehicle Accident Rates  
YTD through December 2009**



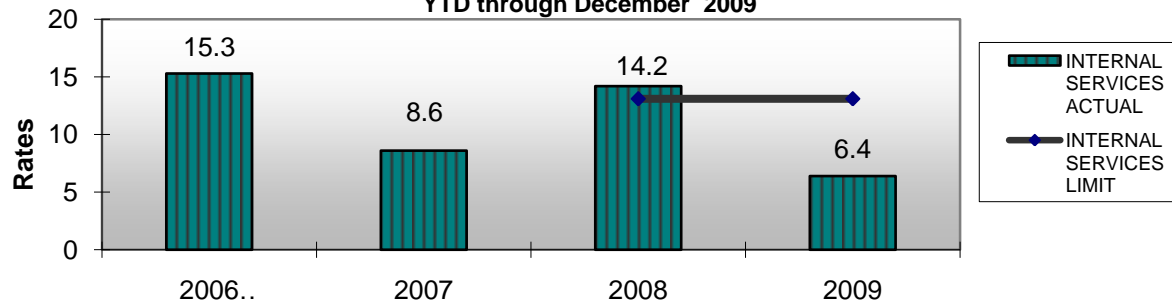
### Internal Services Recordable Rates YTD through December 2009

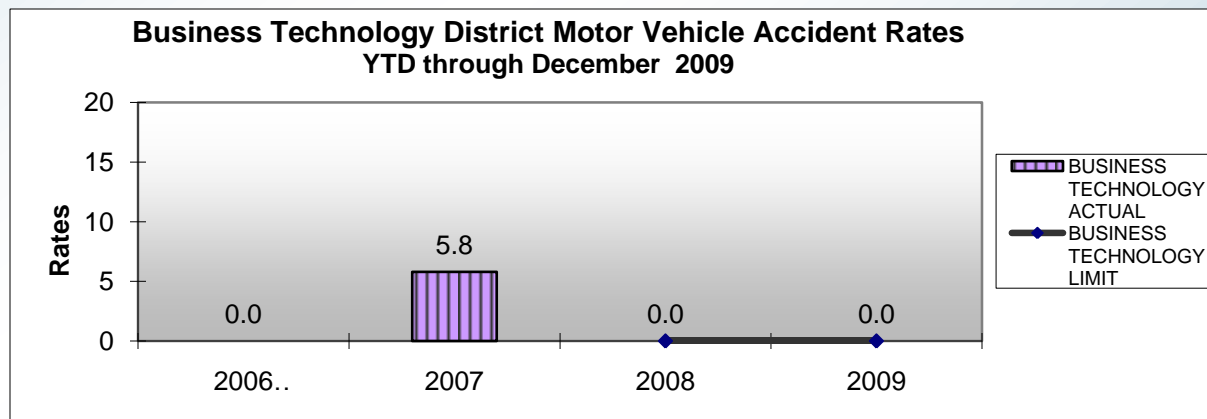
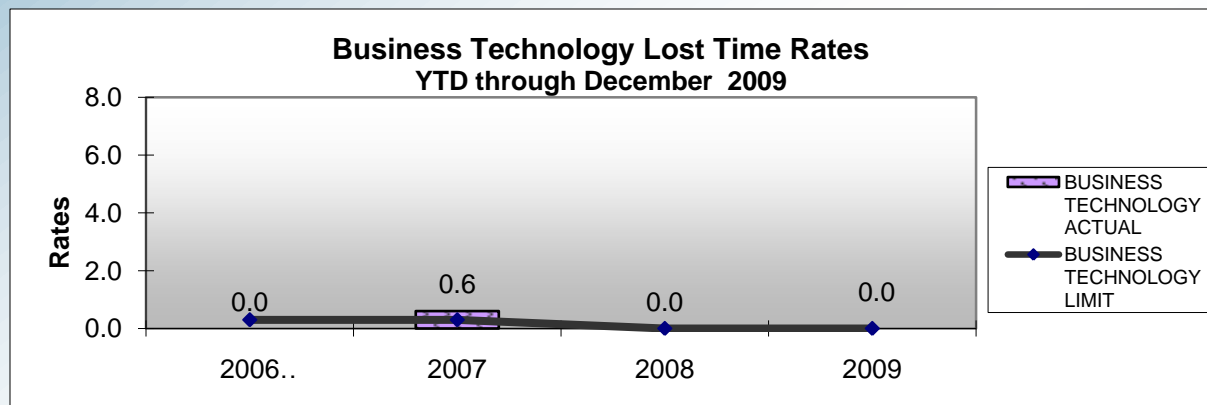
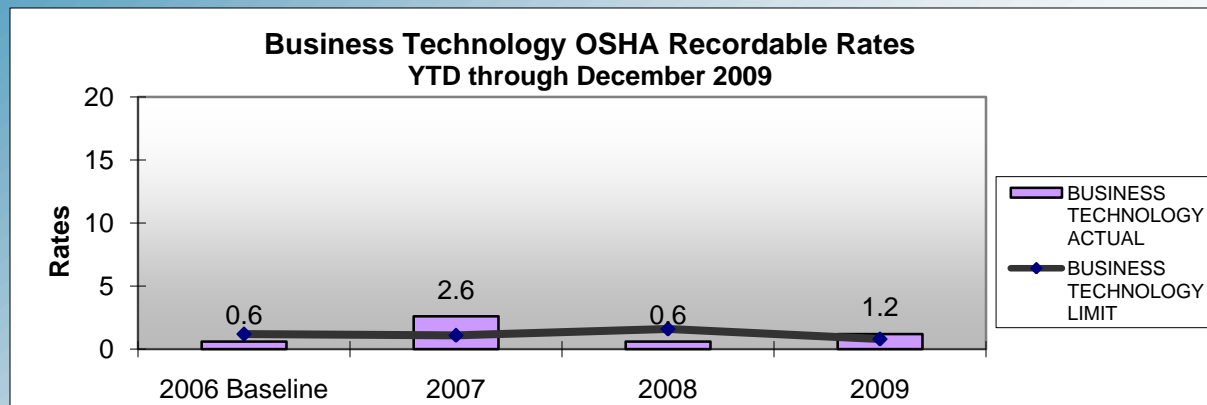


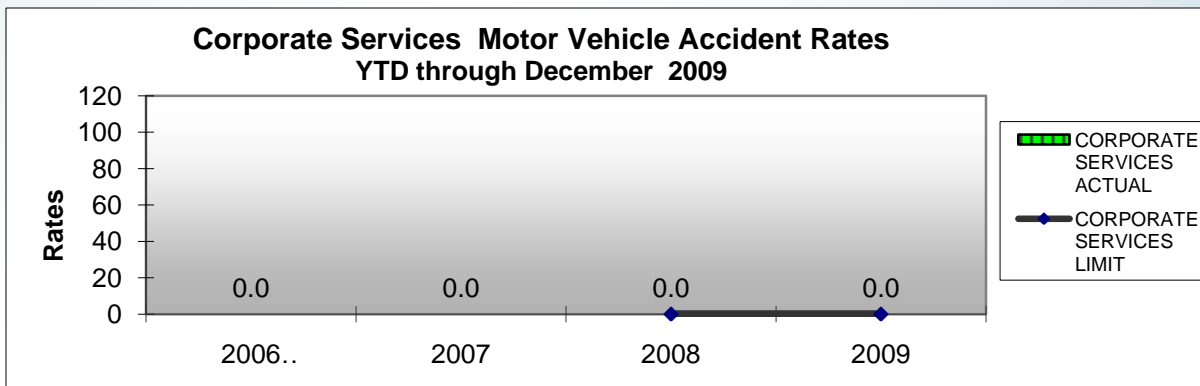
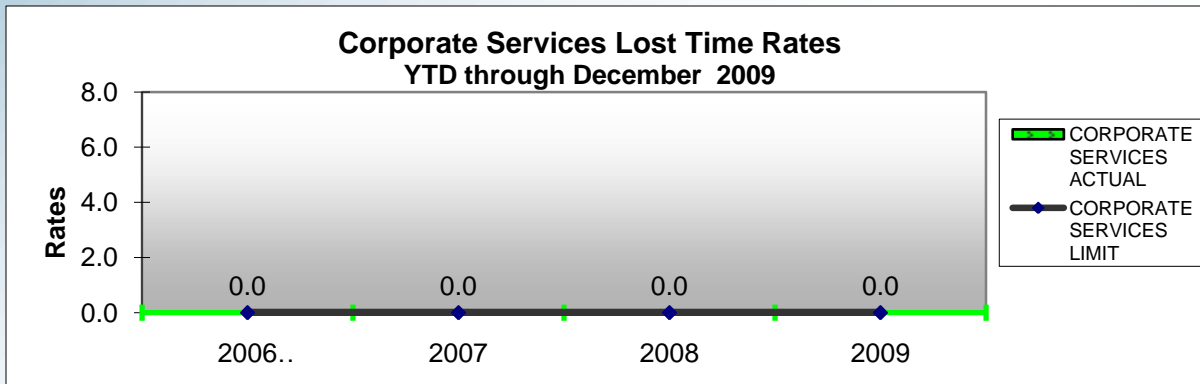
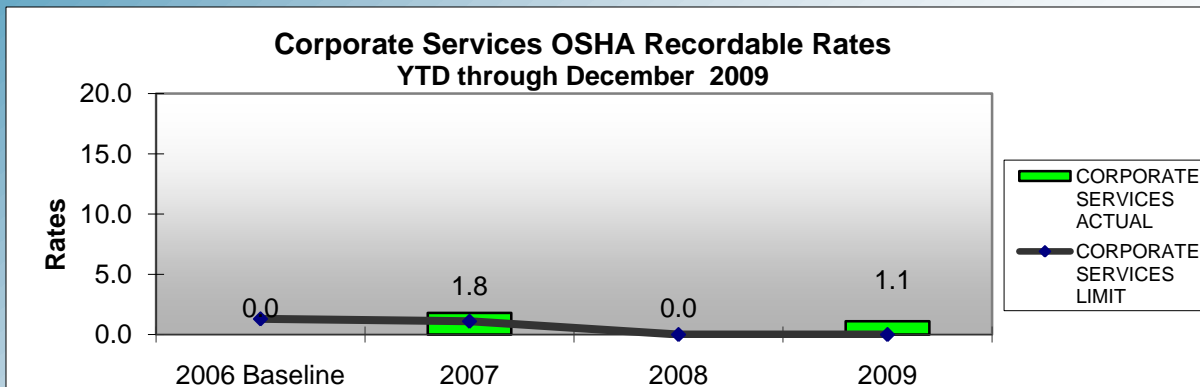
### Internal Services Lost Time Rates YTD through December 2009



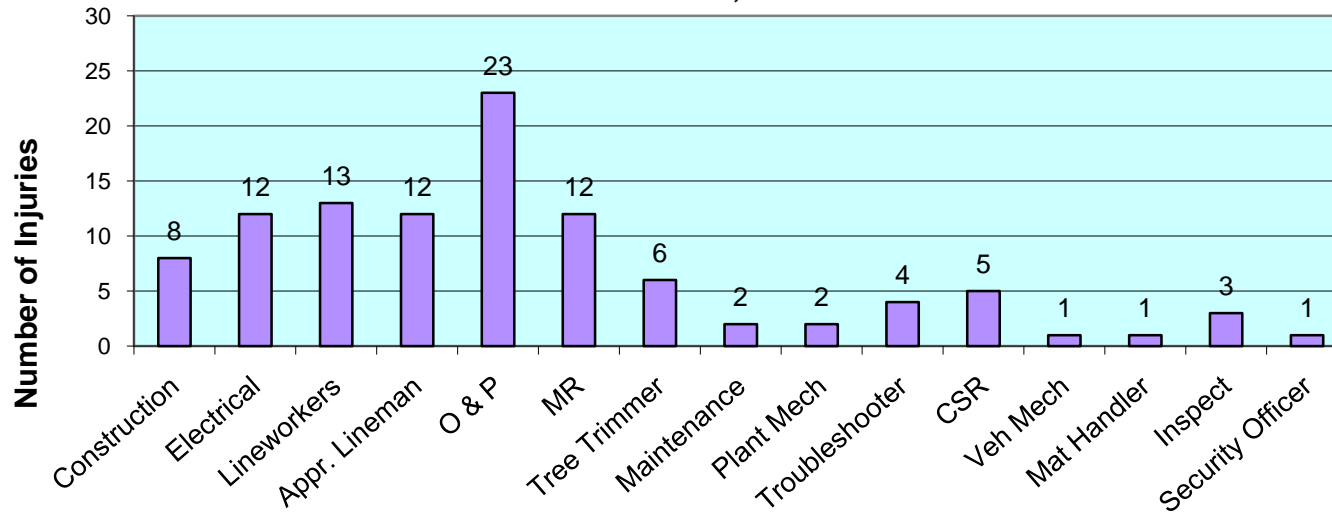
### Internal Services Motor Vehicle Accident Rates YTD through December 2009



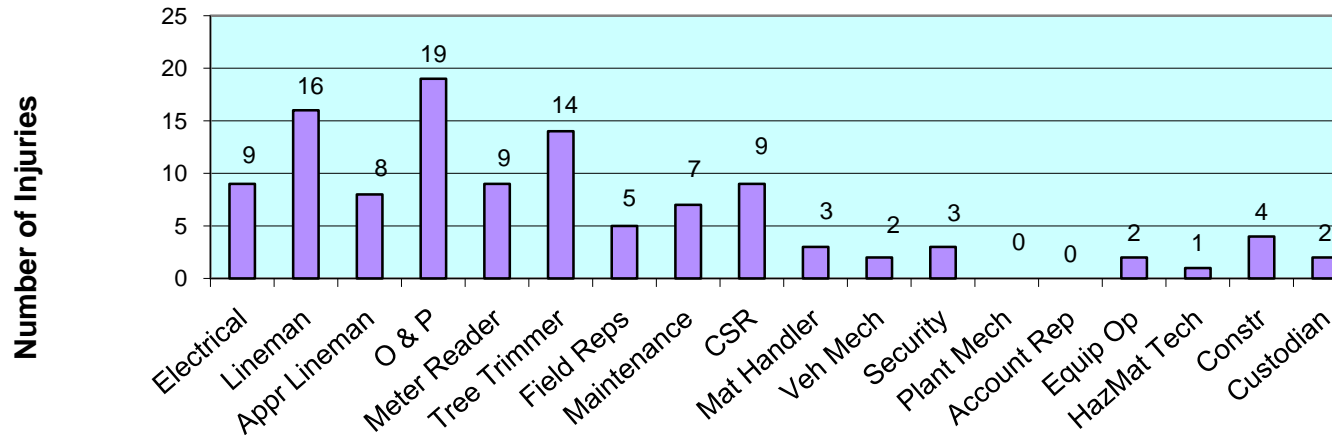


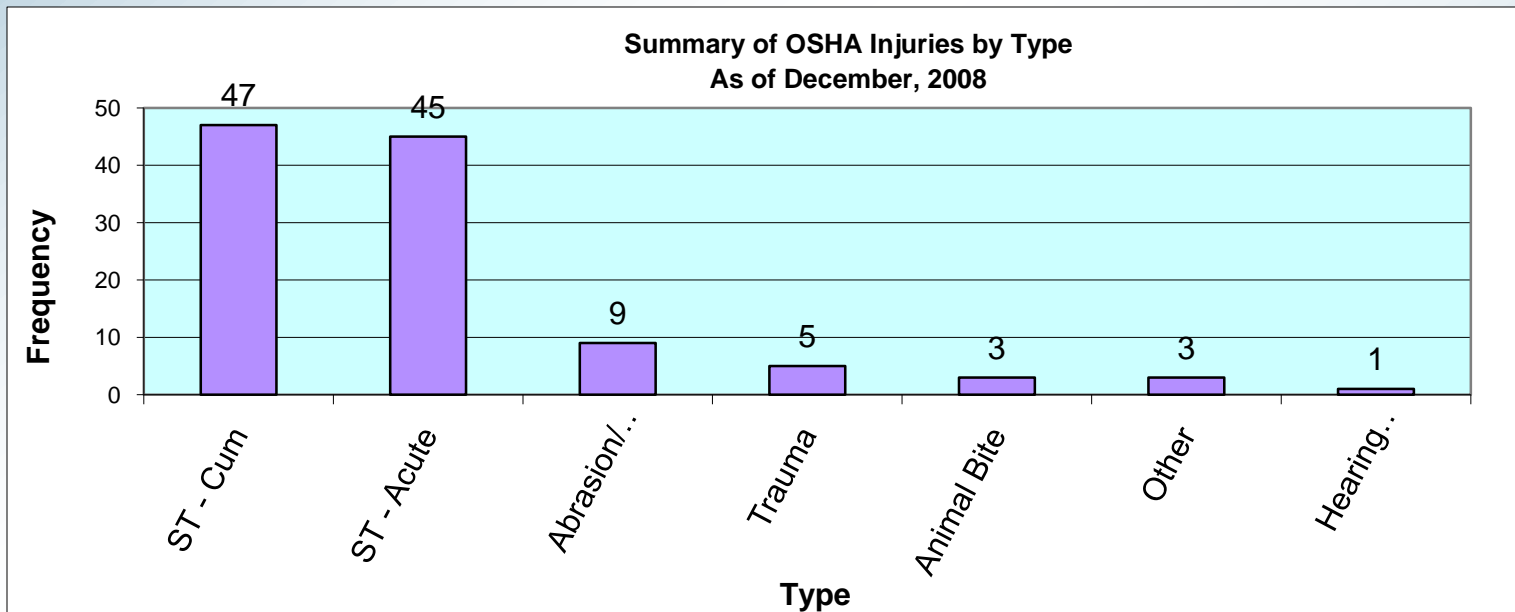
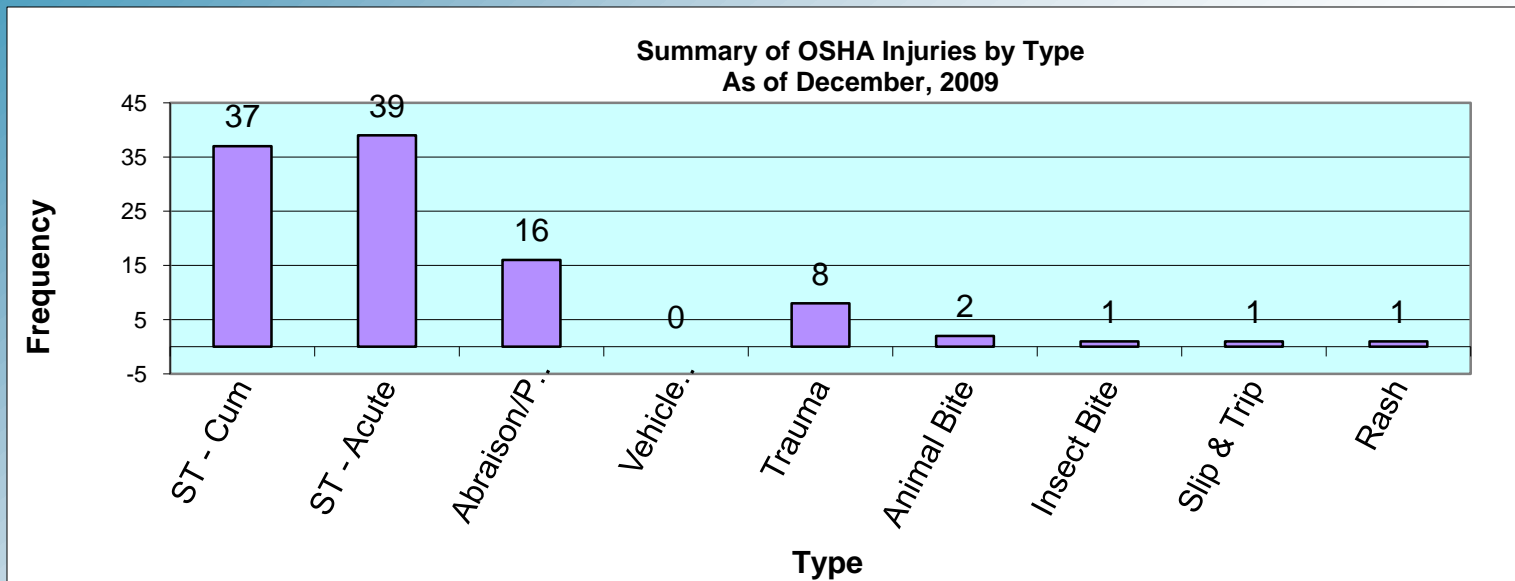


**Summary of Injuries by Job Classification  
As December, 2009**



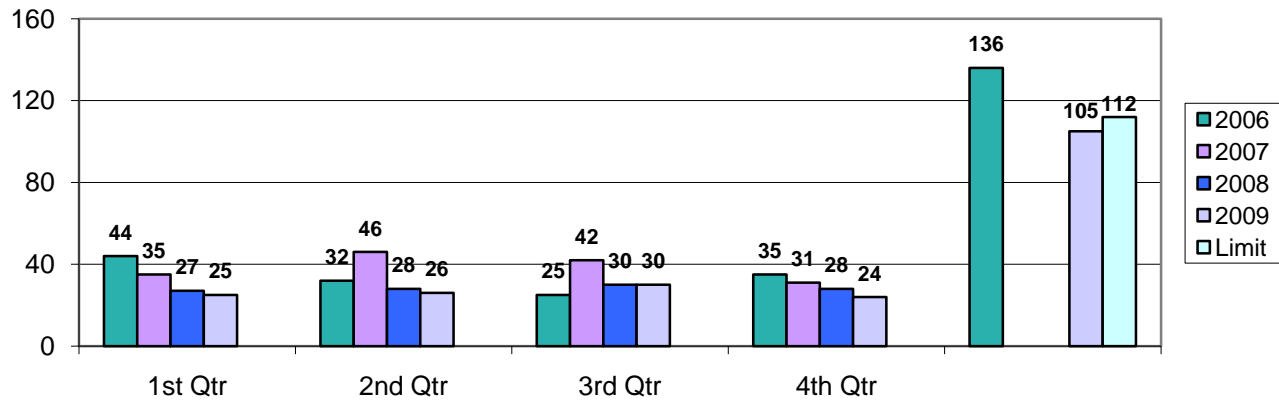
**Summary of OSHA Injuries by Job Classification  
As of December, 2008**



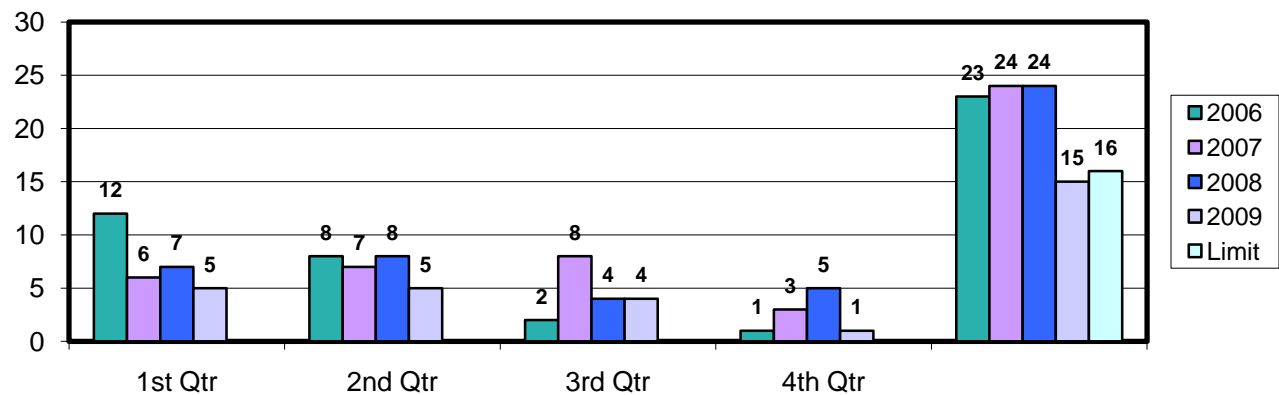




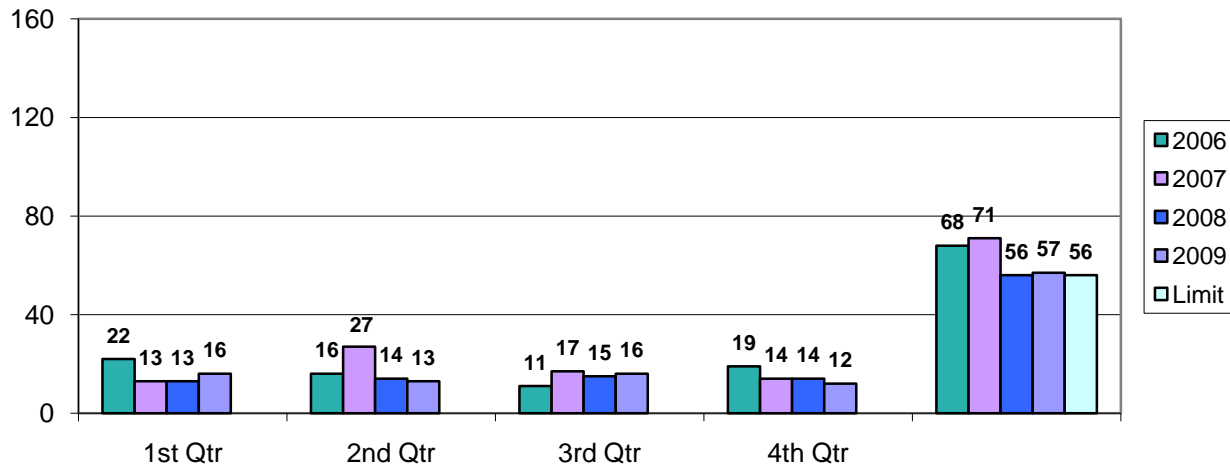
**Trend Chart - December, 2009  
District OSHA Count**



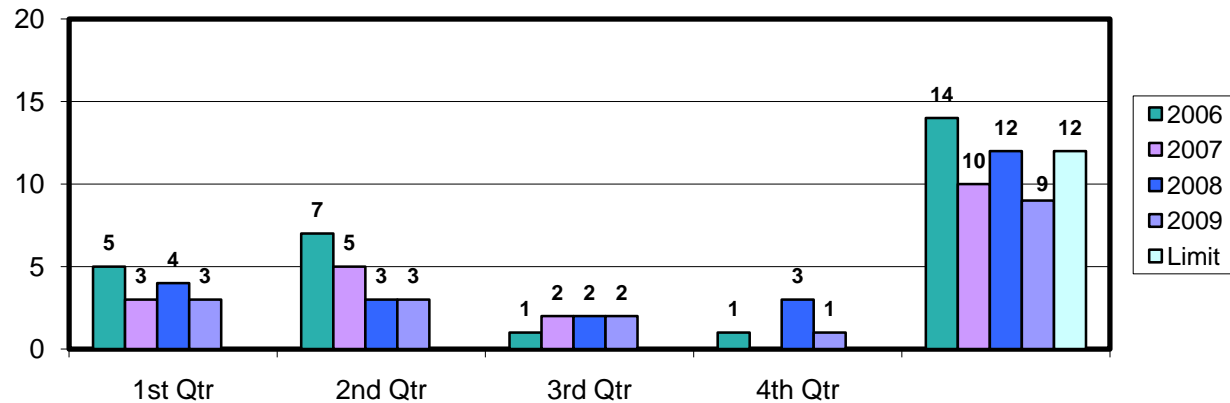
**Trend Chart - December, 2009  
District LTA Count**



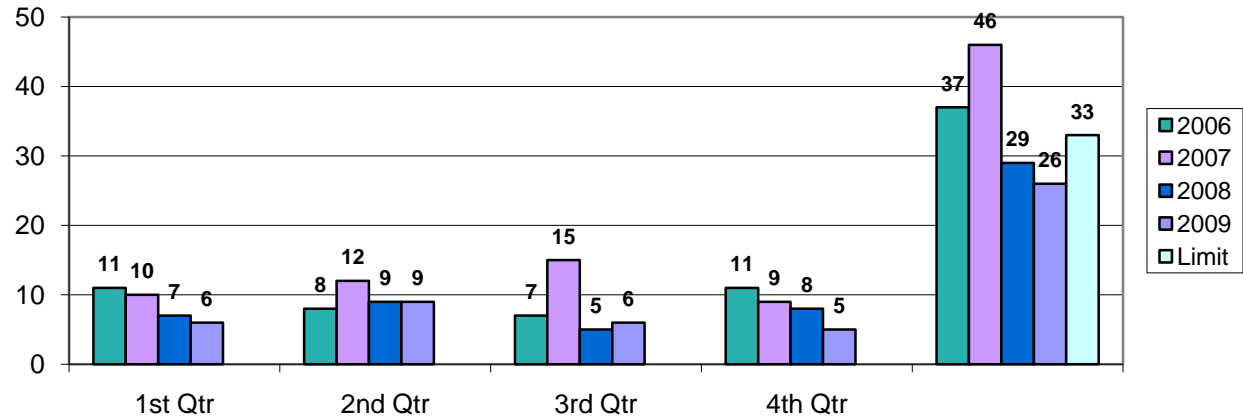
**Trend Chart - December, 2009**  
**Distribution Services OSHA Count**



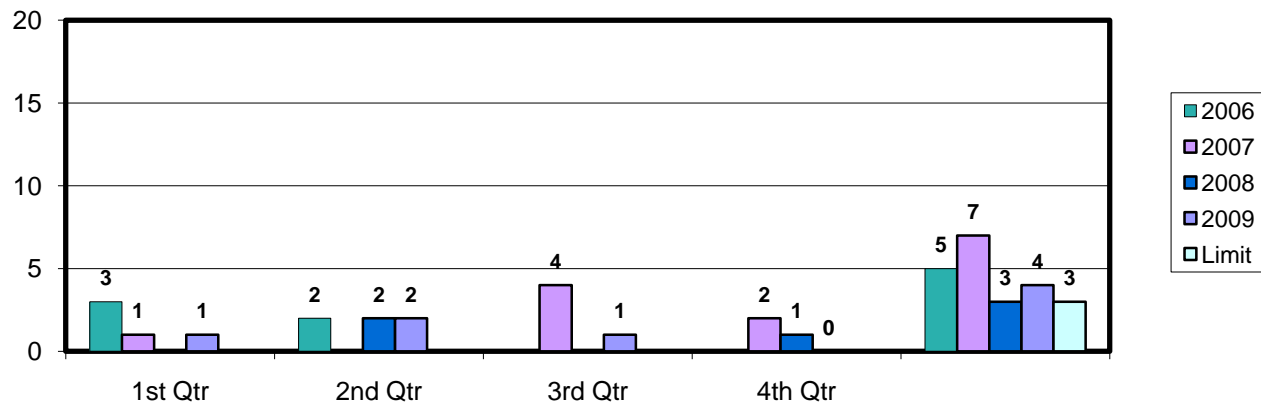
**Trend Chart - December, 2009**  
**Distribution Services LTA Count**



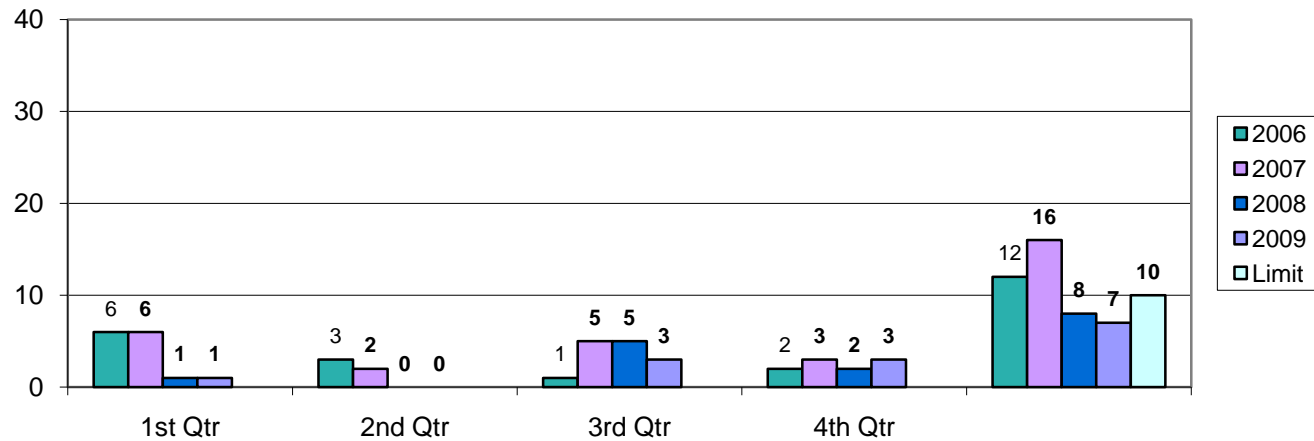
**Trend Chart - December, 2009  
Customer Services OSHA Count**



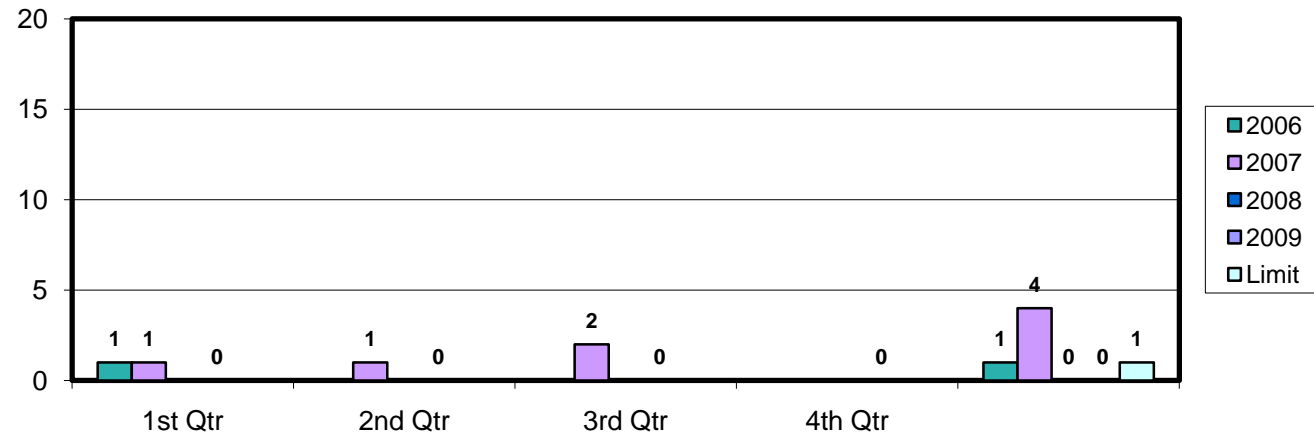
**Trend Chart - December, 2009  
Customer Services LTA Count**



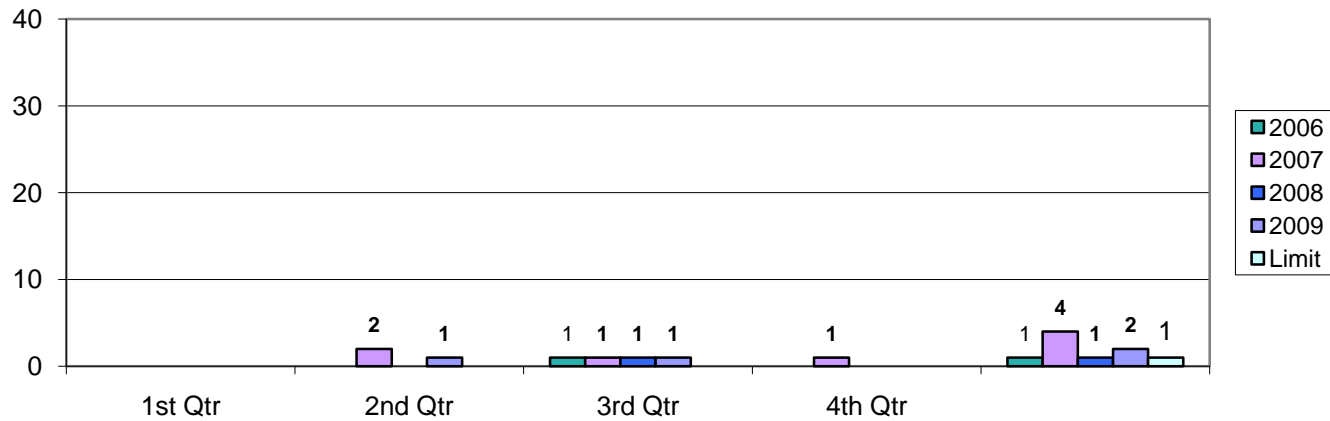
**Trend Chart - December, 2009  
Energy Supply OSHA Count**



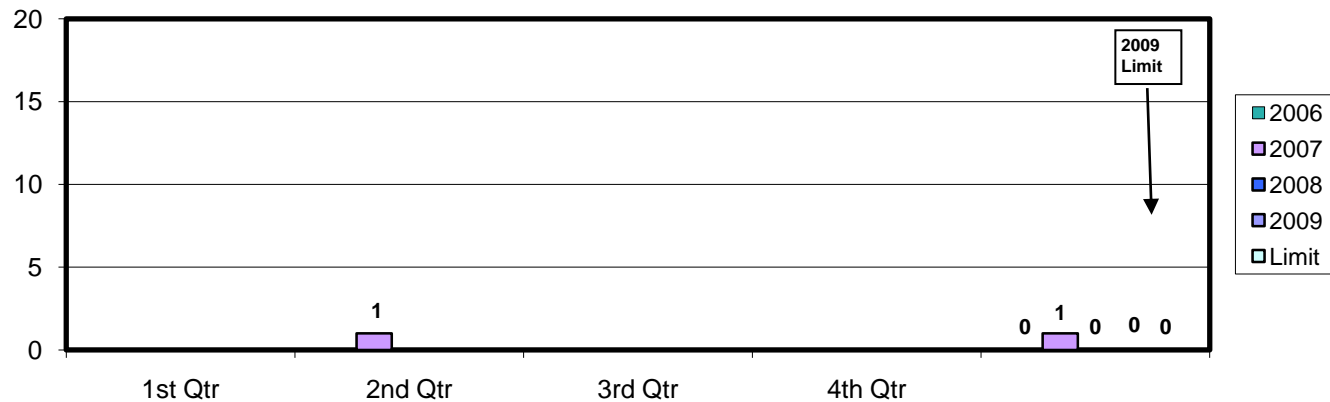
**Trend Chart - December, 2009  
Energy Supply LTA Count**



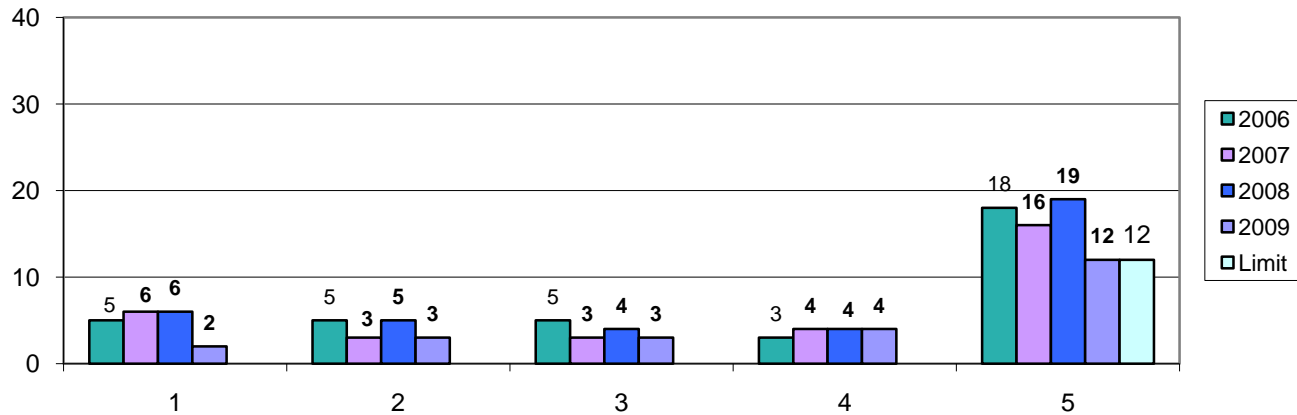
**Trend Chart - December, 2009  
Business Technology OSHA Count**



**Trend Chart - December, 2009  
Business Technology LTA Count**



**Trend Chart - December, 2009**  
**Internal Services OSHA Count**



**Trend Chart - December, 2009**  
**Internal Services LTA Count**

