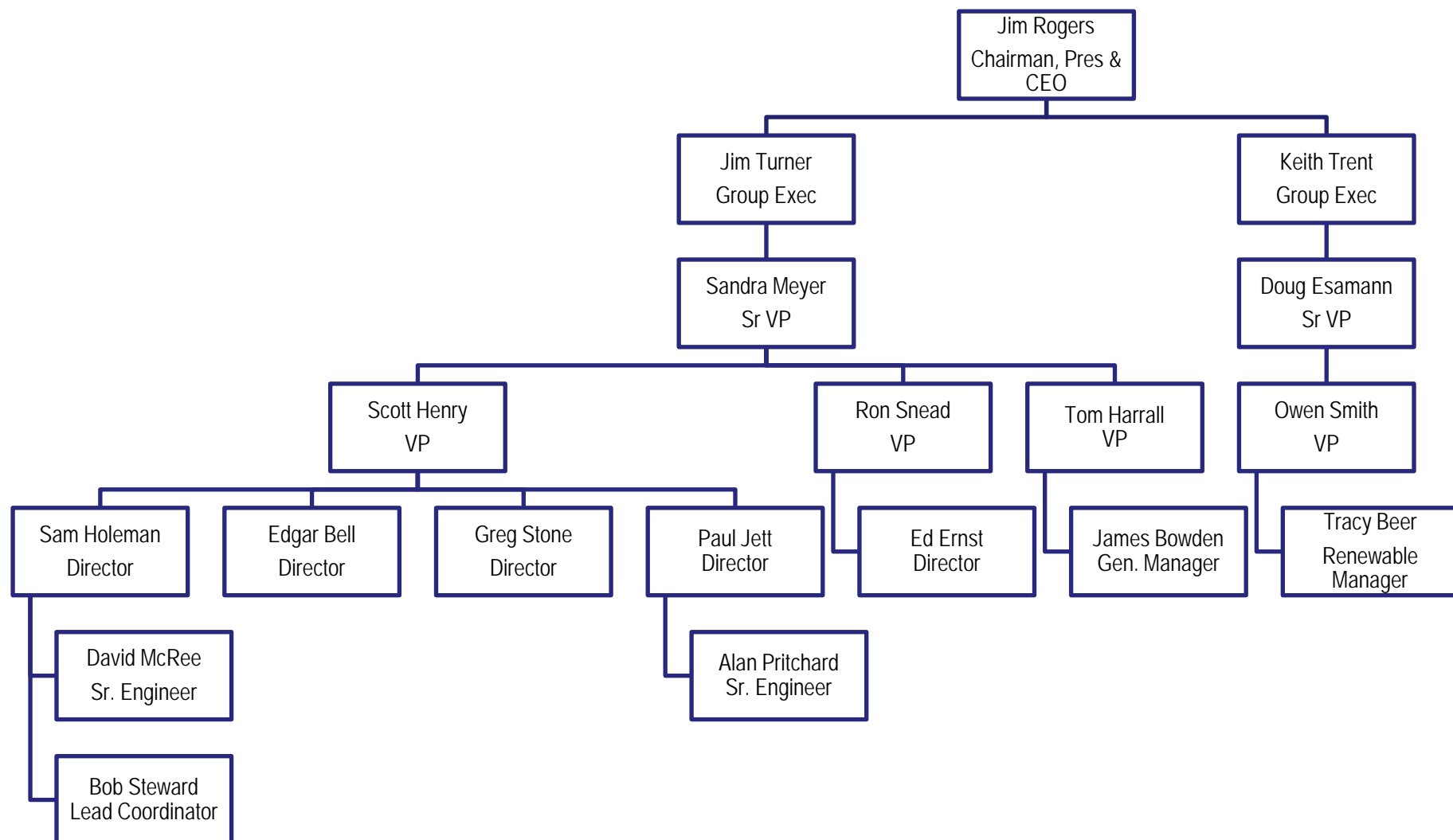




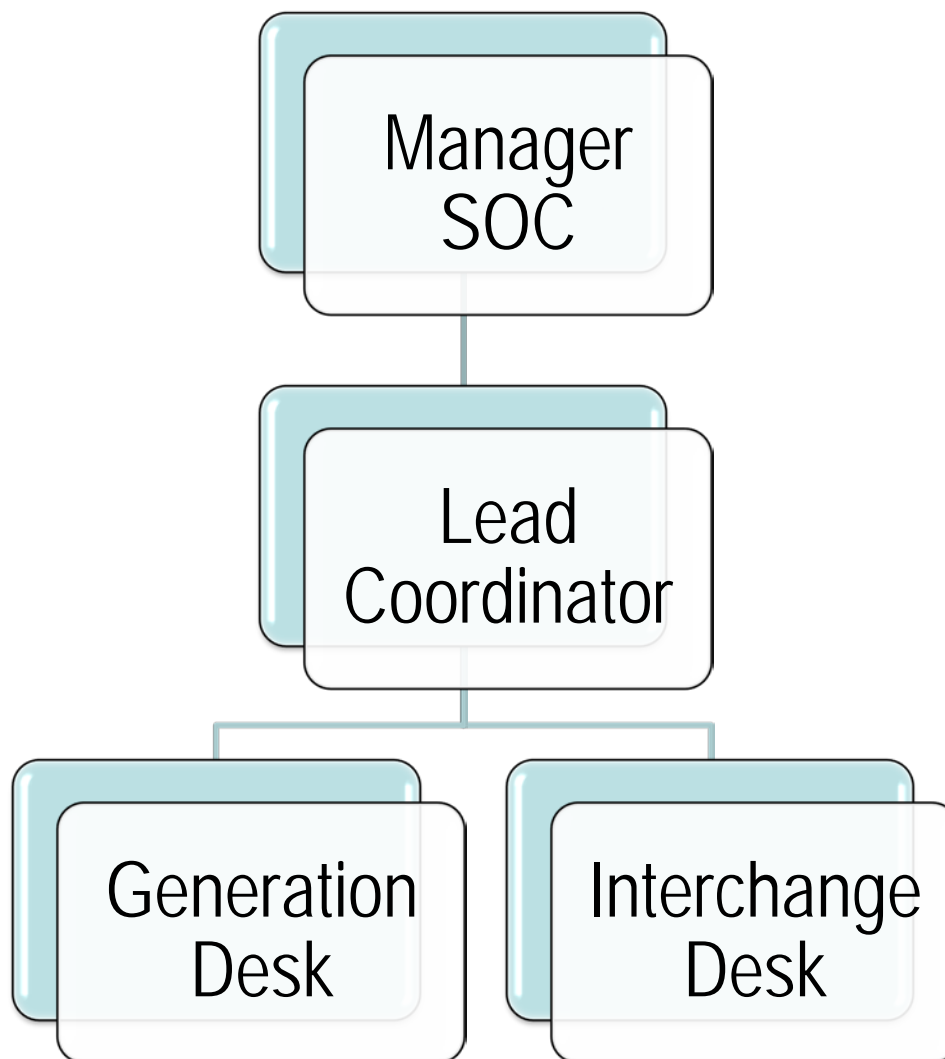
Duke Energy Carolinas

Reliability and Stability

Duke Energy Organization



System Operating Center Structure



Lead Coordinator

- Overall Shift Responsibility
- Perform VACAR South Reliability Function
- Review Generation Commitment
- Perform Reliability Contingency Analysis
- Assess Realtime Transmission Outages

Generation Dispatch

- Dispatch Units to meet load
- Responds to request from Generation Units
- Coordinate with Wholesale Marketer on Sales and Purchases
- Respond to Generation Emergencies

Interchange Desk

- Evaluates Transactions (Tags) for Schedule Implementation
- Confirms Schedules with neighboring Balancing Authorities
- Reviews, confirms, and corrects hourly readings to ensure accuracy of values before submitted to accounting systems

Procedures and Policies

- NERC Standards set the Procedures and Policies for the Group
- Procedures and Job Aids are maintained to help coordinators during abnormal system conditions when time allows
- Review the [Electric System Operations Sharepoint](#) for examples

Training

- Coordinators must receive approximately 200 hours of Continuing Education Units to maintain Certification in a three year window
 - Hours must be spent on Emergency Training, NERC Standards, Simulation, etc
- Duke sponsors Quarterly Training for Operators
 - Trainers are SMEs for the subject that is being presented
 - Computer Based Training is also made available for Generic System Operations
- There are four team members that determine the training topics for the quarter
- SERC also hosts a two and a half day System Operators Conference